

MENTAL DISORDERS AND FORENSIC PSYCHOLOGY





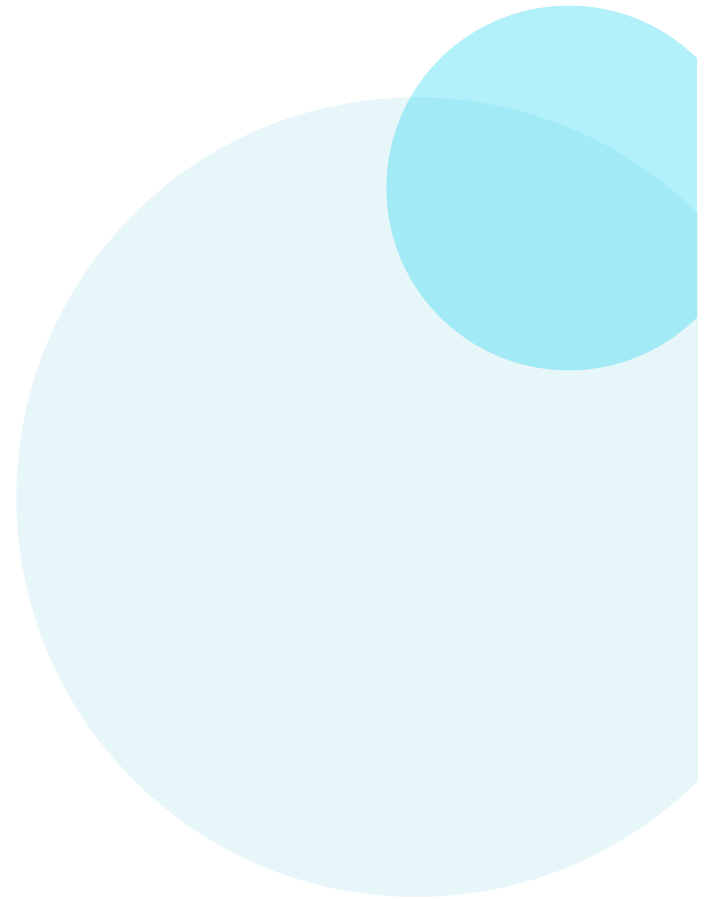
MENTAL DISORDERS AKA MENTAL ILLNESS

- A disorder of mind that interfere substantially with the person's ability to cope with life on a daily basis.
- Conditions that affect thinking, feeling, mood, and behaviour.
- May be occasional or long-lasting (chronic).
- Deprives a person from freedom of choice.
- It is manifested in behaviour and deviates from normal conduct.



Some common examples :

- Anxiety disorders, including panic disorder, obsessive-compulsive disorder, and phobias
- Depression, bipolar disorder, and other mood disorders
- Eating disorders
- Personality disorders
- Post-traumatic stress disorder
- Psychotic disorders, including schizophrenia



“

Legal Definition of *mental disease*

an abnormal mental condition that interferes with mental or emotional processes and internal behavioural control and that is not manifest only in repeated criminal or antisocial conduct





What causes mental disorders?

- Your genes and family history
- Your life experiences, such as stress or a history of abuse, especially if they happen in childhood
- Biological factors such as chemical imbalances in the brain
- A traumatic brain injury
- A mother's exposure to viruses or toxic chemicals while pregnant
- Use of alcohol or recreational drugs
- Having a serious medical condition like cancer
- Having few friends, and feeling lonely or isolated





How are mental disorders diagnosed?

- A medical history
- A physical exam and possibly lab tests
- A Psychological evaluation: One answer questions about their thinking, feelings, and behaviours.



1

MENTAL DISORDERS CLASSIFICATION

ICD : published by WHO

Consist of clinically recognisable set of symptoms or behaviours associated in most cases with distress and with interference with personal functions."

DSM : published by the American Psychiatric Association





ICD : Chapter V focuses on "mental and behavioural disorders" and consists of 10 main groups:

F0: Organic, including symptomatic, mental disorders

F1: Mental and behavioural disorders due to use of psychoactive substances

F2: Schizophrenia, schizotypal and delusional disorders

F3: Mood [affective] disorders

F4: Neurotic, stress-related and somatoform disorders

F5: Behavioural syndromes associated with physiological disturbances and physical factors

F6: Disorders of personality and behaviour in adult persons

F7: Mental retardation

F8: Disorders of psychological development

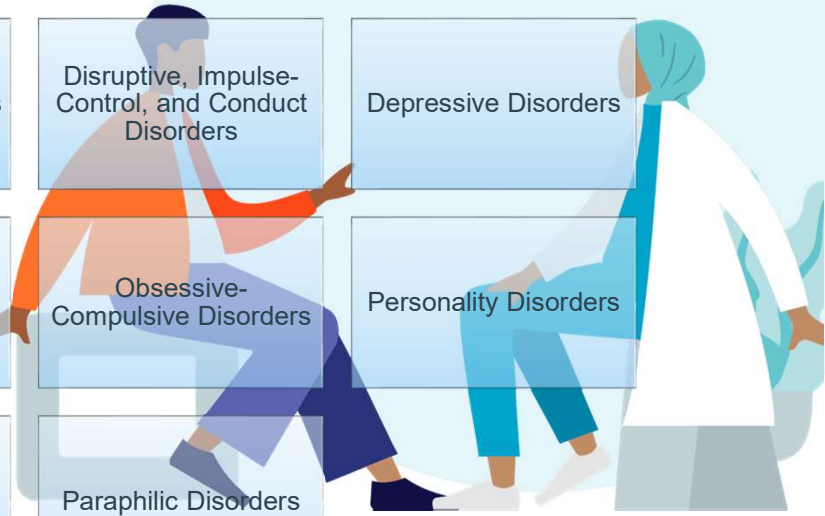
F9: Behavioural and emotional disorders with onset usually occurring in childhood and adolescence





DSM - 5

Neurodevelopmental Disorders	Bipolar and Related Disorders	Anxiety Disorders	Trauma- and Stressor-Related Disorders	Dissociative Disorders
Somatic Symptom and Related Disorders	Feeding and Eating Disorders	Sleep-Wake Disorders	Disruptive, Impulse-Control, and Conduct Disorders	Depressive Disorders
Substance-Related and Addictive Disorders	Neurocognitive Disorders	Schizophrenia Spectrum and Other Psychotic Disorders	Obsessive-Compulsive Disorders	Personality Disorders
	Sexual Dysfunctions	Gender Dysphoria	Paraphilic Disorders	



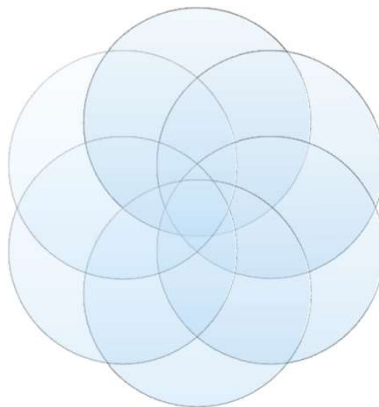


Neurodevelopmental Disorders

Developmental disorders.

May be more severe and affected children may require more support.

May be mild and easily manageable with behavioural and educational interventions,



Involve dysfunction in attention, memory, perception, language, problem-solving, or social interaction.

Neurologically based conditions

Interfere with the acquisition, retention, or application of specific skills or sets of information.



Includes :

Intellectual Disability :

- Originates prior to the age of 18 and is characterized by limitations in both intellectual functioning and adaptive behaviors.
- IQ: <70

Global Developmental Delay

- Children who are under the age of five.
- Delays relate to cognition, social functioning, speech, language and motor skills.

Communication Disorders :

- Impact the ability to use, understand, or detect language and speech
- Language disorder, speech sound disorder, childhood onset fluency disorder (stuttering), and social (pragmatic) communication disorder.



Includes :

Autism Spectrum Disorder :

- Persistent deficits in social interaction and communication in multiple life areas.
- Includes limited and repetitive patterns of behaviour.

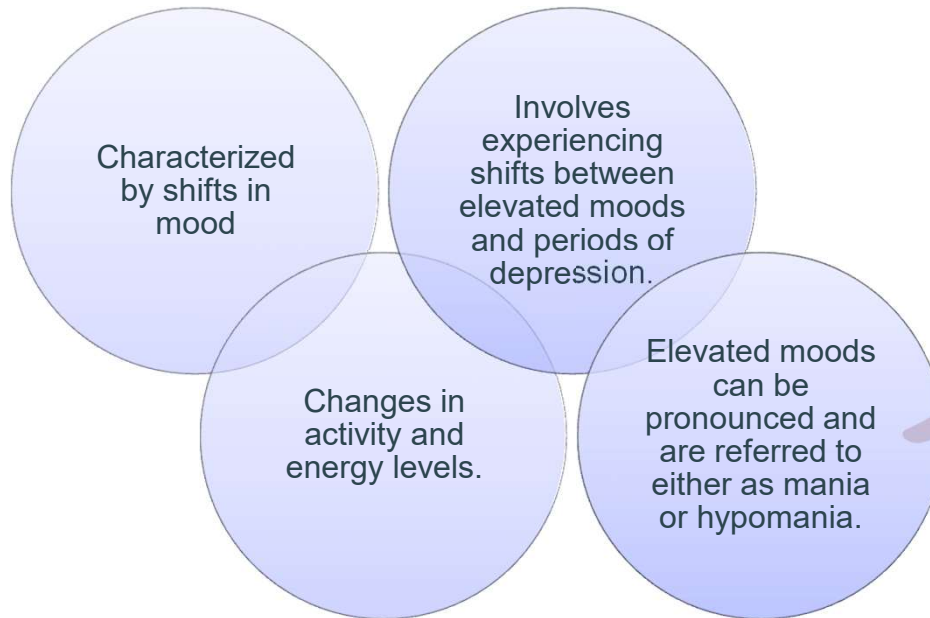
Attention-Deficit Hyperactivity Disorder (ADHD)

- Persistent pattern of hyperactivity-impulsivity and/or inattention.
- Interferes with functioning and presents itself in two or more settings such as at home, work, school, and social situations.
- DSM-5 specifies that several of the symptoms must have been present prior to the age of 12.





Bipolar and Related Disorders



Includes

	Mania
	Causes a person to experience unreasonable euphoria, very intense moods, hyperactivity, and delusions.
	Periods of mania are sometimes marked by feelings of distraction, irritability, and excessive confidence.
	People experiencing mania are also more prone to engage in activities that might have negative long-term consequences such as gambling and shopping sprees.



Includes

Depressive Episodes
Characterized by feelings of a depressed or sad mood along with a lack of interest in activities.
During a depressive period, people with bipolar disorder may lose interest in activities that they previously enjoyed, experience sleeping difficulties, and even have thoughts of suicide.
May also involve feelings of guilt, fatigue, and irritability





Anxiety Disorders





Includes:

Generalized Anxiety Disorder (GAD)

- Marked by excessive worry about everyday events that it interferes with a person's well-being and functioning.

Social Anxiety Disorder

- Irrational fear of being watched or judged.

Phobias

- Specific phobias involve natural events, medical, animals and situational.
- May experience nausea, trembling, rapid heart rate, and even a fear of dying.

Separation Anxiety Disorder

- Excessive amount of fear or anxiety related to being separated from attachment figures.

Panic disorder : intense, recurrent, and unexpected

