

COPOLYMERIZATION

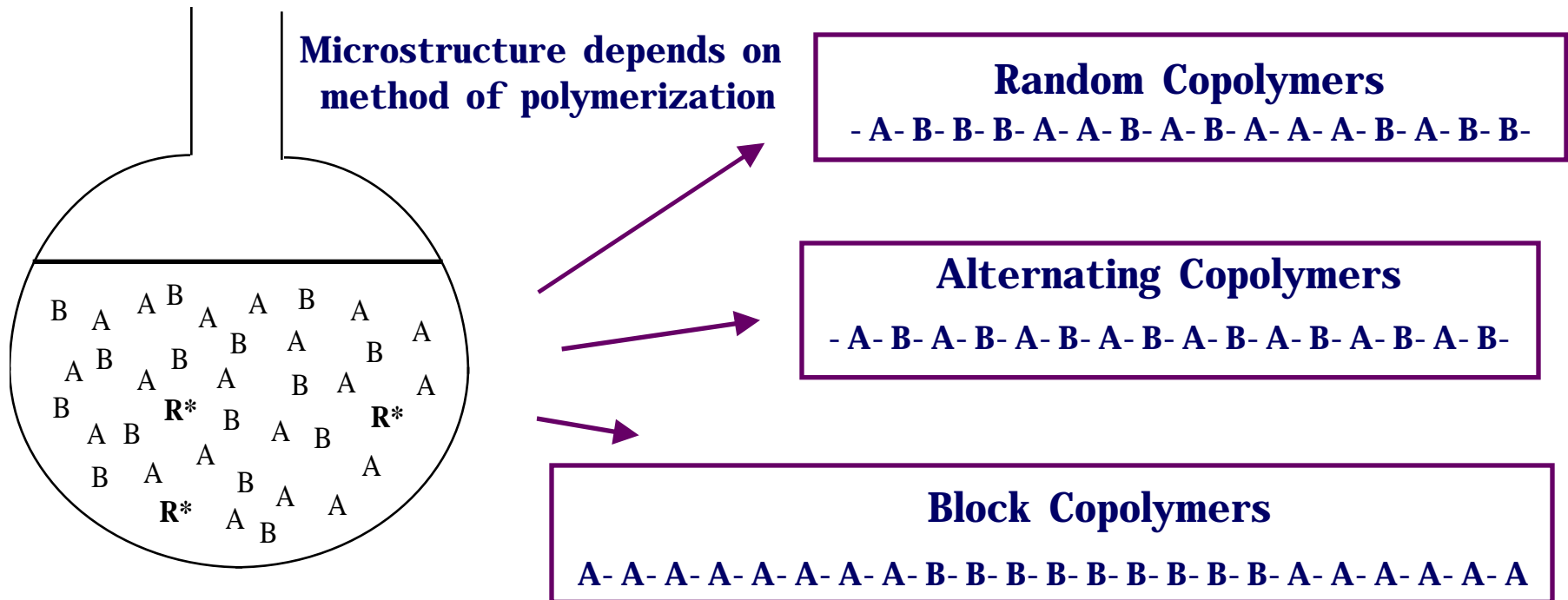
POLYMERIZATION OF TWO OR MORE MONOMERS

Examples:

Poly(ethylene- co- propylene) (EP)

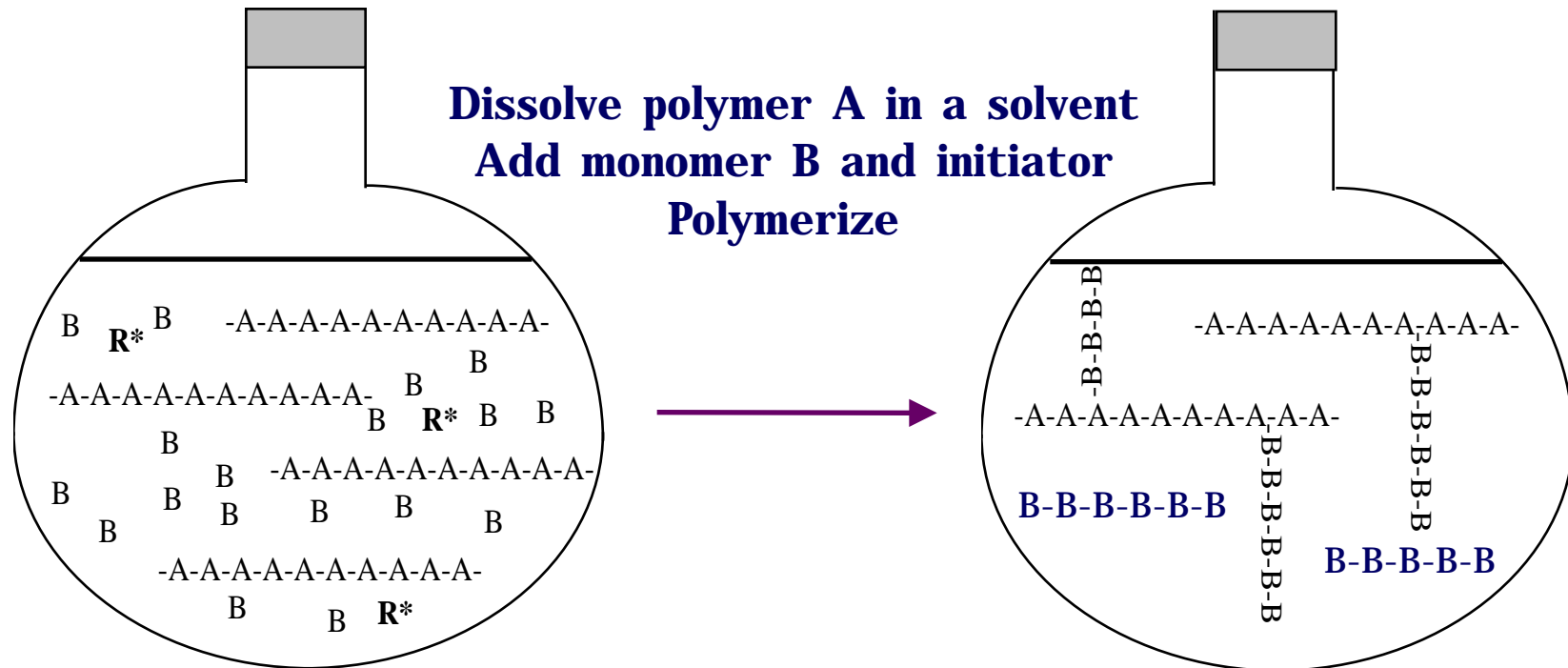
Poly(styrene- co- butadiene) (SBR)

Poly(vinylidene chloride- co- vinyl chloride) (Saran[®])



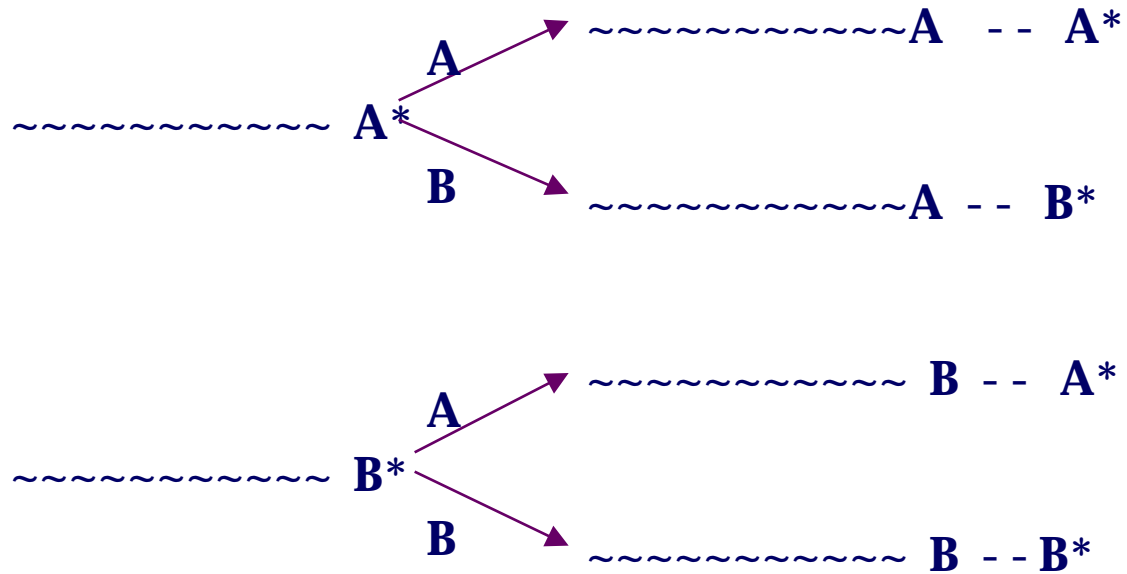
POST POLYMERIZATION OR HOW TO MAKE A GRAFT COPOLYMER

Examples:
High Impact Polystyrene (HIPS)
Acrylonitrile / Butadiene / Styrene (ABS)



FREE RADICAL COPOLYMERIZATION

ARE "RANDOM" COPOLYMERS REALLY RANDOM ?



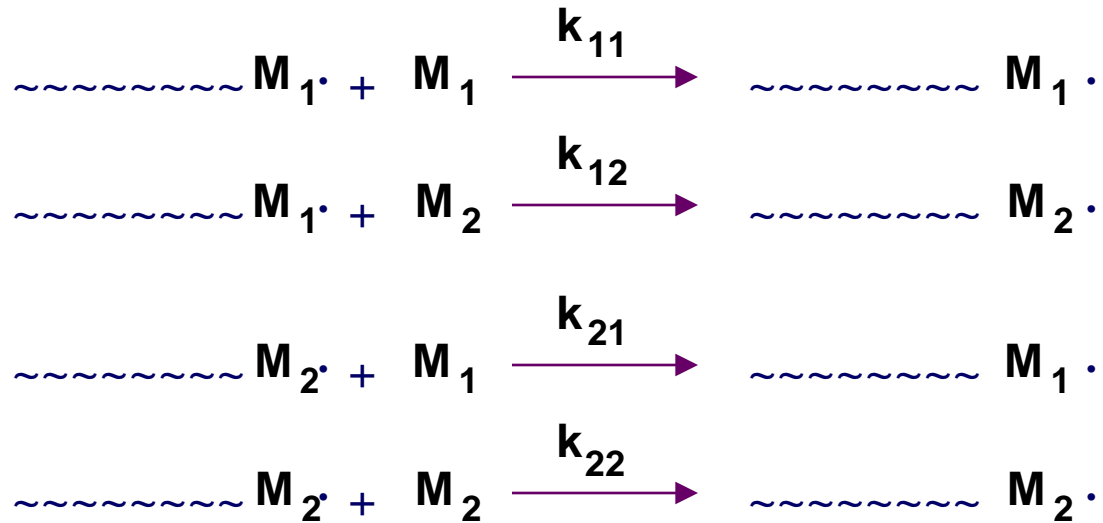
DO A's ADD TO A's AS EASILY AS B's ADD TO A's ?
(and vice - versa)

POSSIBLE PRODUCTS

COPOLYMERIZATION OF MONOMERS M_1 AND M_2

- Homopolymers
- Alternating copolymers
- "Ideal" or truly random copolymers
- Non ideal copolymers -
tendency to "blockiness"
or alternating

KINETICS OF COPOLYMERIZATION



TENDENCIES

1. BLOCKS AND / OR HOMOPOLYMER

IF $k_{11} > k_{12}$ AND $k_{22} > k_{21}$

2. ALTERNATING IF $k_{12} > k_{11}$ AND $k_{21} > k_{22}$

3. RANDOM COPOLYMERS IF $k_{11} = k_{12}$
AND $k_{22} = k_{21}$

REACTIVITY RATIOS

DEFINE

$$r_1 = \frac{k_{11}}{k_{12}}$$

$$r_2 = \frac{k_{22}}{k_{21}}$$

WHAT IF

$$r_1, r_2 \gg 1 ?$$

$$r_1, r_2 \ll 1 ?$$

$$r_1 = r_2 = 1 ?$$

$$r_1 r_2 = 1 ?$$

KINETICS OF COPOLYMERIZATION

$$- \frac{d[M_1]}{dt} = k_{11} [M_1 \cdot][M_1] + k_{21} [M_2 \cdot][M_1]$$

$$- \frac{d[M_2]}{dt} = k_{22} [M_2 \cdot][M_2] + k_{12} [M_1 \cdot][M_2]$$

Divide and eliminate $[M \cdot]$ terms using
STEADY STATE ASSUMPTION

- $M_1 \cdot$ & $M_2 \cdot$ generated and consumed
at equal rates. we only need focus on one
type of radical; e.g. $M_1 \cdot$

$$k_{12} [M_1 \cdot][M_2] = k_{21} [M_2 \cdot][M_1]$$

COPOLYMER EQUATION

$$\frac{d[M_1]}{d[M_2]} = \frac{[M_1]}{[M_2]} \left\{ \frac{r_1[M_1] + [M_2]}{[M_1] + r_2[M_2]} \right\}$$

or

$$\frac{d[M_1]}{d[M_2]} = \frac{(r_1[M_1]/[M_2]+1)}{(r_2[M_2]/[M_1]+1)}$$

remember

$$r_1 = \frac{k_{11}}{k_{12}} \quad r_2 = \frac{k_{22}}{k_{21}}$$

COPOLYMER EQUATION

It is often more convenient to work in terms of mole fractions.

define :

F_1 = mole fraction of monomer 1 in the polymer at some instant of time

f_1 = mole fraction of monomer 1 in the feed at the same instant of time

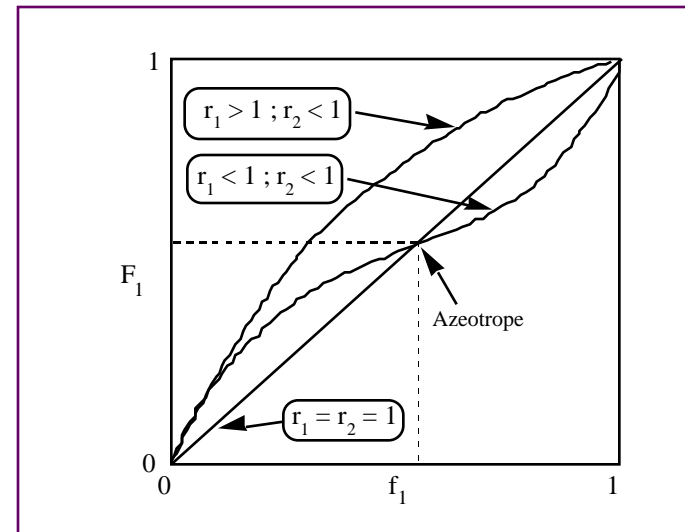
$$F_1 = 1 - F_2 = \frac{d[M_1]}{d[M_1] + d[M_2]}$$

$$f_1 = 1 - f_2 = \frac{[M_1]}{[M_1] + [M_2]}$$

COPOLYMER EQUATION

$$F_1 = \frac{(r_1 - 1) f_1 + f_1^2}{(r_1 + r_2 - 2) f_1^2 + 2(1 - r_2) f_1 + r_2}$$

Note that this equation describes the instantaneous copolymer composition



In a batch copolymerization composition will "drift" with conversion. To treat this properly we need to first do some statistics, but here we will just give a couple of illustrations

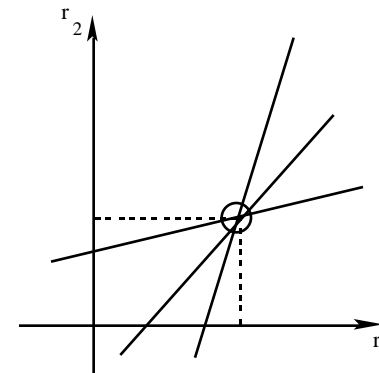
DETERMINATION OF REACTIVITY RATIOS

There are some older methods based on rearrangements of the copolymer equation

LET $\frac{[M_1]}{[M_2]} = x$ and $\frac{d[M_1]}{d[M_2]} = y$

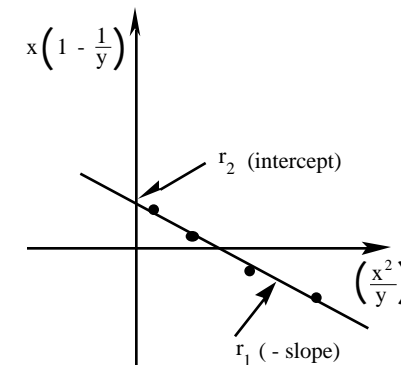
THEN $y = \frac{1 + r_1 x}{1 + \frac{r_2}{x}}$

$$r_2 = \frac{x(r_1 x + 1)}{y} - x$$



MAYO - LEWIS PLOT

$$x \left(1 - \frac{1}{y} \right) = r_1 \left(\frac{x^2}{y} \right) - r_2$$



FINEMAN - ROSS PLOT

DETERMINATION OF REACTIVITY RATIOS

ALSO;

KELEN TUDOS PLOT

Q - e SCHEME

**APPLICATION OF PROBABILITY
THEORY AND nmr SPECTROSCOPY**

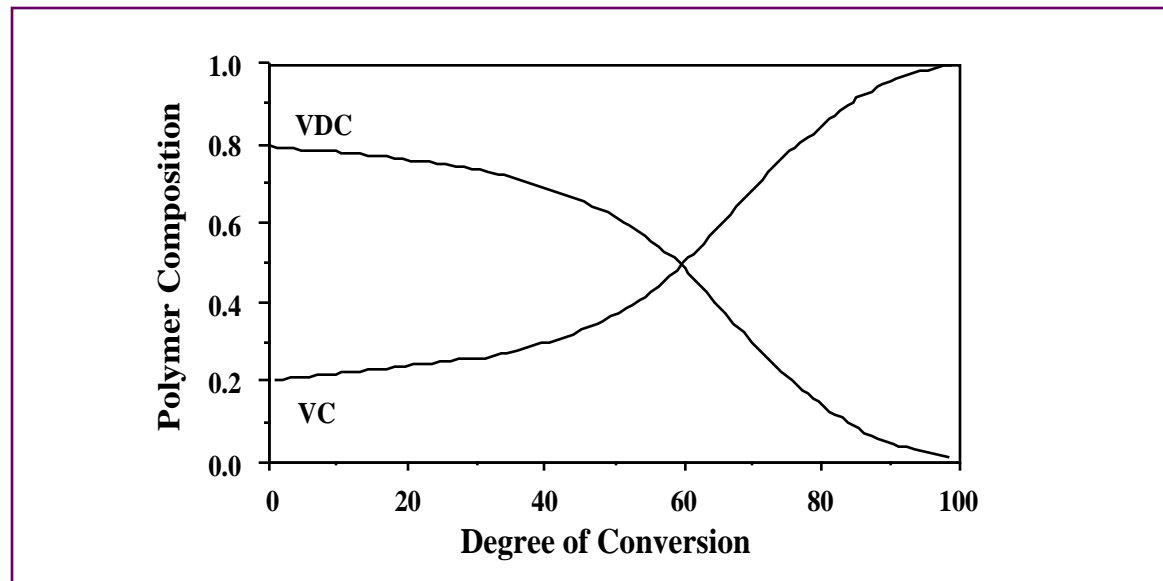
POLYMER SYNTHESIS—COPOLYMERIZATION

THE COPOLYMER EQUATION

$$y = \frac{1 + r_A x}{1 + \frac{r_B}{x}}$$

$x = \text{Composition of the Feed} = \frac{[A]}{[B]}$
 $y = \text{Composition of the Instantaneously Formed Polymer} = \frac{P_1[A]}{P_1[B]}$

Copolymer Composition as a Function of Conversion



Compositional variation for vinylidene chloride/vinyl chloride copolymers.