

Sustainable Assessment

Dr. Pratap Chhotaray

Sustainable Assessment

- A sustainability assessment can be defined as the process of identifying, measuring, and evaluating the potential impacts of alternatives for sustainability

- SA: A complex appraisal mechanism

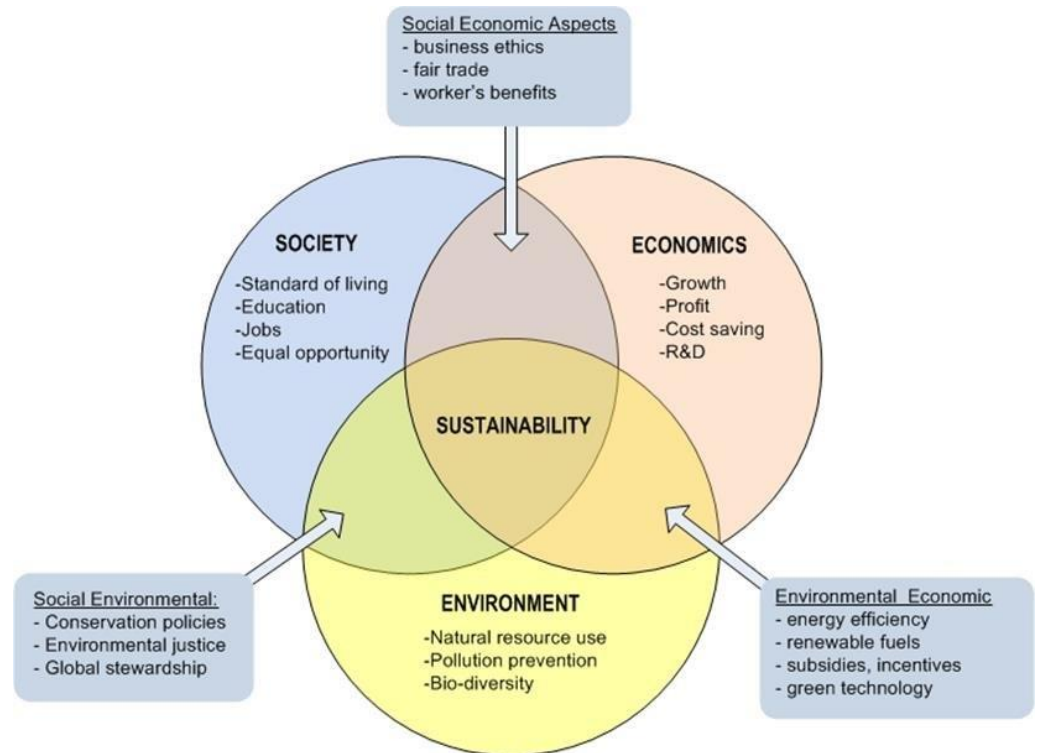
- Has multidisciplinary aspects

a) Environmental

b) Economic

c) Social

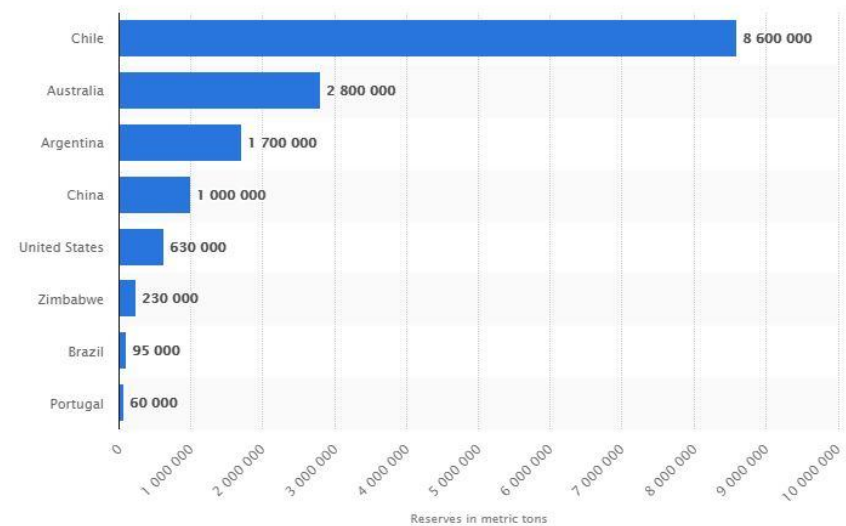
- SA also has cultural element



Need of Sustainable Assessment

Objective of SA: To meet the need of present generation without compromising the ability of future generations to meet their own needs

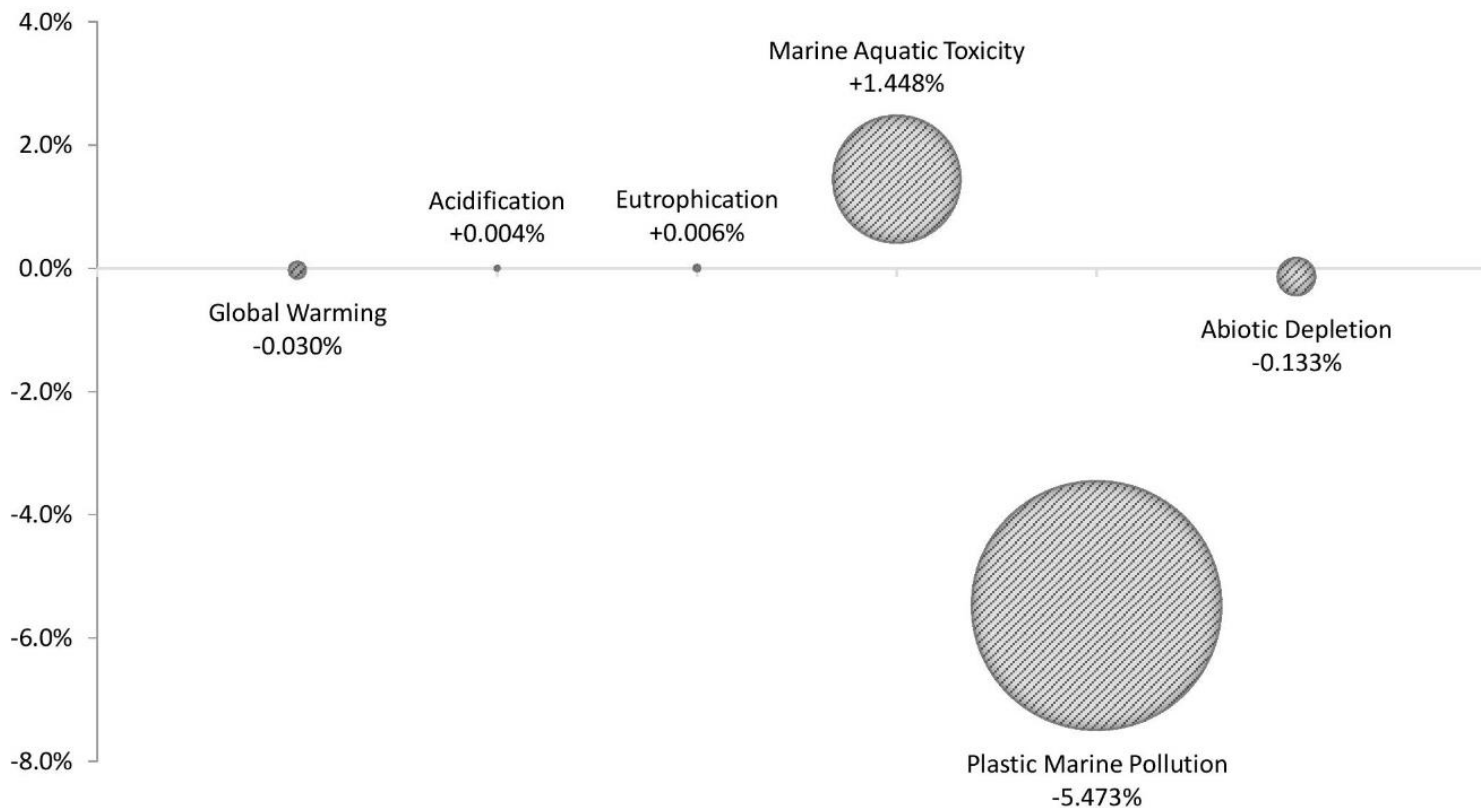
- SA helps policy maker to decide what they should and shouldn't do in order to make society more sustainable
- It helps to plan the activities for optimal contribution to sustainable development



Worldwide Lithium reserve as of 2022

Sustainable Assessment

- SA evaluation requires integrating sustainability principles, thresholds, and targets
- Approach SA as trans-disciplinary



Impacts of a single-use plastics ban in the EU. Percentages show the increase or decrease of annual emissions for the six assessed impact categories in relation to total emissions in the EU

Challenges in Sustainable Assessment

- No clear distinction between scientific evaluation and policy making on SA
- In a trans-disciplinary setup it is difficult to predict the option on which sustainable development would proceed

- In science-policy interface, sometimes it is difficult to project the direction particularly when conflicting objectives are involved
- Fully understanding of this complex dynamics is required for successful implementation of SA

Sustainability Assessment Procedure

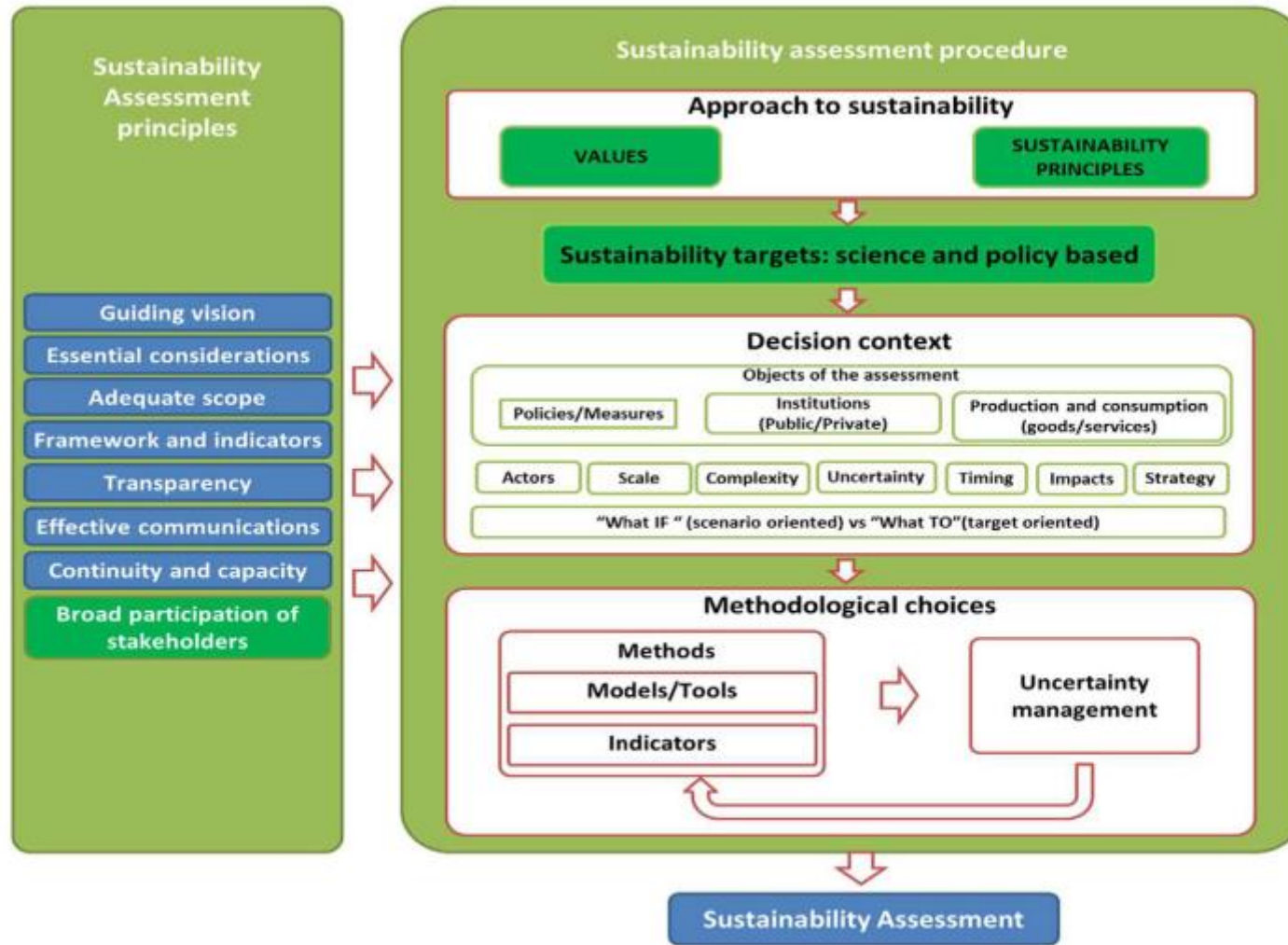
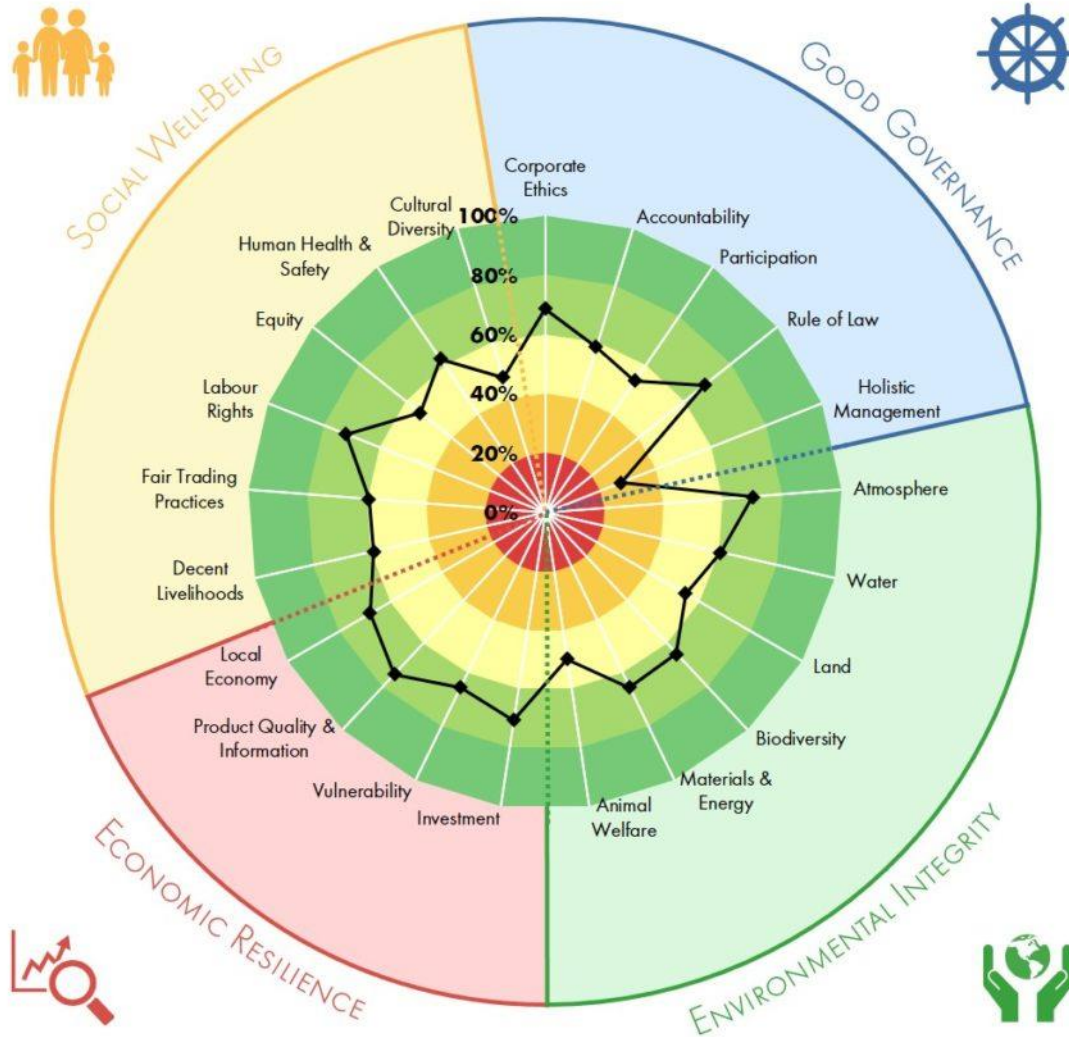


Fig. 1. Schematic representation of the conceptual framework for sustainability assessment. Key elements, which distinguish sustainability assessment from integrated assessment, are reported in dark green colour.

Sustainability Assessment



THANK YOU

Any Queries ??...

THANK YOU