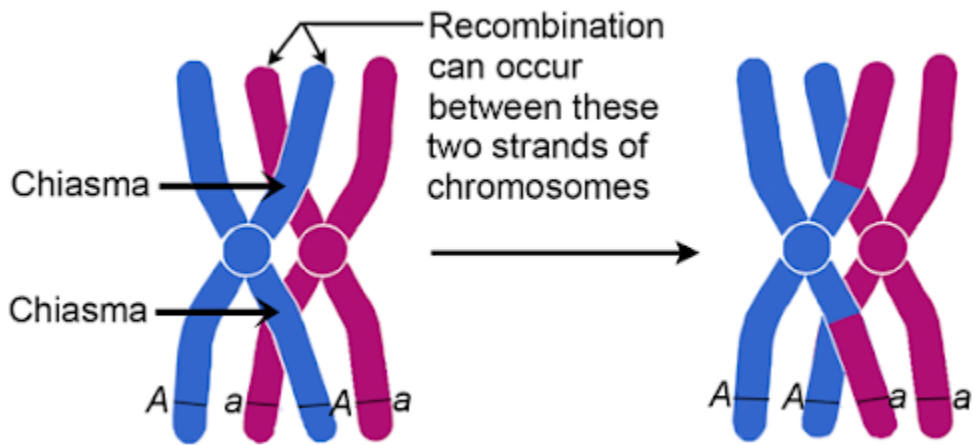


Bivalents



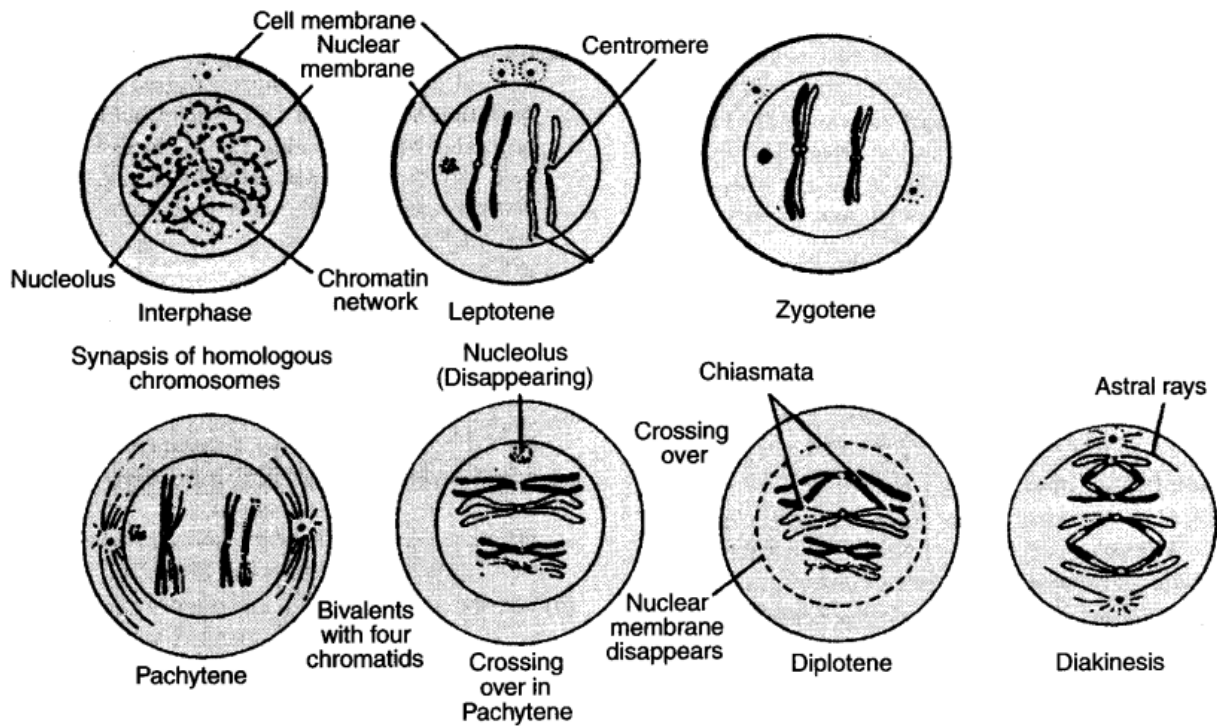


Fig. : Prophase I of meiosis I

Meiosis: Selected Phases



(2) Prophase I



(3) Late prophase I

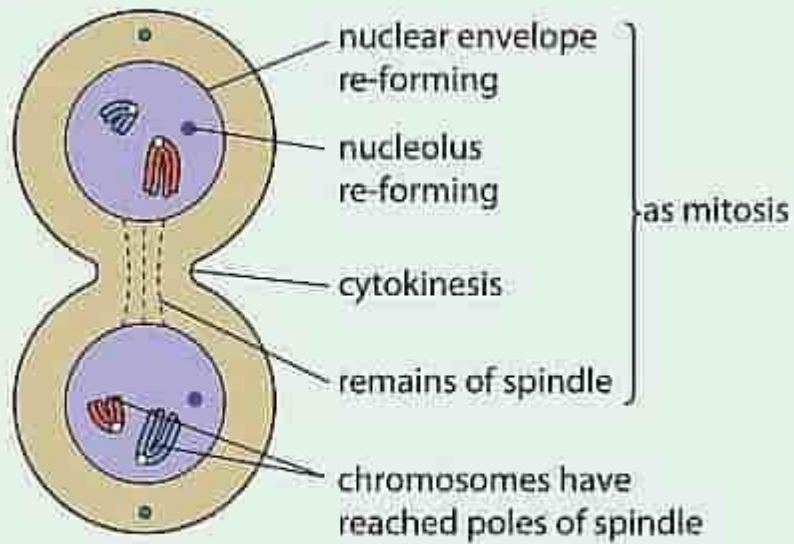


(4) Metaphase I



(5) Anaphase I

Telophase I



Animal cells usually divide before entering meiosis II. Many plant cells go straight into meiosis II with no reformation of nuclear envelopes or nucleoli. During meiosis II, chromatids separate as in mitosis.