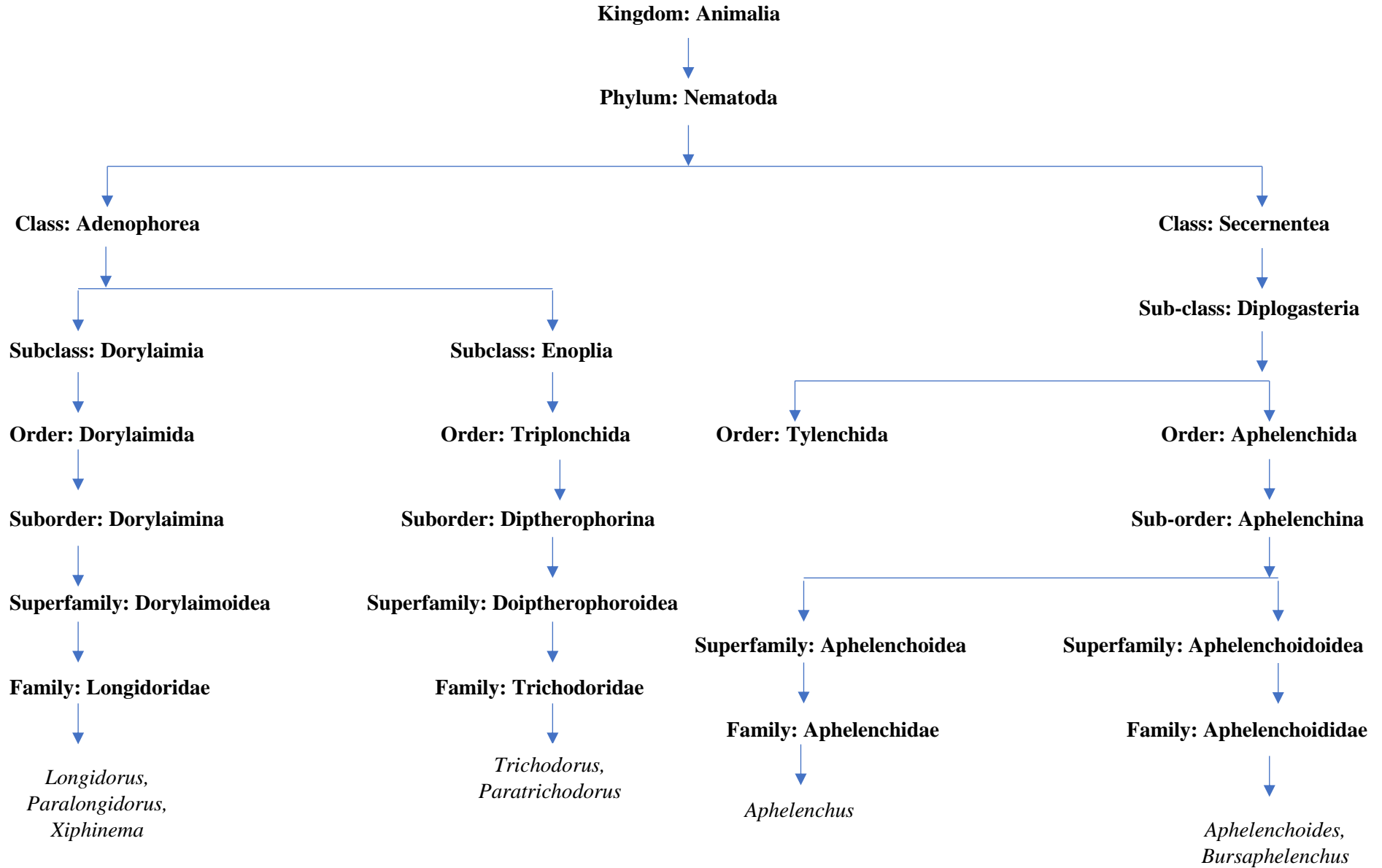


CLASSIFICATION OF NEMATODES



CLASSIFICATION OF NEMATODES

Order: Tylenchida (6 Superfamilies)

Superfamily: 1. Tylenchoidea



1. **Tylenchidae** (e.g. *Tylenchus*, *Filenchus*, *Coslenchus*, *Malenchus*)
2. **Tylenchorhynchidae** (e.g. *Tylenchorhynchus*, *Merlinius*)
3. **Dolichodoridae** (e.g. *Dolichodorus*)
4. **Belonolaimidae** (e.g. *Belonolaimus*)
5. **Pratylenchidae** (e.g. *Pratylenchus*, *Radopholus*, *Hirschmanniella*)
6. **Hoplolaimidae** (e.g. *Aorolaimus*, *Helicotylenchus*, *Hoplolaimus*, *Peltamigratus*, *Rotylenchus*, *Rotylenchulus*, *Scutellonema*)
7. **Psilenchidae** (e.g. *Psilenchus*)
8. **Tylodoridae** (e.g. *Tylodorus*)

Superfamily: 2. Atylenchoidea



1. **Atylenchidae** (e.g. *Eutylenchus*, *Atylenchus*)
2. **Meloidogynidae** (e.g. *Meloidogyne*, *Meloinema*, *Bursadera*)

Super Family: 3. Heteroderoidea



1. **Heteroderidae** (eg. *Cactodera*, *Globodera*, *Heterodera*, *Punctodera*, *Meloidogyne*)
2. **Nacobbidae** (e.g. *Nacobbus*)

CLASSIFICATION OF NEMATODES

Super Family: 4. Criconematoidea



1. **Cricoematidae** (e.g. *Criconema*, *Criconemoides*, *Hemicriconemoides*, *Hemicycliophora*)
2. **Paratylenchidae** (e.g. *Paratylenchus*)
3. **Tylenchulidae** (e.g. *Tylenchulus*, *Trophotylenchulus*, *Sphaeronema*)
4. **Tylenchocriconematidae** (e.g. *Tylenchocriconema*)

Super Family: 5. Neotylenchoidea



- Family: 1. **Neotylenchidae** (e.g. *Neotylenchus*)
- Family: 2. **Paurodontidae** (e.g. *Paurodontus*)
- Family: 3. **Nothotylenchidae** (e.g. *Nothotylenchus*)
- Family: 4. **Ecphyadophoridae** (e.g. *Ecphyadophora*)

Super Family: 6. Sphearularioidea



- Family: 1. **Sphearulariidae** (e.g. *Sphearularia*, *Tripius*)
- Family: 2. **Anguinidae** (e.g. *Anguina*, *Ditylenchus*, *Subanguina*)
- Family: 3. **Halenchidae** (e.g. *Halenchus*)