



Centurion  
UNIVERSITY

## Maintenance after 125 hours of operation

Presented by  
**Mr. Shekhar Kumar Sahu**

**DEPARTMENT OF AGRICULTURAL ENGINEERING, SoABE  
CENTURION UNIVERSITY OF TECHNOLOGY AND MANAGEMENT  
PARALAKHEMUNDI, ODISHA**



## **The 125-hour maintenance generally includes the following:**

- Repeating the activities carried out in 50h maintenance schedule
- Changing crankcase oil
- Replacing the oil filter
- Servicing the crankcase breather
- Maintenance of tractor tyres
- Checking and servicing other parts of the tractor



1. Repeating the activities carried out in 50h maintenance schedule
2. Changing Crankcase Oil: The procedure for changing crank case oil is as under
  - a) Keep the tractor on the level ground. Operate its engine until thoroughly heated up
  - b) Remove drain plug
  - c) Allow crankcase to drain for several minutes
  - d) Change oil filter as described in steps (3)
  - e) Put drain plug again
  - f) Refill crankcase with new oil up to desired level
  - g) Start engine and operate it for few minutes at low rpm
  - h) Check oil leakage, if any
  - i) Check oil level with dip stick and keep it a



Fig: 1.View of crank case oil (Courtesy: Escort Tractor)



### 3. Replacing the oil filter:

It removes 1/20 to 1/30th solids from the lubricating oil.

- a) Locate oil filter
- b) Clean it with used cloth
- c) Loosen filter bowl and remove it
- d) Remove oil filter cartridge and discard it
- e) Clean inside of bowl with diesel
- f) Install new gaskets
- g) Install new filter unit
- h) Refill the filter bowl



Fig: 3. View of oil filter (Courtesy: Escort Tractor)



#### 4. Servicing the Crank Case Breather:

- a) Remove the crankcase breather
- b) Wash filter element with diesel
- c) Shake out excess cleaning fluid
- d) Re-lubricate mesh with light crankcase oil
- e) Remove excess oil
- f) Reinstall the crankcase breather

#### 5. Maintenance Tractor Tyres:

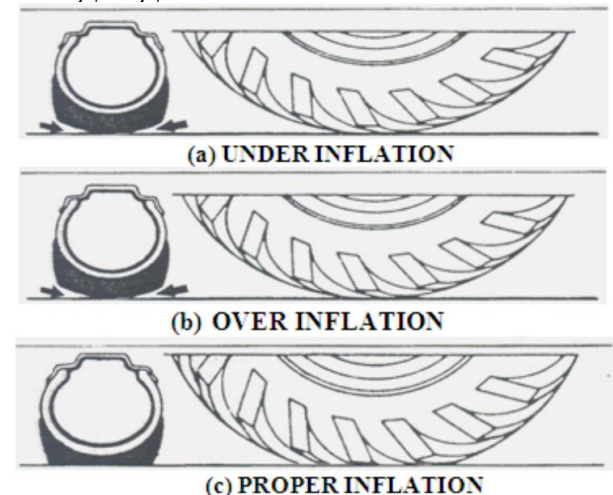
- a) Check Tyre inflation pressure in rear and front tyres with pressure gauge:
- b) Recommended tyre pressure are:  
Front - 1.1 to 1.25 kg/cm<sup>2</sup> and Rear - 1.6 to 1.85 kg/cm<sup>2</sup>
- c) Have proper tyre pressures & check with tyre pressure gauge



Fig: 5. View of front tyre



Fig: 6. View of rear tyre





6. Checking and servicing other parts of the tractor Check the following and if needed put some lubricating oil.

- a) Generator/ Alternator bearing
- b) Distributor shaft



Fig: 8. View of alternator used in tractor (Courtesy: Escort Tractor)