

A close-up photograph of a chilli plant. The green leaves show signs of damage, with some exhibiting small, brown, necrotic spots. Several bright red chilli fruits are visible, some appearing slightly shriveled or distorted. The background is dark, making the green leaves and red fruits stand out.

# **PRACTICE-3 TO STUDY ABOUT DISEASES OF CHILLI**

**M.S.Swaminathan School of Agriculture,CUTM**



**Centurion**  
**UNIVERSITY**

Shaping Lives...  
Empowering Communities...

# Identification of Chilli Disease in field Condition



**Anthracnose of Chilli**  
**Causal organism: *Colletotrichum capsici***



**Centurion**  
**UNIVERSITY**

*Shaping Lives...  
Empowering Communities...*



**Leaf curl of Chilli**



Centurion  
UNIVERSITY

Shaping Lives...  
Empowering Communities...

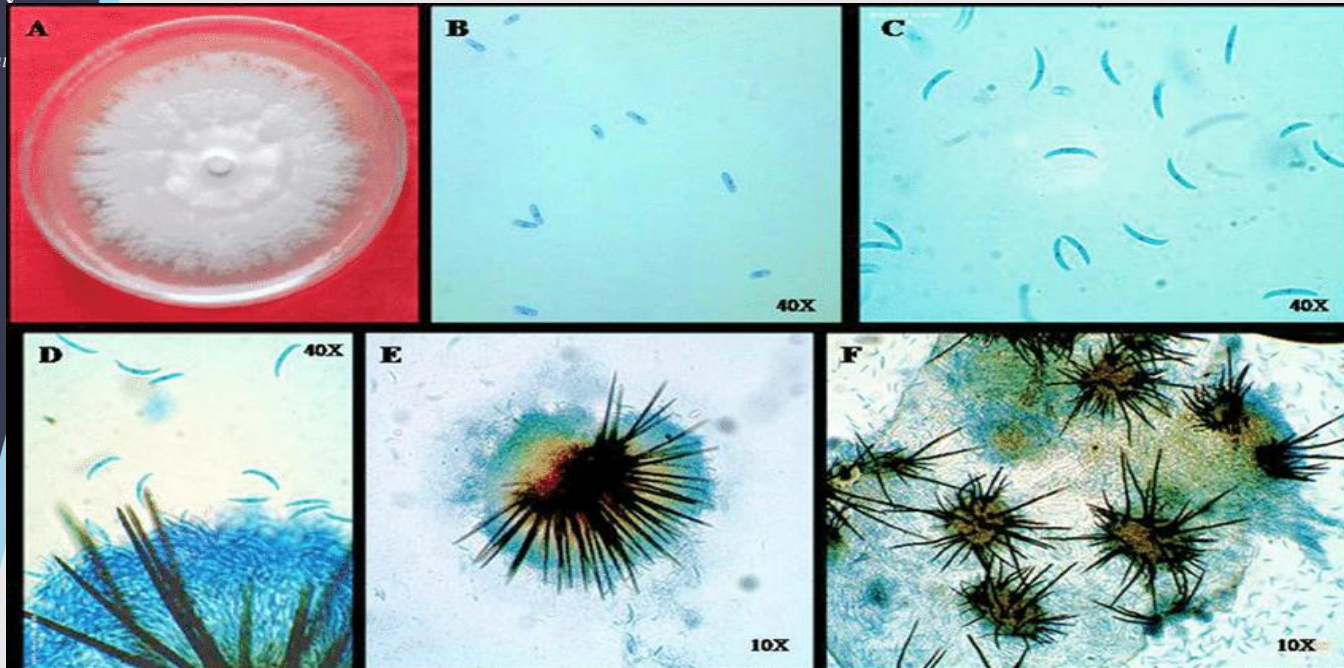
# Procedure of slide preparation

- Place a drop of fluid(Cotton blue or Lactophenol) in the center of the **slide**.
- Position sample(Thickness of 5mm) on liquid, using tweezers.
- At an angle, place one side of the cover slip against the **slide** making contact with outer edge of the liquid drop.
- Lower the cover slowly, avoiding air bubbles.
- Remove excess water with the paper towel.



**Centurion**  
**UNIVERSITY**  
*Shaping Lives...  
Empowering Communi*

# Identify the conidia



Conidia of  
*Colletotrichum capsici* of chilli



**Centurion**  
**UNIVERSITY**

*Shaping Lives...  
Empowering Communities*

# Identify characteristic of pathogen

**The mycelium is septate and grows both inter and intracellularly in the host tissue.**

- The asexual fruiting bodies, acervuli contain many rigid, brown coloured, 1-5 septate setae.
- A large number of conidia are borne on conidiophores in each acervulus which are falcate, unicellular, hyaline having a normally truncated base.