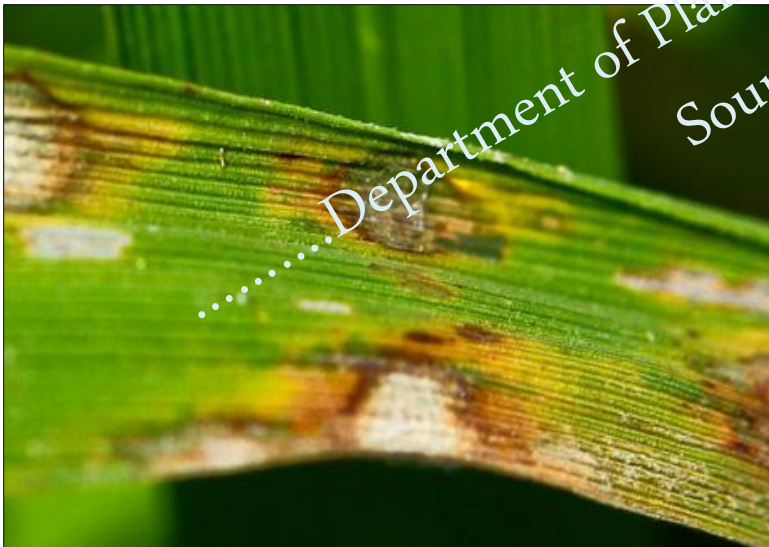
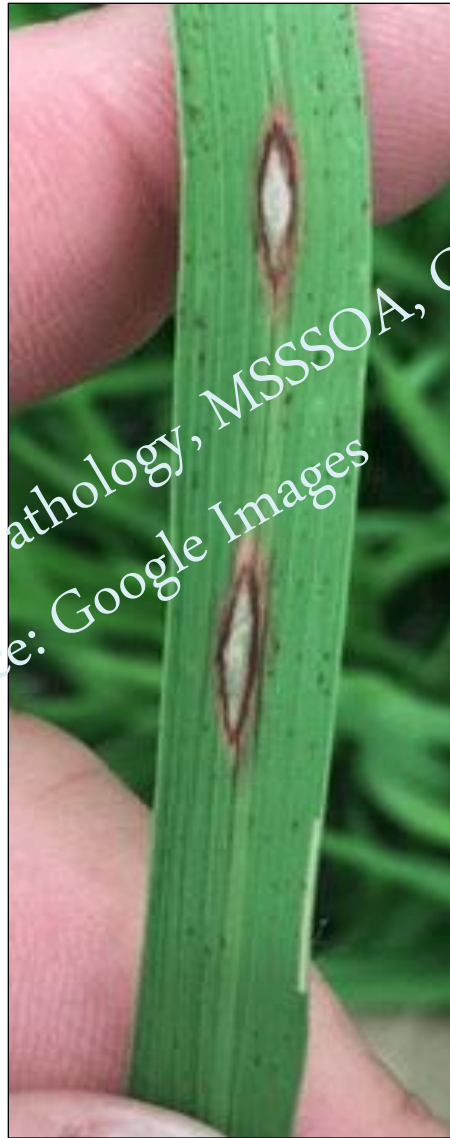


Important Diseases of Rice

1. Blast - *Pyricularia oryzae* (T - *Magnaporthe grisea*)
2. Brownspot - *Bipolaris oryzae* (T - *Cochliobolus miyabeanus*)
3. Sheath Blight - *Rhizoctonia solani* (T- *Thanetophorus sasaaki*)
4. False Smut - *Ustilaginoidea virens* (T – *Claviceps oryzae sativae*)
5. BLB - *Xanthomonas oryzae* pv *oryzae*
6. Tungro - RTSV (*Waikavirus*) + RTBV (*Tungrovirus*)
7. Khaira disease - Zn deficiency
8. Stem Rot - *Sclerotium oryzae*
9. Sheath Rot - *Saracladium oryzae*
10. Udbatta disease - *Ephelis oryzae*
11. BLS - *X. oryzae* pv *oryzicola*
12. Grassy stunt - *Tenuivirus*

Rice Blast



Department of Plant Pathology, MSSSOA, CUTM.
Source: Google Images



Healthy



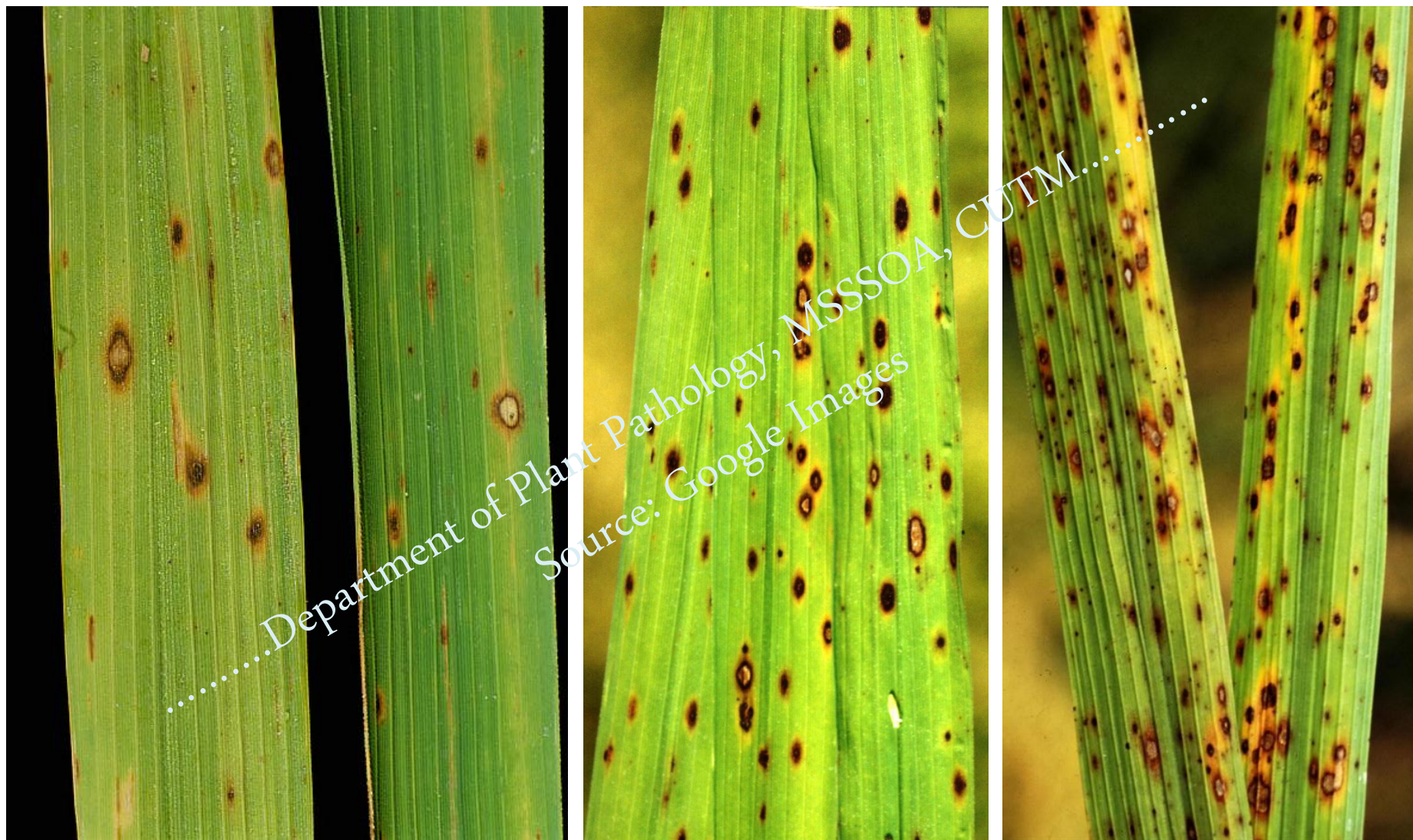
Diseased

Department of Plant Pathology, MSSSOA, CUTM.....
Source: Google Images



.....Department of Plant Pathology, MSSSOA, CUTM.....
Source: Google Images

Rice Brown spot





.....Department of Plant Pathology, MSSSOA, CUTM.....

Source: Google Images



Department of Plant Pathology, MSSSOA, CUTM
Source: Google Images

Rice Blast vs Brown Spot



Department of Plant Pathology, MSSSOA, CUTM.
Source: Google Images

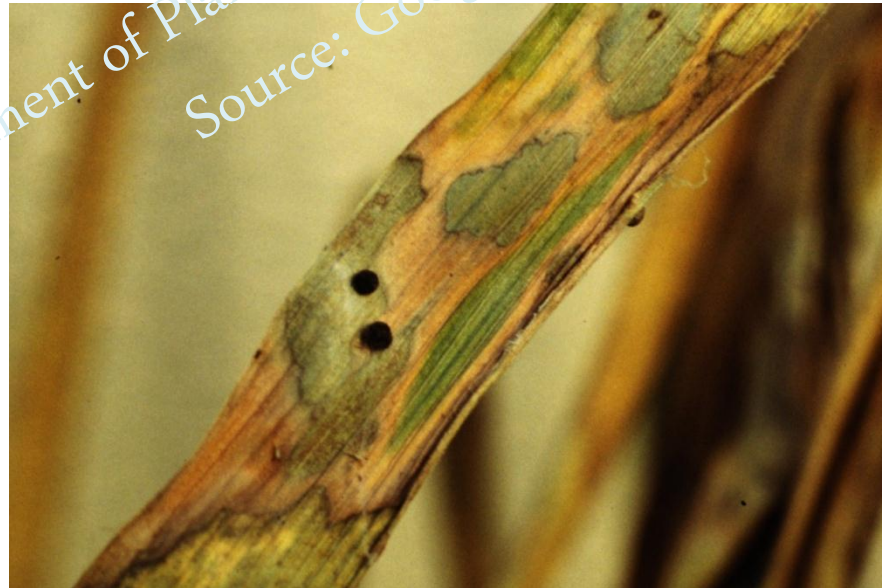
Rice Sheath Blight



.....Department of Plant Pathology, MSSSOA, CUTM.....
Source: Google Images



Department of Plant Pathology, MSSSOA, CUTM.
Source: Google Images



Rice False Smut



Department of Plant Pathology, MSSSOA, CUTM.....
Source: Google Images

Rice Bacterial Leaf Blight



.....Department of Plant Pathology, MSSSOA, CUTIM.....
Source: Google Images



Department of Plant Pathology, MSSSOA, CUTM.....
Source: Google Images



.....Department of Plant Pathology, MSSSOA, CUTM.....
Source: Google Images

Rice Tungro Disease



.....Department of Plant Pathology, MSSSO, CUTM.....
Source: Google Images



.....Department of Plant Pathology, MSSSOA, CUTM.....

Source: Google Images

Rice Khaira Disease

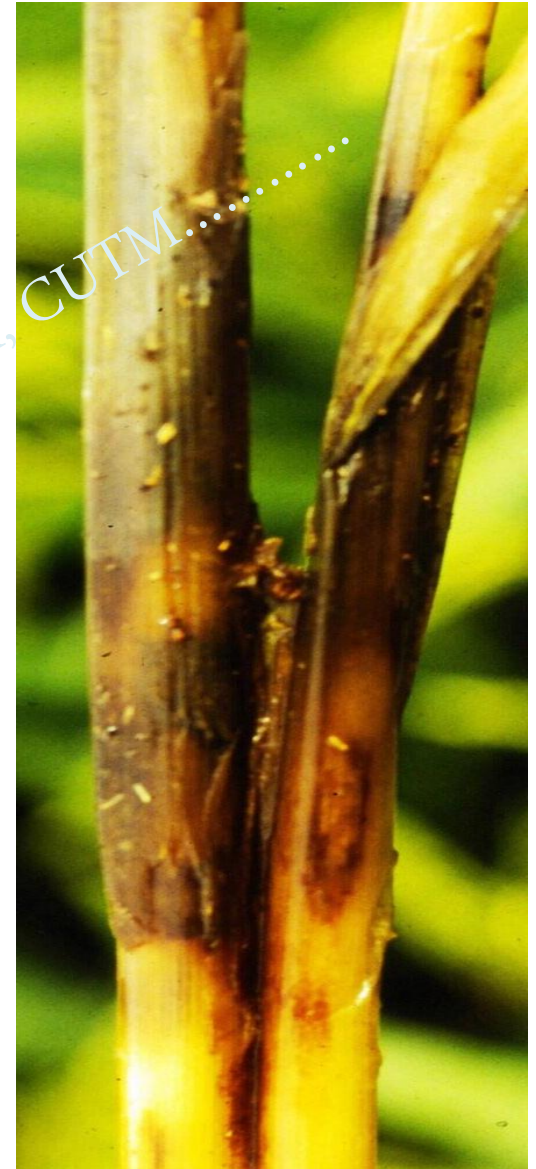


.....Department of Plant Pathology, MSSSOA, CUTM.....
Source: Google Images



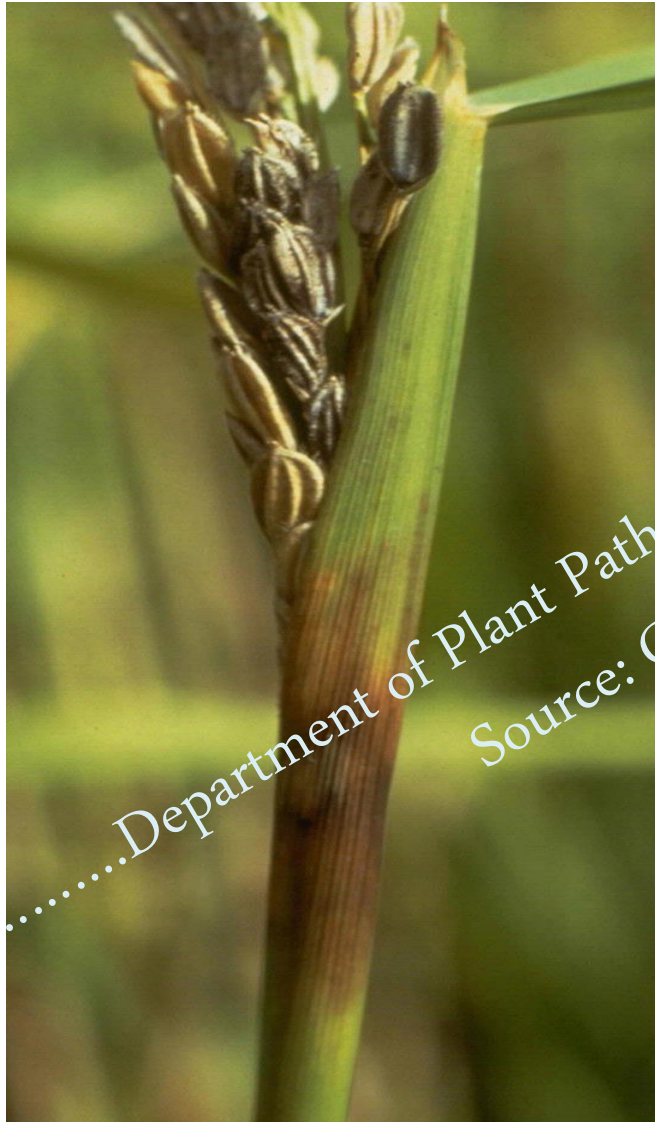
Department of Plant Pathology, MSSSOA, CUTM.
Source: Google Images

Rice Stem Rot



Department of Plant Pathology, MSSSOA, CUTM.
Source: Google Images

Rice Sheath Rot



.....Department of Plant Pathology, MSSSOA, CUTM.....
Source: Google Images

Rice Foot Rot



Department of Plant Pathology, MSSSOA, CUTM...
Source: Google Images

Rice Bacterial Leaf Streak

