



Centurion  
UNIVERSITY

Shaping Lives...  
Empowering Communities...

# Welcome to Rural Sociology and Educational Psychology

SESSION 9

PERSONALITY

MR CHITRASENA PADHY

ASSISTANT PROFESSOR

AGRICULTURAL EXTENSION



**Centurion**  
**UNIVERSITY**

*Shaping Lives...  
Empowering Communities...*

# Personality

- combination of characteristics or qualities that form an individual's distinctive character.
- **Personality is the product of social interaction in group life.**





Centurion  
UNIVERSITY

Shaping Lives...  
Empowering the Future

# Types of Personality:

- **Introverts** will react negatively to situations; withdraw from the society, inwardly, selective
- withdraws from the active participation in the objective world and
- interested in his inner world of thought and fantasy.
- will not move freely with others.





Centurion  
UNIVERSITY

Shaping Lives...  
Empowering the Future

- **Extroverts** react positively and outwardly expressive.
- An extrovert is neither deeply affected by failure nor much occupied with self analysis of self -criticis





**Centurion**  
**UNIVERSITY**

*Shaping Lives...  
Empowering the Future*

# Measurement of personality

- **Self-report measures**
  - **Myers-Briggs Type Indicator**
  - **Neo Pi-R**
  - **MMPI/MMPI-2**
  - **16 PF**
  - **Eysenck Personality Questionnaire**
  - **Behavioral Measures**
  - **Projective Measures**



**Centurion**  
**UNIVERSITY**  
*Shaping Lives...  
Empowering Communities...*

## Self-report measures

question-and-answer format.

respondent to provide information about their own personality.

used for both psychiatric and no psychiatric populations.

Some of the measures are the Myers-Briggs Type Indicator, Neo Pi-R, MMPI/MMPI-2, 16 PF, and Eysenck Personality Questionnaire.



Centurion  
UNIVERSITY

Shaping Lives...

Empowering Communities...

## Myers-Briggs Type Indicator

The Myers-Briggs Type Indicator (MBTI) is one of the most popular personality inventories used with nonpsychiatric populations.

The MBTI measures individuals across four bi-polar dimensions: *Extraversion-Introversion*, *Sensing-Intuition*, *Thinking-Feeling*, and *Judging-Perceiving*



**Centurion**  
**UNIVERSITY**

*Shaping Lives...  
Empowering Communities...*

**Thinking**



**Feeling**



**Sight Sound**

**Smell Taste**

**Touch**





Centurion  
UNIVERSITY

Shaping Lives...  
Empowering Communities...

## Neo Pi-R

- designed to measure personality traits using the five factor model.

Each of the five dimensions of personality lies along a continuum of opposing poles.

The five factors are: *Openness to Experience*, *Conscientiousness*, *Extroversion*, *agreeableness*, *neuroticism*



Centurion  
UNIVERSITY

Shaping Lives...  
Empowering Communities

## MMPI/MMPI-2

- Minnesota Multiphasic Personality Inventory (MMPI) widely used personality inventory both with psychiatric and nonpsychiatric populations.
- diagnosis of personality disorders.





**Centurion**  
**UNIVERSITY**  
*Shaping Lives...  
Empowering Communities...*

## 16 PF



16 PF (personality factor) inventory measures personality according to Cattell's 16 factor theory of personality.

The 16 PF is intended for nonpsychiatric populations.



# Eysenck Personality Questionnaire

Centurion  
UNIVERSITY  
Shaping Lives...  
Empowering Communities...



- based upon Eysenck's model of personality.
- based on a large body of factor analytic research and laboratory experiments.
- focuses on three dimensions: *psychoticism*, *extraversion*, and *neuroticism*.





**Centurion**  
**UNIVERSITY**

*Shaping Lives...  
Empowering Communities...*

# Behavioral Measures

- Behavioral measures focus on behavior itself.
- employ reports such as self-report measures, behavior observations.



Centurion  
UNIVERSITY

Examples of behavioral inventories include the Alcohol Beliefs Scale, Binge Eating Questionnaire, Compulsive Activity Checklist, Daily Sleep Diary, and Panic Attack Questionnaire.



**Centurion**  
**UNIVERSITY**

*Shaping Lives...  
Empowering Communities...*

# Projective Measures

found in psychoanalytic theories of personality and involve using ambiguous stimuli to reveal inner aspects of an individual's personality.



**Centurion**  
**UNIVERSITY**

*Shaping Lives...  
Empowering Communities...*

the most popular projective measures are

- Thematic Appreciation Measure
- the Rorschach test.





Centurion  
UNIVERSITY

Shaping Lives...  
Empowering Communities...

## Rorschach Test



- consists of ten inkblots .
- dribbling ink on paper and then folding over the paper to create a symmetrical design.
- During the test, participants are shown the inkblots and asked what each one might be.



**Centurion**  
**UNIVERSITY**

*Shaping Lives...*  
*Empowering Communities...*

- used to examine a person's personality characteristics and emotional functioning,



Centurion  
UNIVERSITY

Shaping Lives...  
Empowering Communities

## Simulated Ink Blot:

This simulated ink blot is similar to what would be on the Rorschach test.



**Centurion**  
**UNIVERSITY**  
*Shaping Lives...  
Empowering Communities...*

# Thematic Apperception Test

- consists of 30 cards depicting ambiguous drawings. Test takers are asked to tell a story about each picture,
- indicate a person's personality characteristics and emotional functioning.



Centurion  
UNIVERSITY

Shaping Lives...  
Empowering Tomorrow...

# Ambivert Personality:

- place **between** extroverts and introverts.
- behavior is **balanced**.
- Their psychic (internal) energy is partly directed **inwards** and partly **outwards**
- They are interested in their own thoughts, emotions and also in other persons and their actions



Centurion  
UNIVERSITY

Shaping Lives...  
Empowering Communities

# Importance or role of Personality in Agricultural Extension:

- The extension worker can know types and traits of the **personalities** of his clients
- extension worker can **judge** and follow the method of guiding, by selecting suitable **teaching method**



Centurion  
UNIVERSITY

Shaping Lives...  
Empowering Institutions...

# Factors affecting the Personality:

## Biological Factors:

- **Heredity:**

- **Physique:**

- **Endocrine Glands:**

(Thyroid, Parathyroid, Adrenal, Gonads)

## Nervous System:



**Centurion**  
**UNIVERSITY**

*Shaping Lives...*

*Empowering the Future*

# Environment Factors:

- Home:
- School:
- Maturation and Personality
- Early Experience:
- Success and Failures:

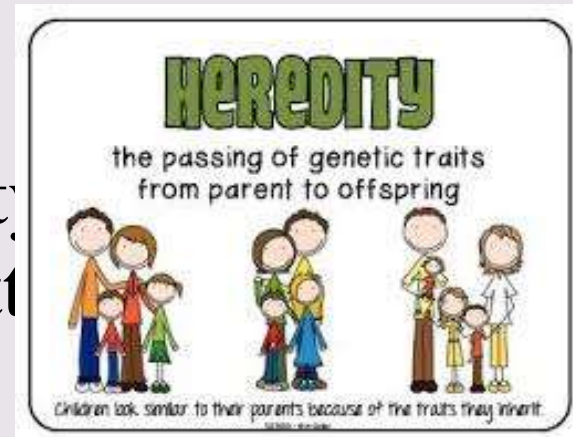




## Heredity:

Factor in personality,  
traits are transmitted  
genes.

Theory of dominant and recessive  
genes.





**Centurion**  
**UNIVERSITY**  
*Shaping Lives...  
Empowering Communities...*

## **Physique:**

- Physique refers to the relatively enduring, biological makeup and liabilities of an individual resulting from both genetic and environmental influences which determine his reactive potentialities.

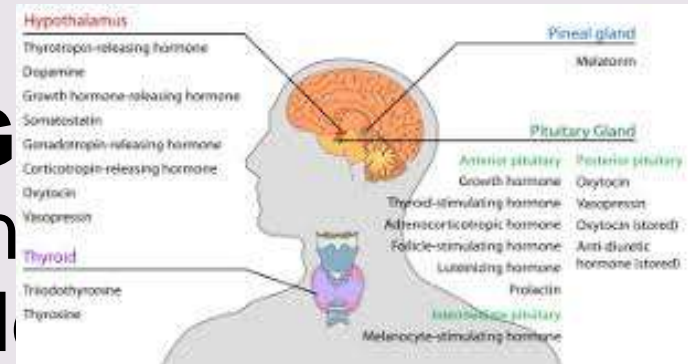


Centurion  
UNIVERSITY

Shaping Lives...  
Empowering Communities...

## Endocrine Glands

- characterized for interdependence
- secrete hormones.
- Any over-activity or under-activity of these glands can cause increase or decrease in hormones resulting in personality disorder





Centurion  
UNIVERSITY

Shaping Lives...  
Empowering Communities...

## Thyro



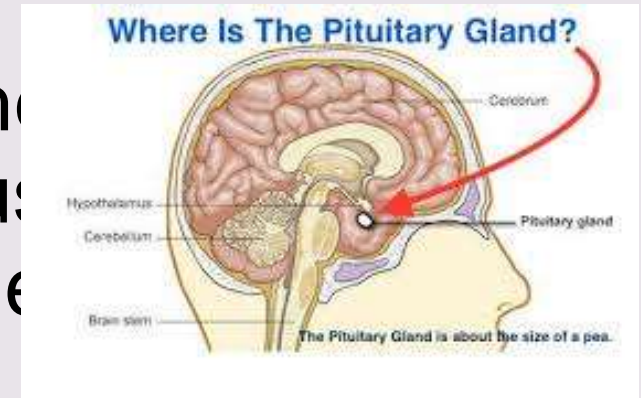
- Thyroid gland secretes
- Any excess of the hormone leads to tension and unstableness,
- deficiency takes one to imbecile level



**Centurion  
UNIVERSITY**  
*Shaping Lives...  
Empowering Communities...*

## Parathyroid:

- calcium equilibrium in the
- Over-activity of this gland causes emotional instability, e



## (iii) Pituitary.

- secretes sarnatotropin.
- controls the other glands of the body.



**Centurion**  
**UNIVERSITY**

*Shaping Lives...  
Empowering Communities...*

## **Adrenal:**

- secretes cortin and adrenin.
- Cortin deficiency results in increased fatigability, anaemia, loss of appetite, etc.
- adrenin is discharged in times of great emotional stress



**Centurion**  
**UNIVERSITY**  
*Shaping Lives...  
Empowering Communities...*

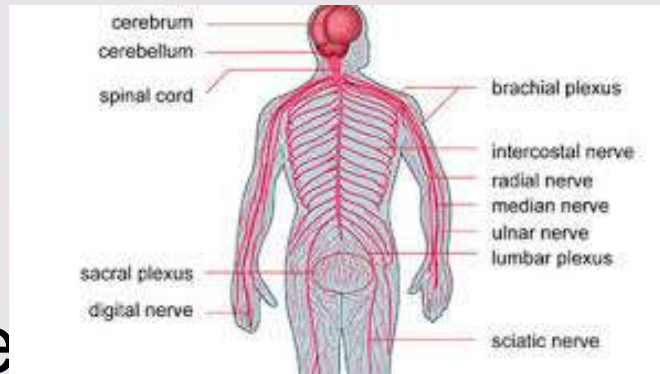
## **Gonads:**

- secretes testosterone and androstosterone that are responsible for growth of male sex organs
- estrogens and progestins in females promote sexual maturity



Centurion  
UNIVERSITY

Shaping Lives...  
Empowering Communities...



Memory-motor system  
Memory-motor system is also determined by the nervous system. The autonomic nervous system and the central nervous system are responsible for personality development





Centurion  
UNIVERSITY

Shaping Lives...  
Empowering Communities...

- Home has much bearing on personality development.
- Parents behaviour and attitude,
- their expectations from the child,
- their education and attention to the child, influences the child's personality.

# Environment Factors:



**Centurion**  
**UNIVERSITY**

*Shaping Lives...  
Empowering Communities...*



## **School:**

After home school is the next socializing agent, by the fact that the child spends most of his time with his peers.



**Centurion**  
**UNIVERSITY**

*Shaping Lives...  
Empowering Communities...*

## **Maturation and Personality:**

Personality influenced by maturation.  
Maturation improves the coordination of numerous relationships.



**Centurion**  
**UNIVERSITY**  
*Shaping Lives...  
Empowering Communities...*

# Early Experience

- Personality influenced by childhood experiences.
- If a person suffers bitter experiences often is subjected to undue thwartings at the early stage of life,
  - regress to interests from outer to inner spheres
  - become self-centred.





**Centurion**  
**UNIVERSITY**

*Shaping Lives...  
Empowering Communities...*

## **Success and Failures:**

play a key role in the determination of personality.

Success motivates the individual for more attempts and success in future. ■



**Centurion**  
**UNIVERSITY**

*Shaping Lives...*  
*Empowering Communities...*

- makes the individual about his abilities
- failure leads to the development of negative traits, i.e., inferiority feeling, low aspiration, escape and blame, etc.



**Centurion**  
**UNIVERSITY**

*Shaping Lives...*  
*Empowering Communities...*

THANK YOU



**Centurion**  
**UNIVERSITY**

*Shaping Lives...  
Empowering Communities...*

# Modern communication media: electronic video