



# What is Noise ?

- Sound that which is unwanted and distrupts one's quality of life, is known as NOISE.
- Normal sound becomes undesirable when it disturbs our normal activities such as working , sleeping and during conversation.
- World Health Organization stated that “Noise must be recognized as a major threat to human well-being”.

# Types of Noise:-

## External Noise:-

- Atmospheric noise.
- Extraterrestrial noise.
- Industrial noise.
- Man made noise.

## Internal Noise:-

- Thermal noise.
- Shot noise.
- Transit time noise.
- Miscellaneous noise.

# What is Noise Pollution ?

- Sound that is unwanted or that disrupts the activity or balance of human or animal life is called as noise.
- When there is lot of noise in the environment, then it is termed as noise pollution.

# **Sources of Noise Pollution:-**

## **THESE ARE THE MAIN SOURCES OF NOISE POLLUTION :-**

- ❑ **Household sources.**
- ❑ **Social Events.**
- ❑ **Commercial & Industrial Activities.**
- ❑ **Transportation.**

# **Household Sources:-**

- ❑ **Gadgets like food mixer, grinder, vacuum cleaner, washing machine and dryer, cooler, air conditioners, can be very noisy and injurious to health.**
- ❑ **Others include loud speakers of sound systems and TVs, ipods and ear phones.**
- ❑ **Another example may be your neighbour's dog barking all night everyday at every shadow it sees, disturbing everyone else in the apartment.**

# Household Sources:-



# Social Events:-

- Places of worship, discos and gigs, parties and other social events also create a lot of noise for the people living in that area.
- In many market areas, people sell with loud speakers, others shout out offers and try to get customers to buy their goods.
- It is important to note that when these events are not often, they can be called “Nuisance” rather than noise pollution.



# Social Events:-



# **Commercial & Industrial**

## **Activities:-**

- **Printing presses, manufacturing industries, construction sites contribute the noise pollutions in large cities.**
- **In many industries it is a requirement that people always wear earplugs to minimize their exposure to heavy noise.**
- **People who work with noisy equipments are required to wear noise-proof gadgets.**

# Commercial & Industrial Activities:-



# Transportation:-

- Aeroplanes flying over houses close to busy airports.
- Over ground and Under ground trains ,vehicles on roads, these are constantly making a lot of noise.



# Transportation:-



# Noise Levels:-

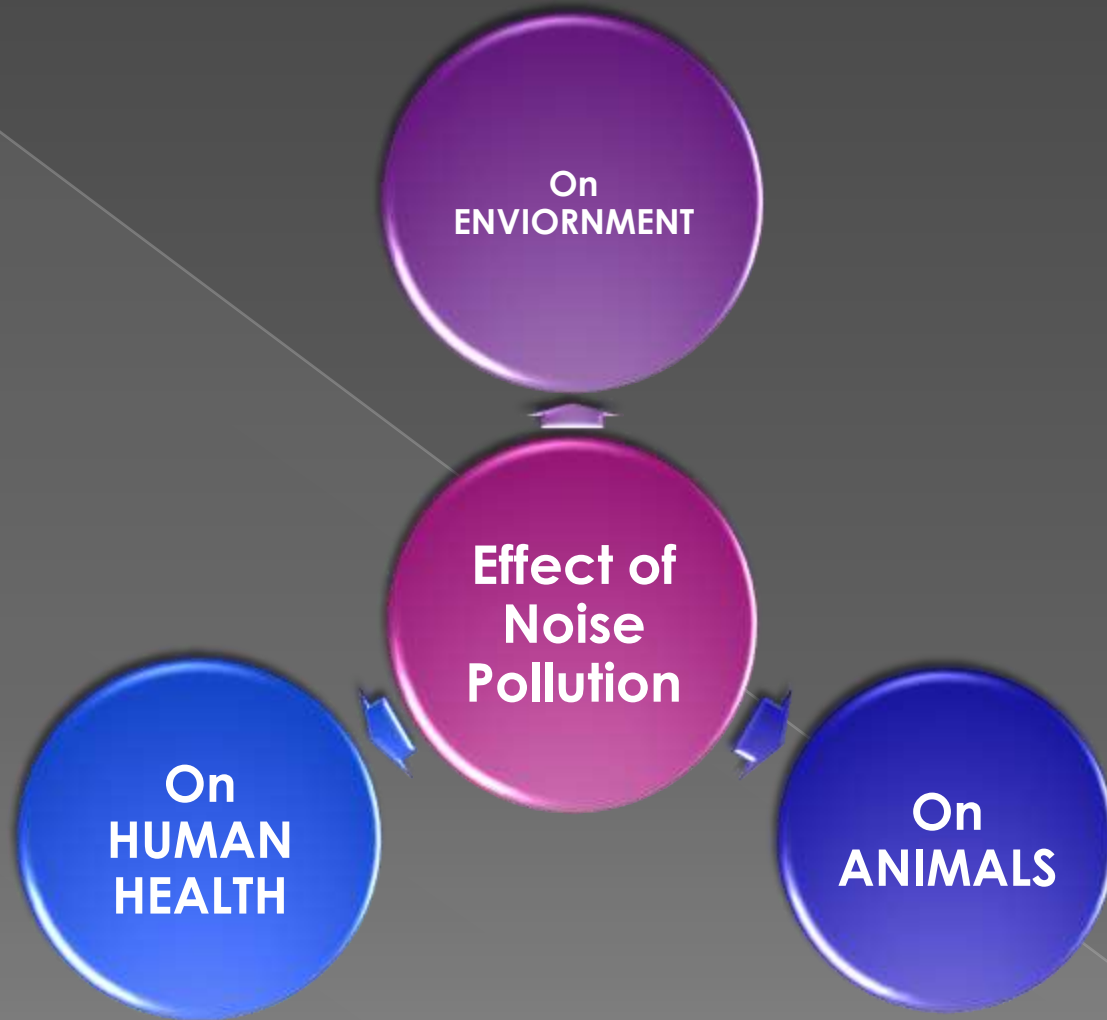


TYPE OF THE VEHICLE	NOISE LEVEL
Luxury Bus	77dB
Small passenger Car	79dB
Miniature passenger Car	84dB
Sports car	91dB
Motor cycle (4 stroke)	94dB
Motorcycle (2 stroke)	80dB



An illustration depicting the effects of noise pollution. In the background, a family of three (a man, a woman, and a child) stands on a grassy hill under a large white daisy. An airplane flies in the sky above them. In the foreground, a grey train moves across a blue track, with a penguin on its roof. A person stands in a blue circle on the ground, with white curved lines representing sound waves emanating from them. To the right, a grey multi-story building is shown with a car parked in front of it, also emitting sound waves. A green tree stands next to the car. In the bottom left, a blue fish is shown swimming in a body of water. The overall scene is set against a blue background with vertical lines, suggesting a cross-section or a layered environment.

# EFFECTS OF NOISE POLLUTION





# ON HUMANS:-

- **Noise pollution is the reason for cause of nervous disorder, headache, high blood pressure and short memory.**
- **Depression and fatigue, which considerably reduces the efficiency of a person.**
- **Frustration and difficulty in concentration, disturbance of rest, physical and mental fatigue.**
- **Chronic exposure to noise may cause noise-induced hearing loss.**

# More effects on humans:-



**DEAFNESS**

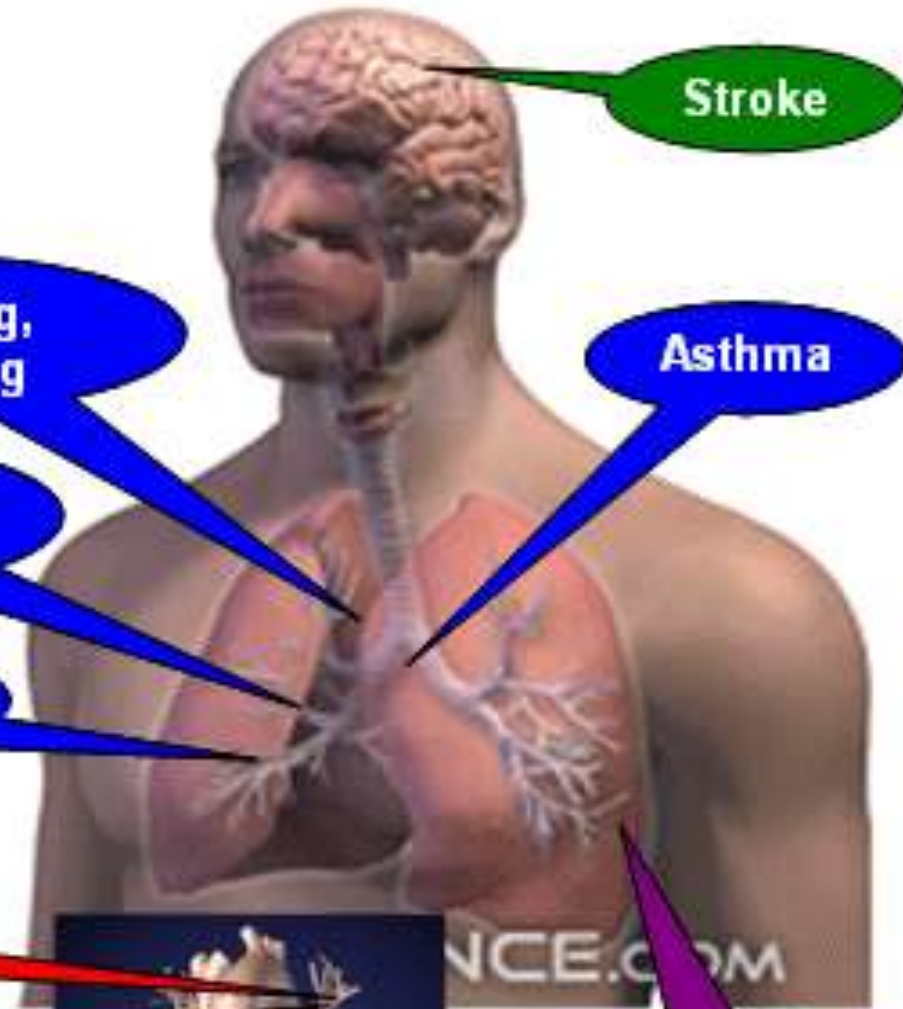
**ANNOYANC**



**STRESS**



**E**



**Stroke**

**Coughing,  
Wheezing**

**Asthma**

**Bronchitis,  
COPD**

**Reduced lung  
development**

**High blood pressure**

**Arteriosclerosis**

**Heart Attack**

**Cancer**

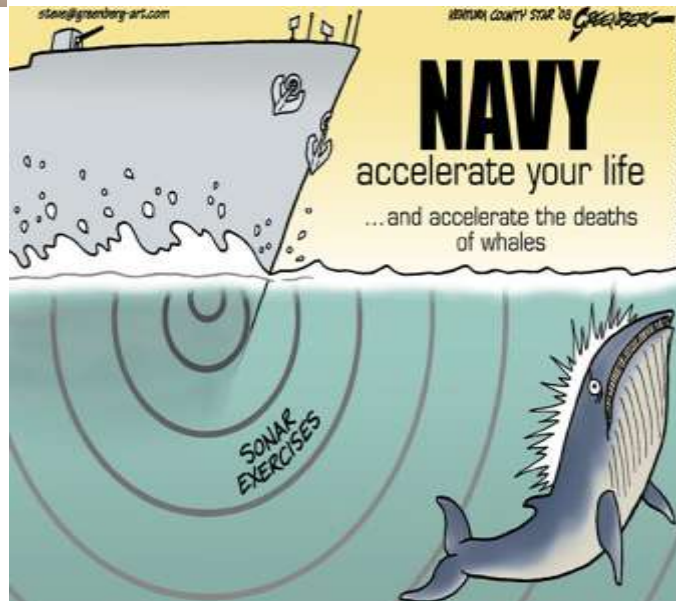
# ON ANIMALS:-

- Noise pollution damages the nervous system of animal.
- Increase of death by altering the prey/predator detection and avoidance.
- Animal looses the control of it's mind.
- Creates problems in their use of sounds in reproduction and navigation.
- They becomes dangerous and attacking.

# ON ANIMALS:-

- Noise pollution from ship engines and sonar systems make it difficult for marine mammals like whales & dolphins, & prevent it from communicating, finding food, and avoiding hazards.
- Excessive noise has the ability to raise an animal's heartbeat speed and even harms an animal's metabolism.

# More effects on animals:-



# ON ENVIORNMENT:-

- Noise also has detrimental effects on the growth of some plants.
- Birds as well rely on hearing to help find them to prey, hence they are seriously disadvantaged by noise.
- Because the noise is breaking the earths barrior and that could lead to destruction of the world in about 2-3 yrs.
- Noise pollution causes poor quality of crops in pleasant atmosphere.

# Prevention of Noise

## Pollution:-

- Do not use car horns unnecessarily. Areas like hospitals and campuses are silence zones and honking is prohibited there.





# Prevention of Noise

## Pollution:-

- **Motors, machines and vehicles also produce loud noises when not maintained properly. Proper maintenance should be carried out for better performance.**



# Prevention of Noise

## Pollution:-

- Turn off the engine of your car or motorbike when you are not using it. It stops the annoying hum, and reduces air pollution also!



# Prevention of Noise

## Pollution:-

- If you are working in an area where there are loud noises, you must wear earplugs to prevent loss of hearing.



# **Prevention of Noise**

## **Pollution:-**

- ❑ **Rake leaves by hand, don't use a noisy leaf blower.**
- ❑ **Trim bushes or shrubs by hand, don 't use a noisy bush trimmer.**
- ❑ **Don 't blast music on the radio or computer or speakers. Be considerate of your own ears and those of other around you.**
- ❑ **Train your dog not to bark so much.**
- ❑ **Do noisy things (dishes, hammering, ect.) over or on a rubber mat to reduce noise**





Thank you