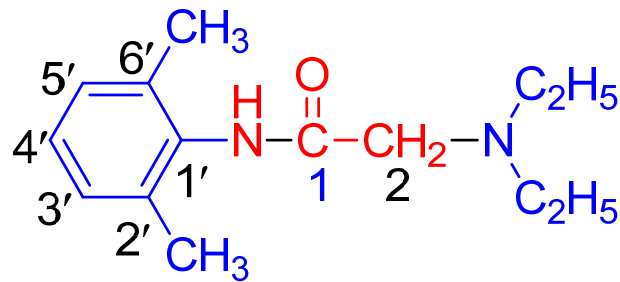


Anilide derivatives

Lignocaine

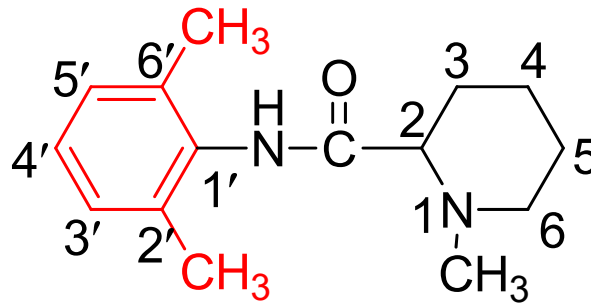


IUPAC: 2-(diethylamino)-*N*-(2',6'-dimethylphenyl)acetamide

MOA: Similar to benzocaine

Uses: For general use as a lubricant and topical anesthetic on esophagus, larynx, mouth, nasal cavity, rectum, respiratory tract or trachea and urinary tract.

Mepivaine

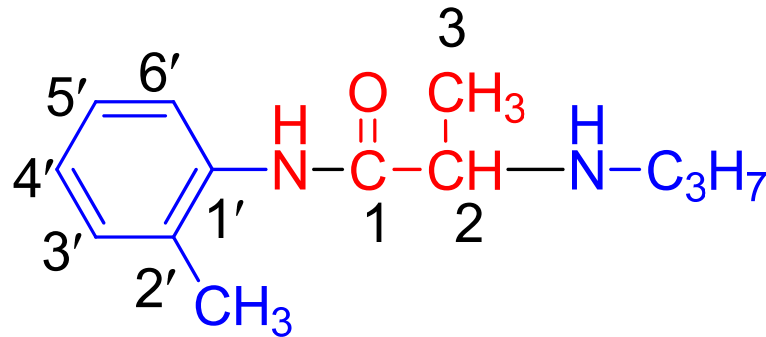


IUPAC: *N*-(2',6'-dimethylphenyl)-1-methylpiperidine-2-carboxamide

MOA: Similar to benzocaine

Uses: For general use as a lubricant and topical anesthetic on esophagus, larynx, mouth, nasal cavity, rectum, respiratory tract or trachea and urinary tract.

Prilocaine

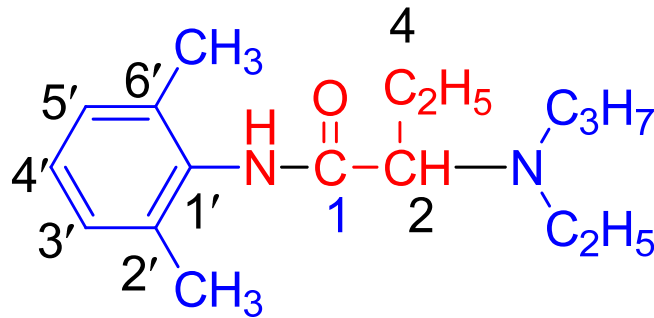


IUPAC: *N*-(2'-methylphenyl)-2-(propylamino)propanamide

MOA: Similar to benzocaine

Uses: For general use as a lubricant and topical anesthetic on esophagus, larynx, mouth, nasal cavity, rectum, respiratory tract or trachea and urinary tract.

Etidocaine



IUPAC: *N*-(2',6'-dimethylphenyl)-2-[ethyl(propyl)amino] butanamide

MOA: Similar to benzocaine

Uses: For general use as a lubricant and topical anesthetic on esophagus, larynx, mouth, nasal cavity, rectum, respiratory tract or trachea and urinary tract.