

STARTING WITH THE NAME OF ALLAH WHO IS THE MURCIFUL AND
BENIFICENT

FRACTURES

PRESENTED BY,

ZESHAN ZAHID

BPOS-III(RMC)PUNJAB.

DEFINITION

- > FRACTURE IS DEFINED AS
“ BREAK IN THE CONTINUITY OF BONE”.
- > BREAK DOWN OF BONE IN TWO OR MORE THAN TWO PARTS.

CAUSES

- DIRECT

“FORCE IS APPLIED DIRECTLY TO THE BONE WHICH BREAKS AT THE SITE OF IMPACT”

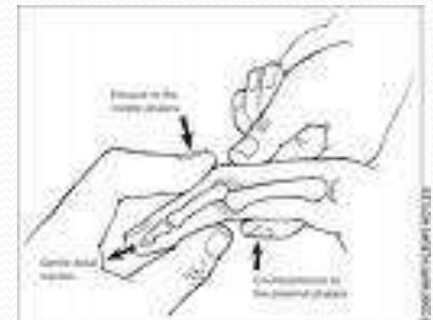
- INDIRECT

“FORCE IS APPLIED AT A DISTANCE, AND FRACTURE OCCURS SOME DISTANCE AWAY FROM THE FORCE”

e.g FALL OF OUTSTRATCHED HAND MAY CAUSE CLAVICAL FRACTURE.

DIFFERENCE BETWEEN # & DISLOCATION

- FRACTURE
“Break down of bone in different parts”
- DISLOCATION
“Displacement of joints”



TYPES OF FRACTURES

➤ SIMPLE/CLOSED FRACTURE

“The fracture occurs along one line, splitting the bone into two pieces and muscles and vessels injury may occurs by sharp edges of bone”

➤ COMPOUND/OPEN FRACTURE

“An open fracture is a fracture where the broken bone is exposed. That is dangerous because of increased chances of infection.



- **MULTI SEGMENTAL #:**

In this the bone splits into multiple pieces.



- **COMPACT #:** in this the fracture is caused when bone fragments are driven into each other.



- GREEN STICK FRACTURE

“Occurs in bones of children usually define as a split in bones and not a complete break”



- COMPLICATED FRACTURE

“ Any fracture in which blood vessels, nerves, joints or any viscera is involved.

e.g # of ribs in which ribs may penetrate in lungs.



- FISSURE #

“In this a crack appears in the bone”



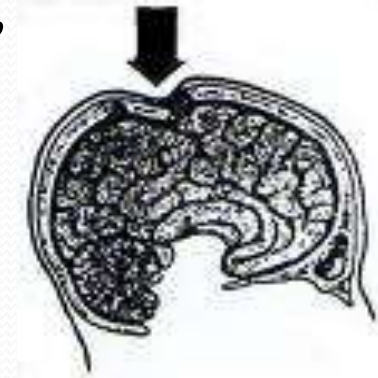
- OBLIQUE #

“In this the fracture is diagonal to a bone's long axis”



- DEPRESSED #

“This is also type of complicated # occurs in skull”



- COMMINUTED #

“In this the fracture results in several fragments”



● IMPECT

“An impacted fracture is similar to a compression fracture, yet it occurs within the same bone. It is a closed fracture which occurs when pressure is applied to both ends of the bone, causing it to split into two fragments that jam into each other. This type of fracture is common in car accidents and falls”



● PATHOLOGICAL

“Occurs in soft bones(diseased) due to osteoporosis, osteomalacia etc”



- STRESS #

“This type of fracture is caused by repeated minor trauma as in training of athletes. In this small cracks appear in the bone”

