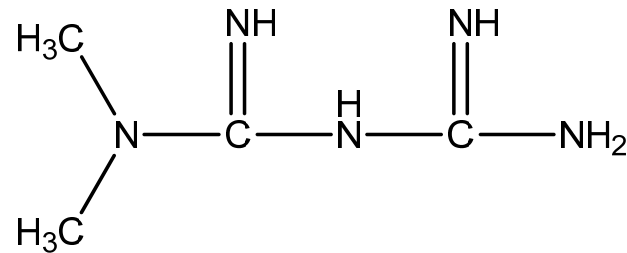


## Biguanides

### Metformin

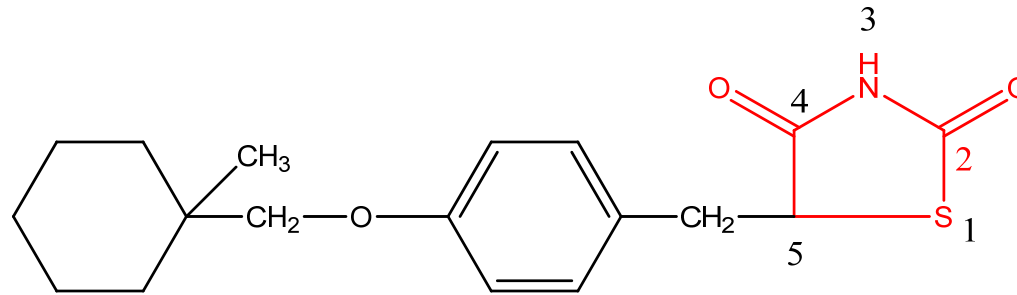


**MOA:** Its mechanisms of action is unique from other classes of oral antihyperglycemic drugs. Metformin decreases blood glucose levels by decreasing hepatic glucose production (gluconeogenesis), decreasing the intestinal absorption of glucose, and increasing insulin sensitivity by increasing peripheral glucose uptake and utilization. It is well established that metformin inhibits mitochondrial complex I activity, and it has since been generally postulated that its potent antidiabetic effects occur through this mechanism.

Uses: Metformin is indicated for the management of type 2 diabetes in adults as an adjunct to diet and exercise to improve glycemic control as monotherapy.

## Thiazolidinediones

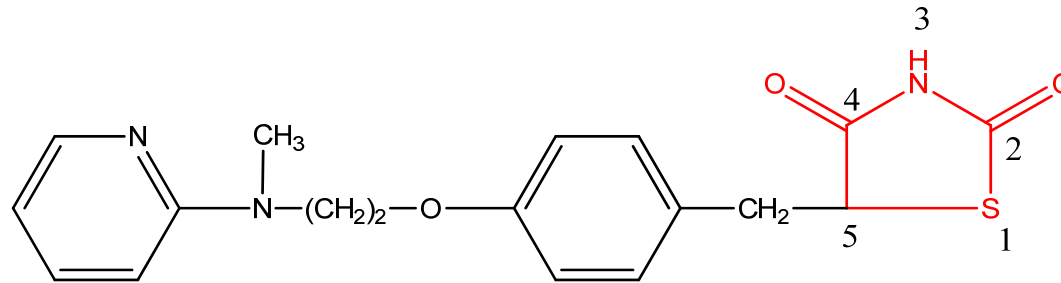
### Ciglitazone



**MOA:** Ciglitazone shows its antidiabetic effect by acting as an agonist at the nuclear peroxisome proliferator-activated receptor-gamma (PPAR-gamma) receptor.

**Uses:** It is indicated for the management of type 2 diabetes in adults as an adjunct to diet and exercise to improve glycemic control as monotherapy.

## Rosiglitazone



**MOA:** Rosiglitazone shows its antidiabetic effect by acting as an agonist at the nuclear peroxisome proliferator-activated receptor-gamma (PPAR-gamma) receptor.

**Uses:** It is indicated for the management of type 2 diabetes in adults as an adjunct to diet and exercise to improve glycemic control as monotherapy.