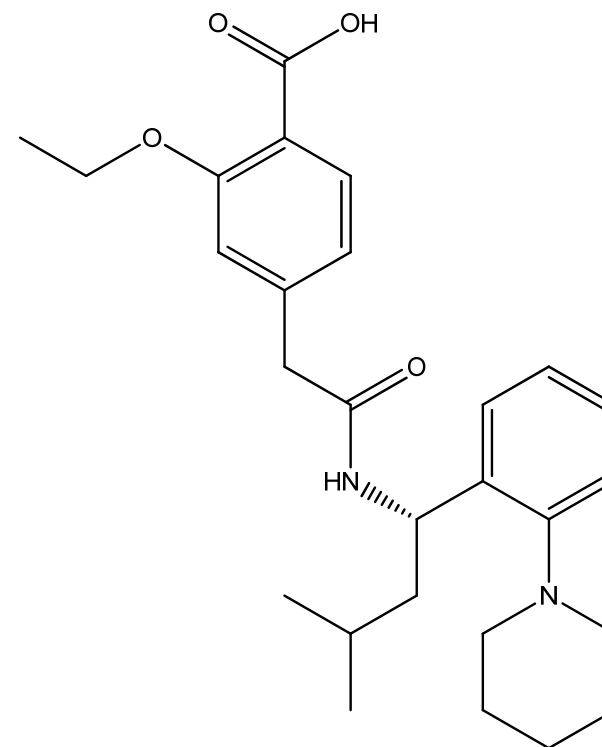


➤ Meglitinides

Repaglinide

MOA: It belongs to the meglitinide class of short-acting insulin secretagogues, which act by binding to β cells of the pancreas to stimulate insulin release. Repaglinide has no effect on insulin release in the absence of glucose.

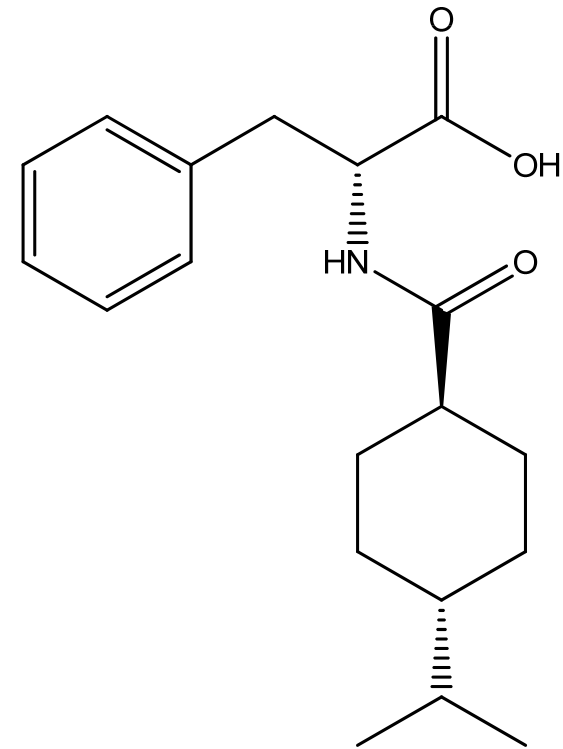
Uses: As an adjunct to diet and exercise to improve glycemic control in adults with type 2 diabetes mellitus.



Nateglinide

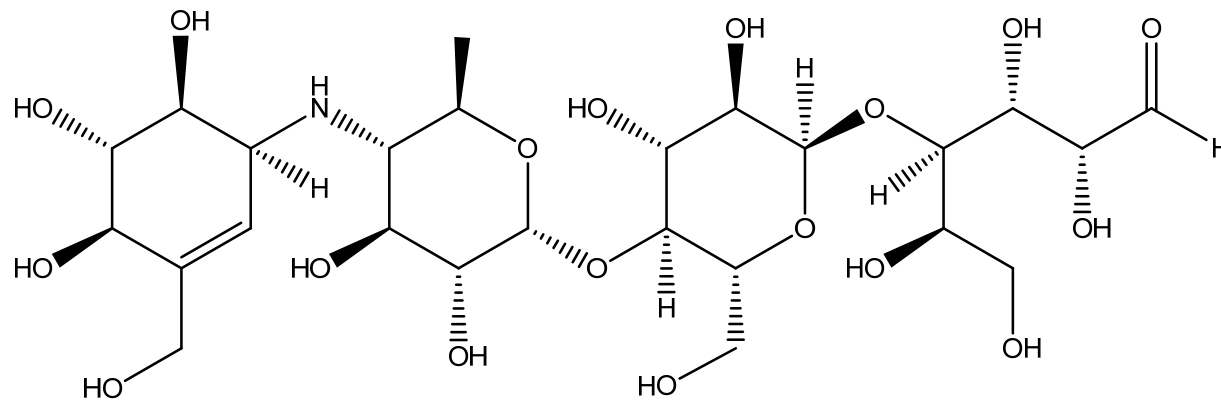
MOA: It belongs to the meglitinide class of short-acting insulin secretagogues, which act by binding to β cells of the pancreas to stimulate insulin release. Nateglinide has no effect on insulin release in the absence of glucose.

Uses: As an adjunct to diet and exercise to improve glycemic control in adults with type 2 diabetes mellitus.



➤ Glucosidase inhibitors

Acarbose

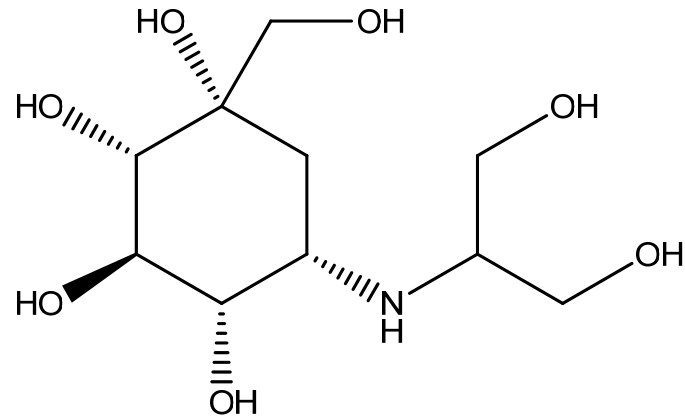


MOA: An inhibitor of alpha glucosidase that retards the digestion and absorption of carbohydrates in the small intestine and hence reduces the increase in blood-glucose concentrations after a carbohydrate load.

Acarbose reversibly bind to pancreatic alpha-amylase and membrane-bound intestinal alpha-glucoside hydrolases. These enzymes inhibit hydrolysis of complex starches to oligosaccharides in the lumen of the small intestine and hydrolysis of oligosaccharides, trisaccharides, and disaccharides to glucose and other monosaccharides in the brush border of the small intestine.

Uses: For treatment and management of diabetes type II .

Voglibose



MOA: An inhibitor of alpha glucosidase that retards the digestion and absorption of carbohydrates in the small intestine and hence reduces the increase in blood-glucose concentrations after a carbohydrate load.

It reversibly bind to pancreatic alpha-amylase and membrane-bound intestinal alpha-glucoside hydrolases. These enzymes inhibit hydrolysis of complex starches to oligosaccharides in the lumen of the small intestine and hydrolysis of oligosaccharides, trisaccharides, and disaccharides to glucose and other monosaccharides in the brush border of the small intestine.

Uses: For treatment and management of diabetes type II .