

Phylum Mollusca



Dr. Saritha S

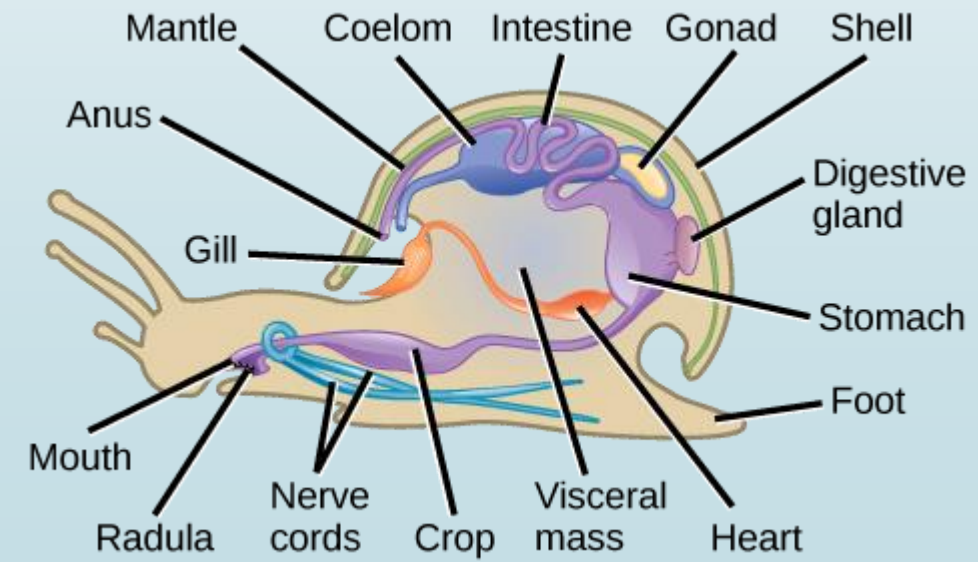
Asst. Professor


School of Fisheries

CUTM, Paralakhemundi

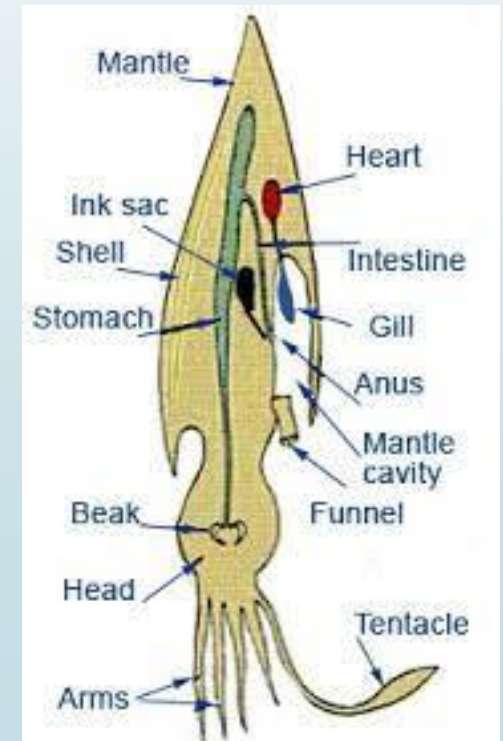
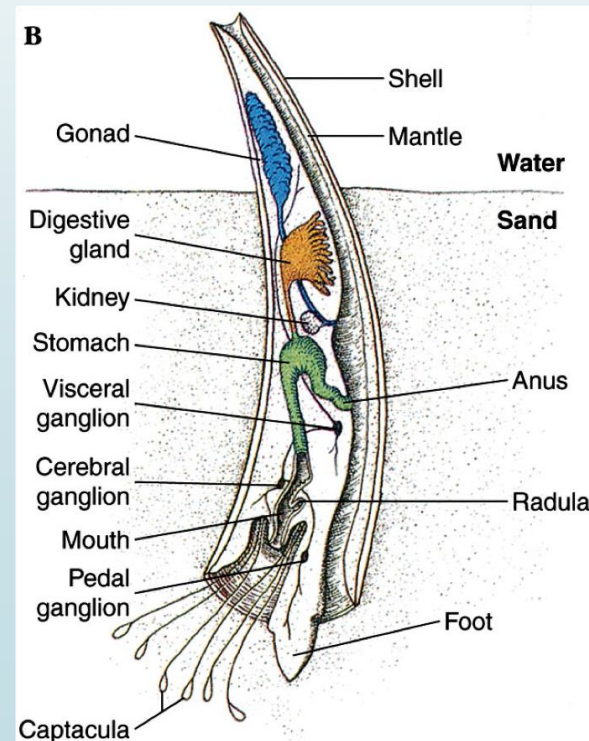
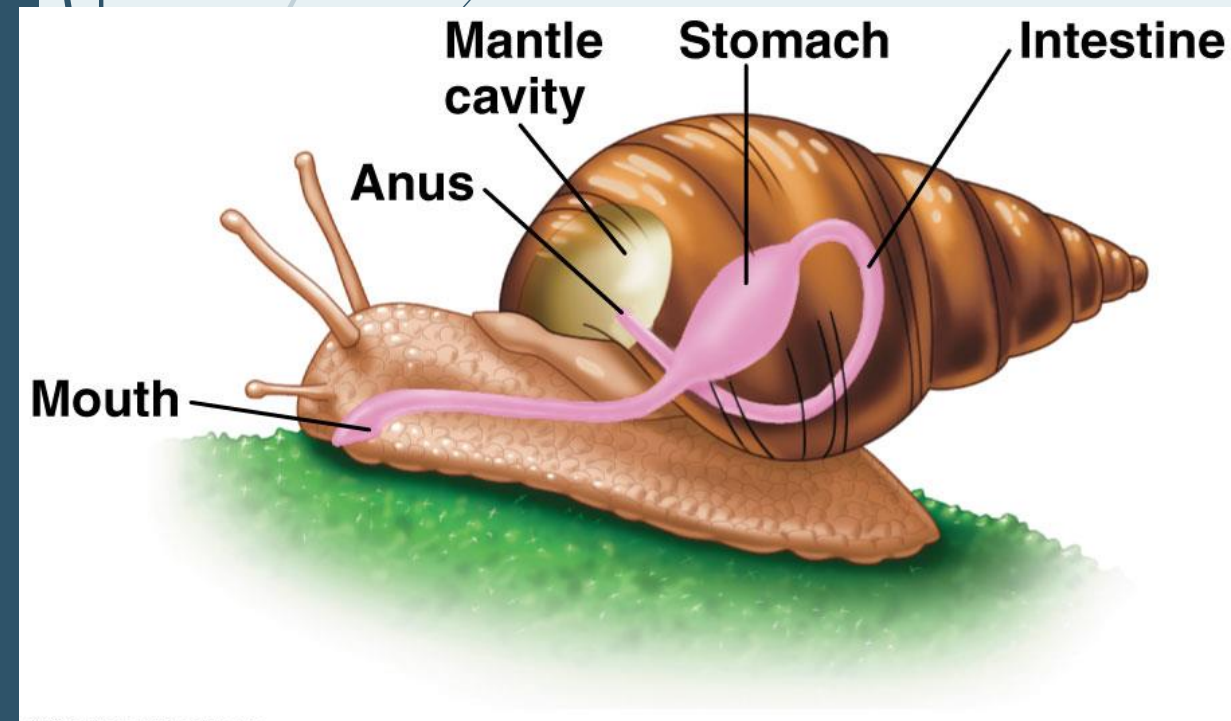
External morphology

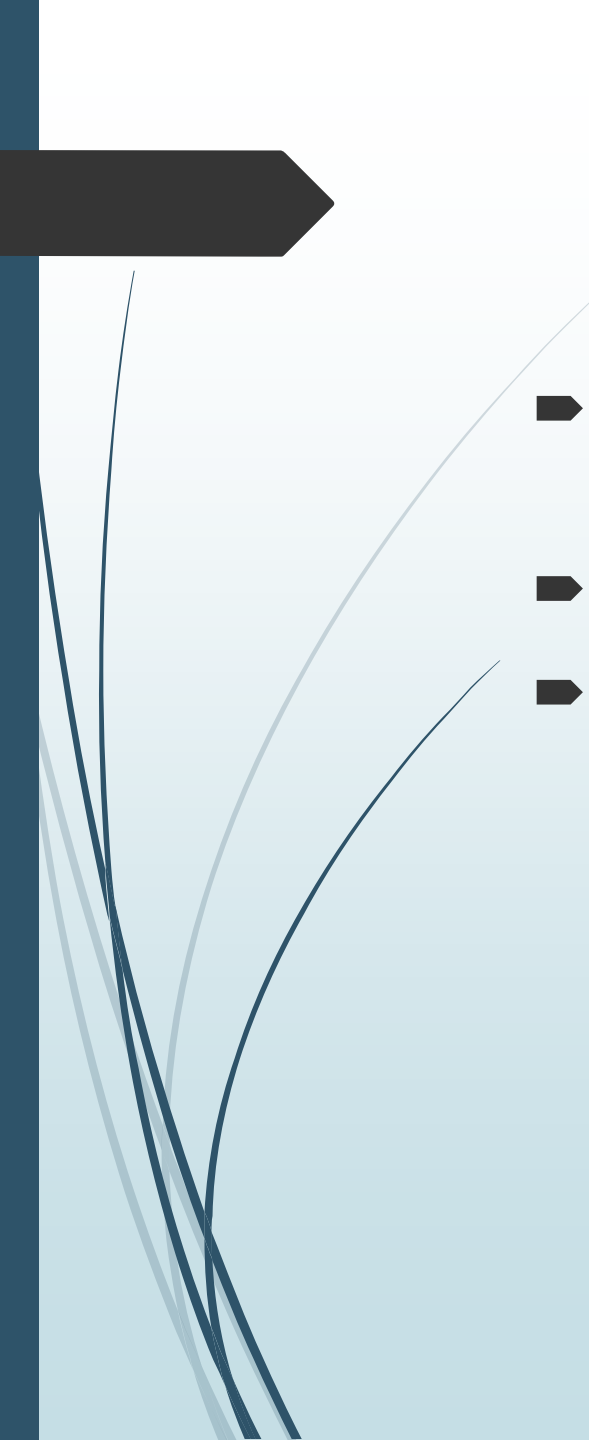
- Molluscs are essentially aquatic, mostly marine, few freshwater and some terrestrial forms.
- The body is soft, unsegmented, bilaterally symmetrical and consists of head, foot, mantle and visceral mass.
- Body is commonly protected by an exoskeleton calcareous shell of one or more pieces, secreted by the mantle.
- Head is distinct, bearing the mouth and provided with eyes, tentacles and other sense-organs excel: the Pelecypoda (clam) and Scaphopoda (tusk shell).



- 
- Mollusca (mo-LUS-ka) is derived from the Latin word molluscus
 - Which means soft.
 - Soft-bodied invertebrate, usually wholly or partly enclosed in a calcium carbonate shell secreted by a soft mantle covering the body
 - **Linnaeus (1758)** coined the name of this phylum

- Ventral body wall is modified into a muscular flat or plough-like surface, the foot which is variously modified for creeping, burrowing and swimming.
- Mantle or pallium is a fold of body wall that leaves between itself and the main body mass, the mantle cavity.
- Body cavity is haemocoel.
- Digestive tract is simple with an anterior mouth and posterior anus but in gastropods, scaphopods, and cephalopods the intestine becomes U-shaped bringing the anus to an anterior position.



- 
- Pharynx contains a rasping organ the radula except in Pelecypoda (Bivalvia).
 - Sexes usually separate (dioecious) but some are hermaphroditic.
 - Fertilization is external or internal.



Class

1. Aplacophora
 2. Monoplacophora
 3. Polyplacophora
 - 4. Bivalvia (Pelecypoda)**
 - 5. Gastropoda**
 - 6. Cephalopoda**
 7. Scaphopoda
- 