

Class Gastropoda

Dr. Saritha S
Asst. Professor
School of Fisheries
CUTM, Paralakhemundi



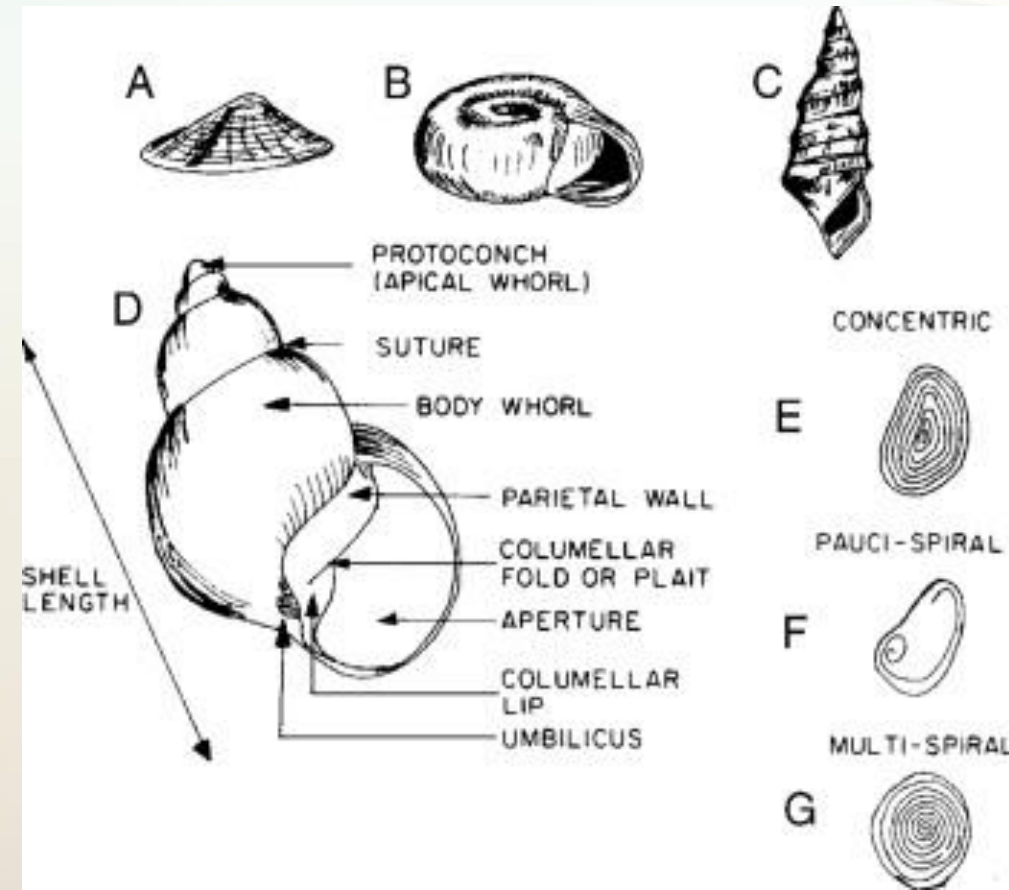
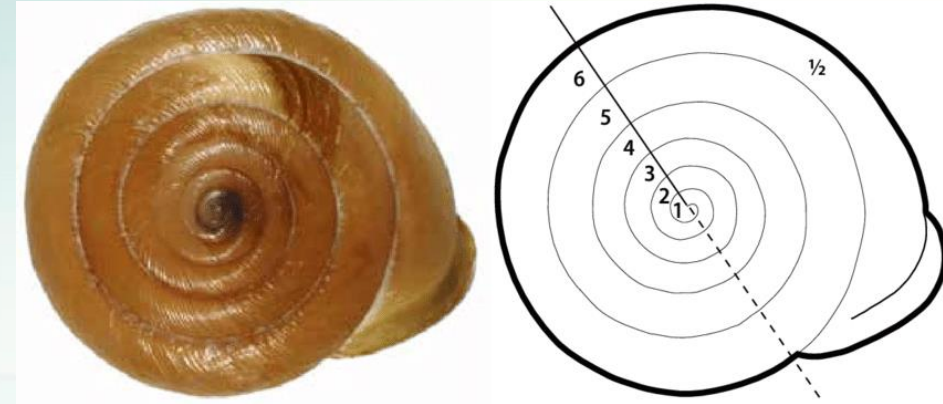
- Gastropoda- Stomach foot
- Extremely diverse and numerous group of animals
- Many are snails, but there are species without shells or without coiled shells
- Eg: Whelk
 - Slipper snail
 - Abalone



- ❖ Dominantly aquatic, some terrestrial and few parasitic
- ❖ Found mostly in marine conditions, also in fresh water conditions.
- ❖ Their key characteristic is the torsion around the perpendicular axis on the center of the foot that is modified for crawling.
- ❖ Head bearing eyes, tentacles and mouth
- ❖ These animals are asymmetrical and usually present a coiled shell
- ❖ Shell is univalved and it is calcareous
- ❖ The shell is strong and helps in the protection of animal

Spiral coiling, Whorl structure line and spire

- Univalved shell shows “spiral coiling”
- Each coil is called as a whorl
- Each whorl joins with other whorl along a line called “suture line”
- All the whorls except body chamber are called “spire”
- The angle formed at the top of the shell is called “spire angle”



Direction of coiling

- If the coiling is clockwise then the aperture will be right side-
“Dextral condition”
- If the coiling is anticlockwise, then the aperture will be left side-
“Sinistral condition”

