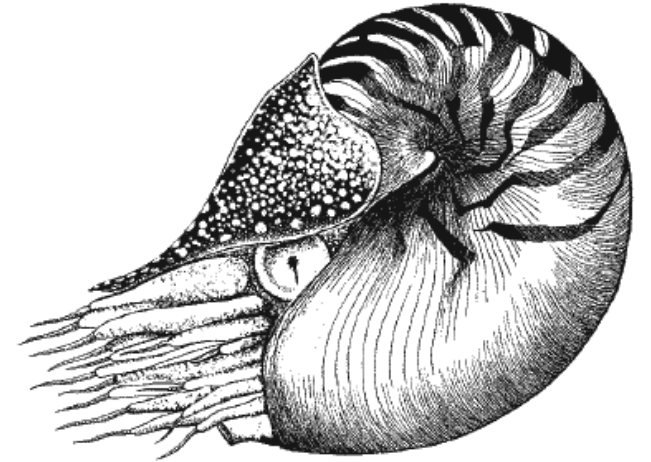
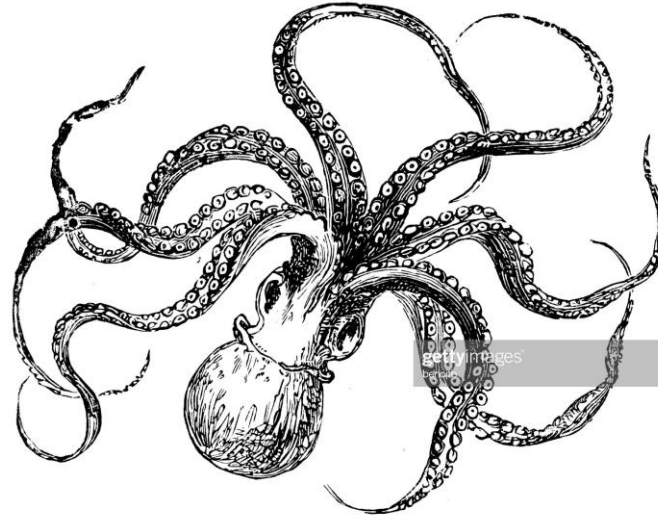
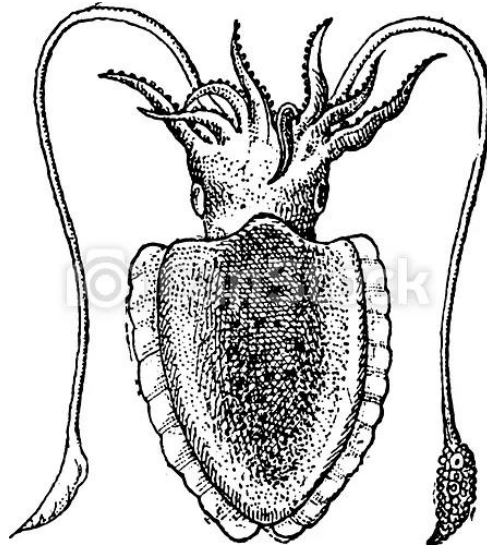
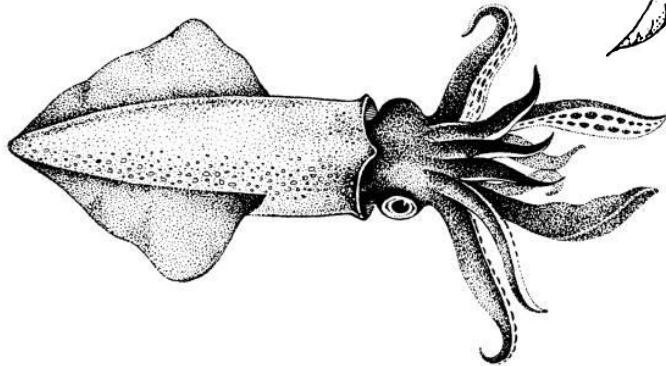


# Class Cephalopoda



© FAO FishFinder

**Dr. Saritha S**  
**Asst. Professor**  
**School of Fisheries**  
**CUTM, Paralakhemundi**

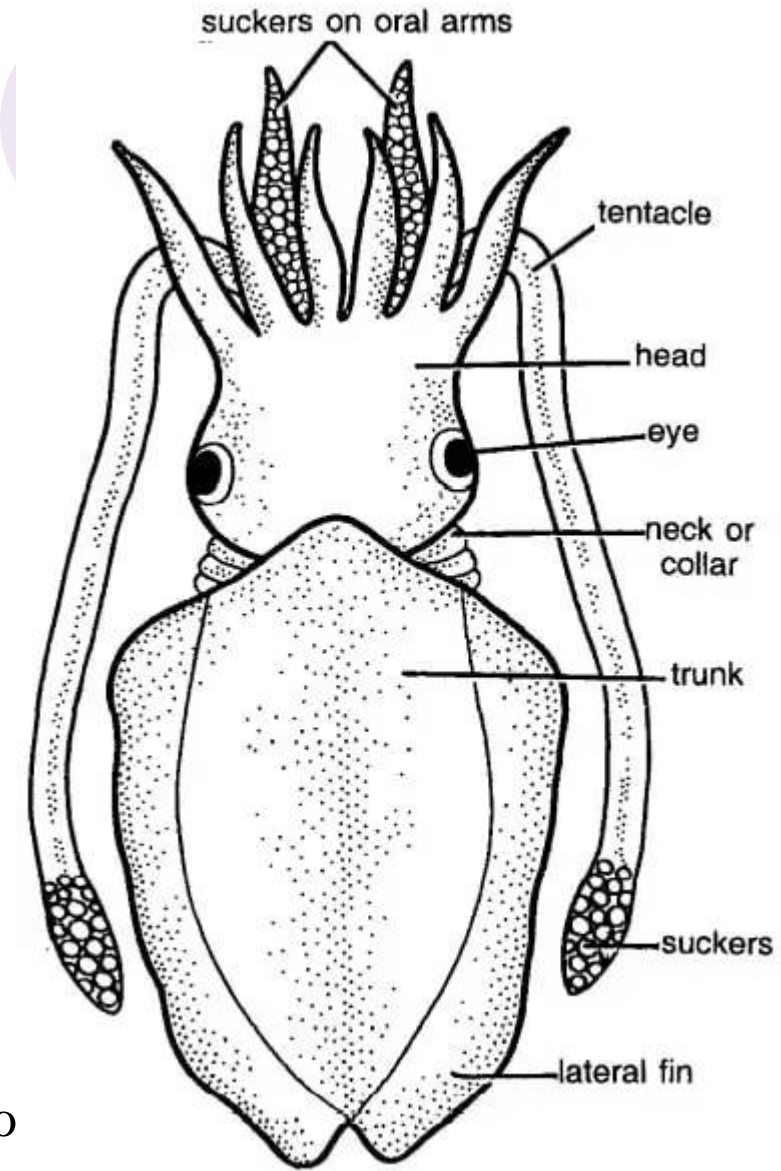
# Cephalopods



- ⦿ Among the entire invertebrate groups, cephalopods are considered as much advanced groups.
- ⦿ They are one of the most interesting groups of molluscs due to their high level of organization and the complex behavior patterns that they exhibit.
- ⦿ The cephalopods, whose living representatives include cuttlefish, squid, octopus, and nautilus.
- ⦿ These species are exclusively marine.
- ⦿ Adapted for a swimming existence, they are the most highly organised of all the molluscs and include the largest species of the invertebrate animals.

# Morphology

- ◉ Body may be globular or oval or arrow-shaped and have fins on the sides.
- ◉ Body divided into a head and trunk.
- ◉ Head bears a pair of large lateral eyes and mouth.
- ◉ Mouth bears jaws and radula.
- ◉ Trunk consists of symmetrical and uncoiled visceral mass.
- ◉ Foot altered into a series of large prehensile suckers bearing arms of tentacles encircling the mouth.
- ◉ Fin inserted laterally may surround the body (cuttlefish) or divided into two lateral fins placed more or less posteriorly (squid).



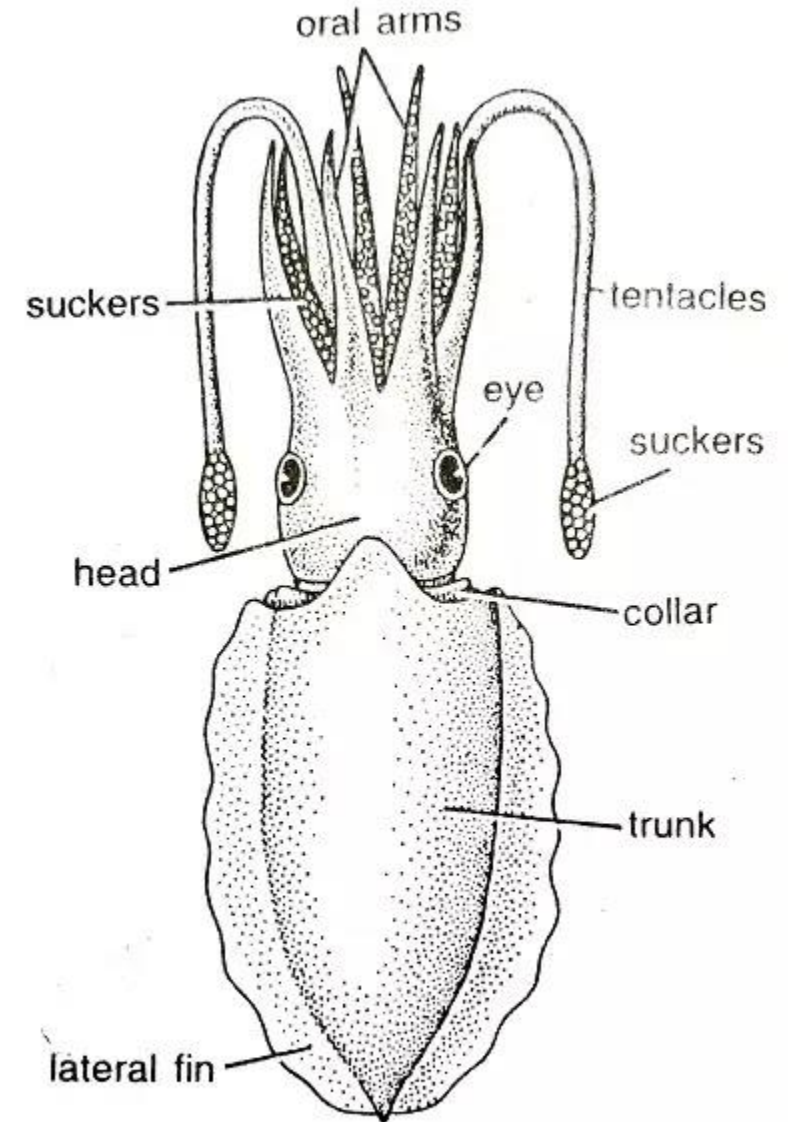
- ◉ Sub-class 1. Nautiloidea
  - ◉ *Nautilus* sp
- ◉ Sub-class 2. Coleoidea or Dibranchiata
  - ◉ Order 1. Sepioidea (cuttle fish)
  - ◉ Order 2. Teuthoidea (Squids)





# Cuttle fish

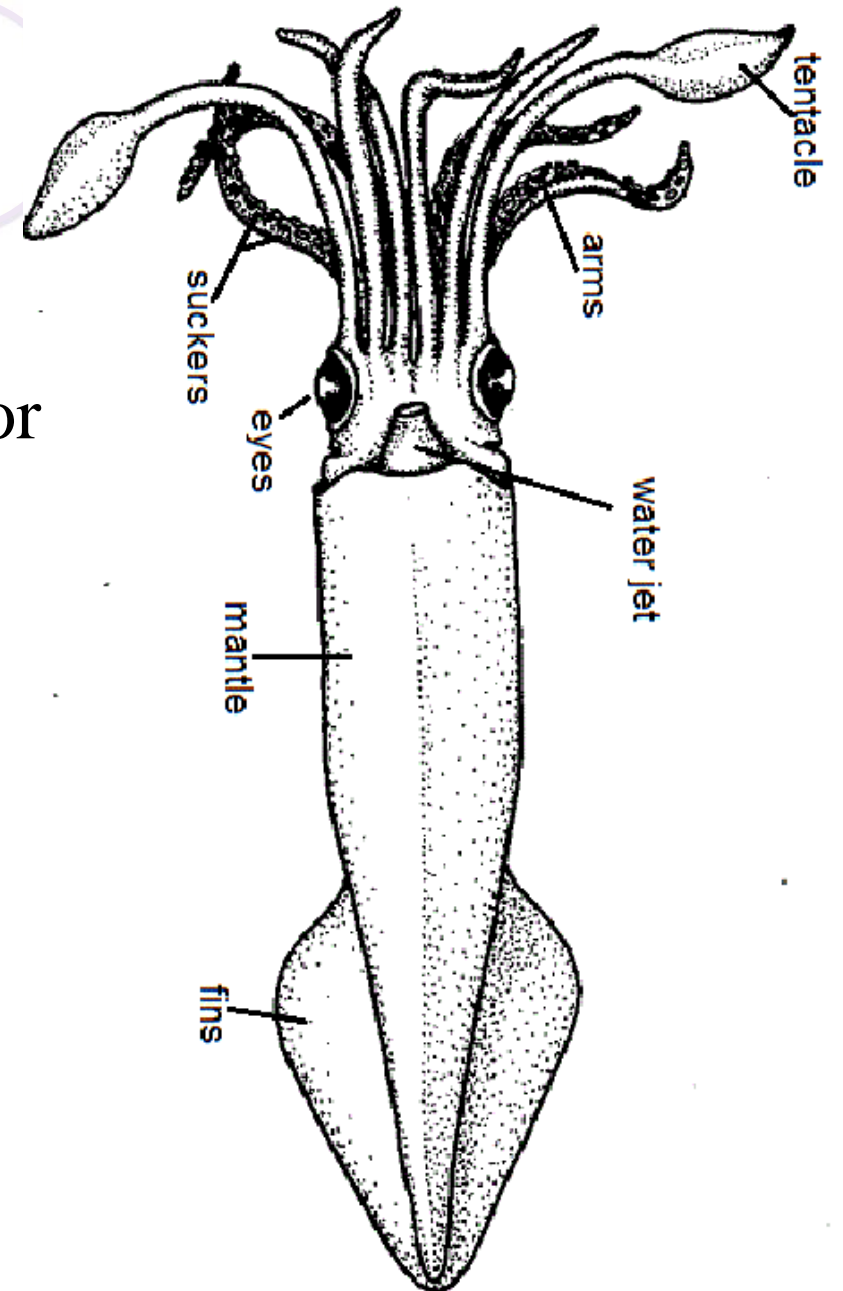
- ◉ Genus: *Sepia*
- ◉ Body either elongate and broad or very slender dorso-ventrally flattened.
- ◉ Fins marginal and narrow, extending all along mantle on either side.
- ◉ Internal shell (sepion) present.
- ◉ Head free from dorsal mantle.
  - ◉ *Sepia pharaonis*
  - ◉ *Sepia prashadi*
  - ◉ *Sepia aculeata*



*Sepia*

# Squid

- ◉ Genus: *Loligo*
- ◉ Internal shell (gladius or pen) chitinous, feather or rod-shaped.
- ◉ Eight sessile arms.
- ◉ Two tentacular arms
- ◉ Suckers stalked and with or without hooks.
- ◉ Finlobes fused posteriorly.
- ◉ Eyes either covered or open and without supplementary eyelid.





- ⊙ Sub-order **Myopsida** (Neretic squids): Eyes completely covered with a corneal membrane.
- ⊙ Sub-order **Oegopsida** (Oceanic squids): Eyes not covered with a corneal membrane and open to the surrounding medium.