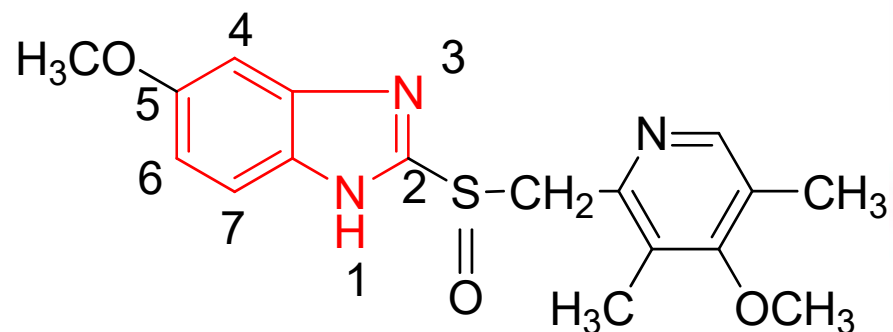


## Omeprazole

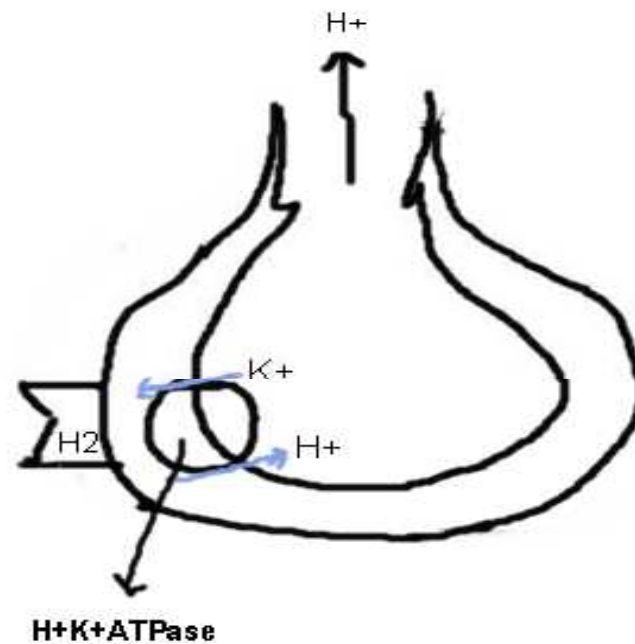


IUPAC: 5-methoxy-2- {[(4-methoxy-3,5-dimethylpyridin-2-yl)methyl]sulfinyl} -1H-benzimidazole

### Mode of action

Hydrochloric acid (HCl) secretion into the gastric lumen is a process regulated mainly by the H(+)/K(+)-ATPase of the proton pump.

Omeprazole inhibits secretion of acid from the gastric parietal cells by irreversibly inhibiting the enzyme H<sup>+</sup>-K<sup>+</sup> ATPase.

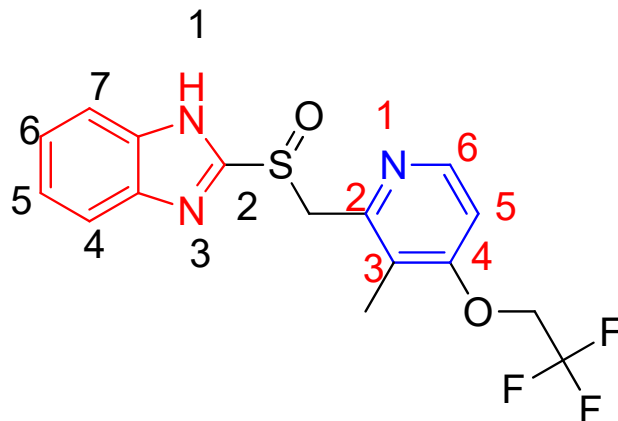


## Uses

Omeprazole is used in the treatment of duodenal ulcer, gastric ulcer, gastroesophageal reflux disease (GERD) and acid indigestion.

Omeprazole is also used in multi drug treatment protocol for eradication of *H. pylori* in treatment of peptic ulcer.

# Lansoprazole



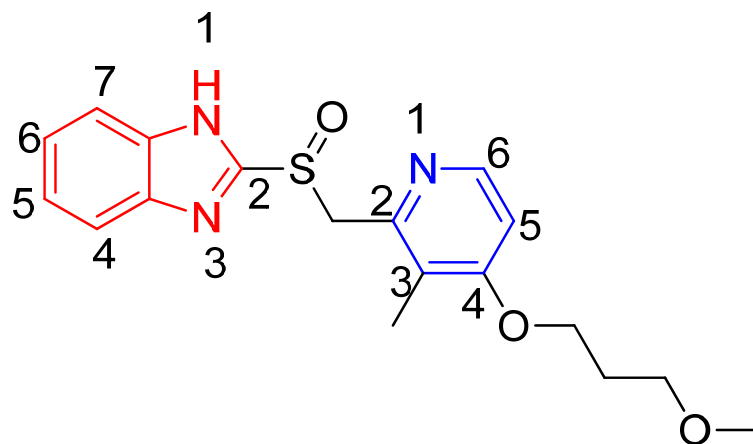
2-({[3-Methyl-4-(2,2,2-trifluoroethoxy)-2-pyridinyl]methyl}sulfinyl)-1H-benzimidazole

## Mode of action

Hydrochloric acid (HCl) secretion into the gastric lumen is a process regulated mainly by the H(+)/K(+)-ATPase of the proton pump. Omeprazole inhibits secretion of acid from the gastric parietal cells by irreversibly inhibiting the enzyme H<sup>+</sup>-K<sup>+</sup> ATPase.

**Uses:** Lansoprazole is used to reduce gastric acid secretion and is approved for short term treatment of active gastric ulcers, active duodenal ulcers and gastroesophageal reflux disease (GERD) and acid indigestion.

## Rabeprazole



IUPAC: 2-[[4-(3-methoxypropoxy)-3-methylpyridin-2-yl]methylsulfinyl]-1H-benzimidazole

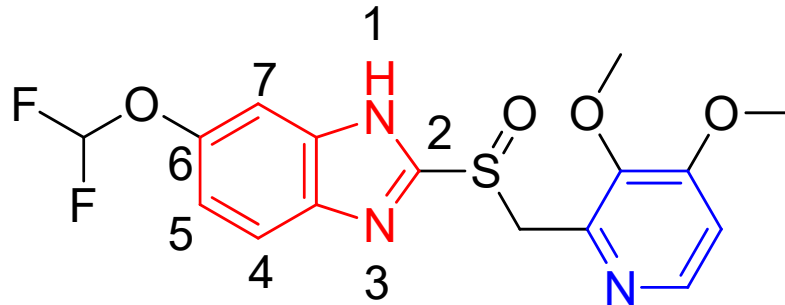
### Mode of action

Hydrochloric acid (HCl) secretion into the gastric lumen is a process regulated mainly by the  $H^{+}/K^{+}$ -ATPase of the proton pump.

Omeprazole inhibits secretion of acid from the gastric parietal cells by irreversibly inhibiting the enzyme  $H^{+}$ - $K^{+}$  ATPase.

**Uses:** Lansoprazole is used to reduce gastric acid secretion and is approved for short term treatment of active gastric ulcers, active duodenal ulcers and gastroesophageal reflux disease (GERD) and acid indigestion.

# Pantoprazole



IUPAC: 6-(difluoromethoxy)-2-[(3,4-dimethoxypyridin-2-yl)methylsulfinyl]-1*H*-benzimidazole

## Mode of action

Hydrochloric acid (HCl) secretion into the gastric lumen is a process regulated mainly by the H(+)/K(+)-ATPase of the proton pump.

Omeprazole inhibits secretion of acid from the gastric parietal cells by irreversibly inhibiting the enzyme H<sup>+</sup>-K<sup>+</sup> ATPase.

**Uses:** Lansoprazole is used to reduce gastric acid secretion and is approved for short term treatment of active gastric ulcers, active duodenal ulcers and gastroesophageal reflux disease (GERD) and acid indigestion.