



Centurion
UNIVERSITY
Shaping Lives...
Empowering Communities...

OCULAR DISEASE

CORNEAL DYSTROPHIES



Centurion
UNIVERSITY

*Shaping Lives...
Empowering Communities...*

Introduction

- Corneal dystrophies are inherited disorders in which the cells have some inborn defects due to which pathological changes may occur with passage of time leading to development of corneal haze in otherwise normal eyes that are free from inflammation or vascularization.
- There is no associated systemic disease.
- Dystrophies occur bilaterally, manifesting occasionally at birth,



Centurion
UNIVERSITY

Shaping Lives...
Empowering Communities...

CLASSIFICATION

- I. **Anterior dystrophies** (*superficial dystrophies*), primarily affecting **Epithelium and Bowman's layer**.
 1. Epithelial basement membrane dystrophy
 2. Reis-Buckler's dystrophy.
 3. Meesman's dystrophy.
 4. Recurrent corneal erosion syndrome.
 5. Stocker-Holt dystrophy.



Centurion
UNIVERSITY

Shaping Lives...
Empowering Communities...

Continue...

II. Stromal dystrophies

1. Granular (Groenouw's type I) dystrophy
2. Lattice dystrophy
3. Macular (Groenouw's type II) dystrophy
4. Crystalline (Schnyder's) dystrophy



Centurion
UNIVERSITY

Shaping Lives...
Empowering Communities...

Continue...

III. **Posterior dystrophies**, affecting primarily the corneal endothelium and Descemet's membrane.

1. Cornea guttata
2. Fuchs' epithelial-endothelial dystrophy (late hereditary endothelial dystrophy).
3. Posterior polymorphous dystrophy (of Schlichting).
4. Congenital hereditary endothelial dystrophy (CHED).



Centurion
UNIVERSITY

*Shaping Lives...
Empowering Communities...*

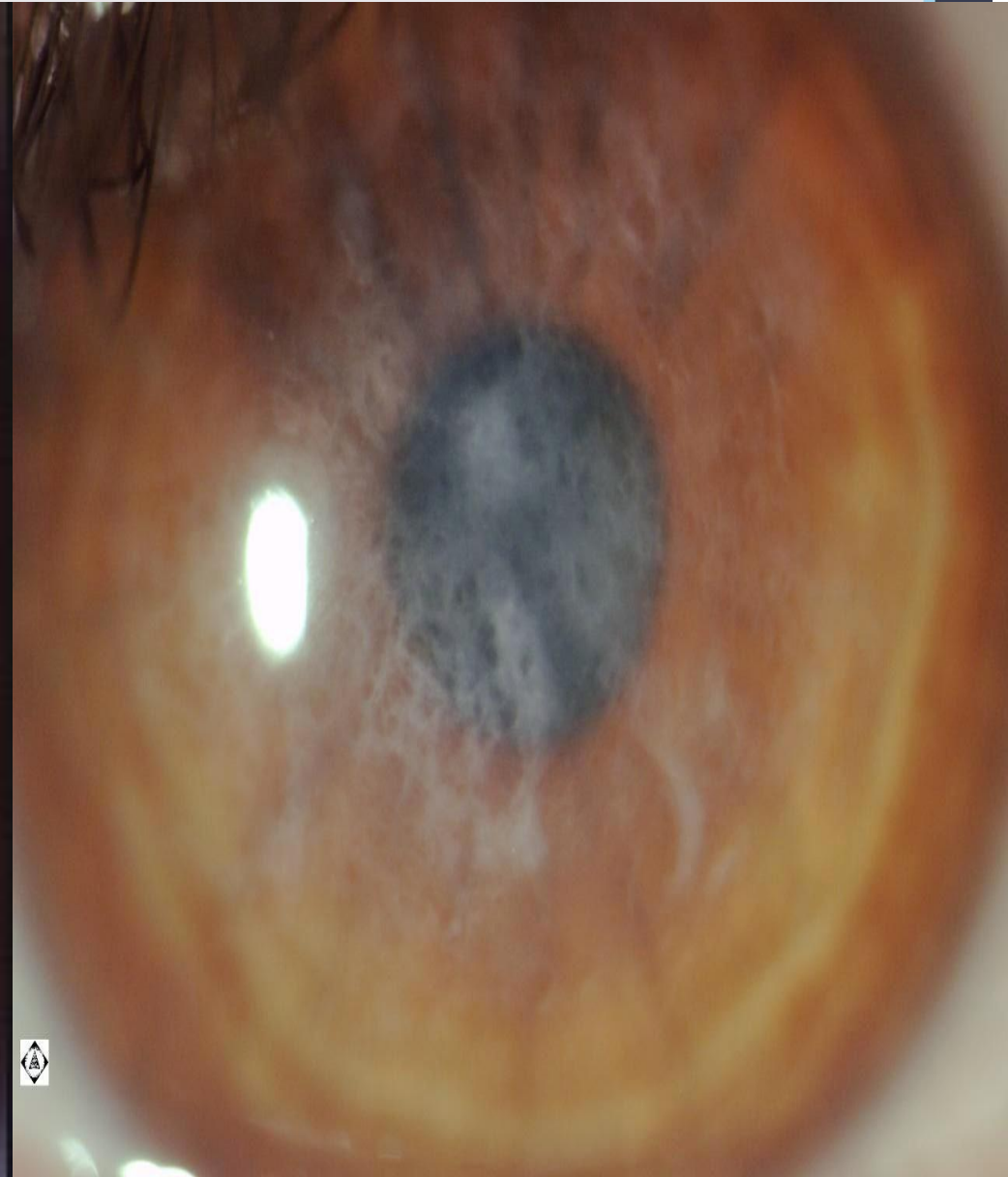
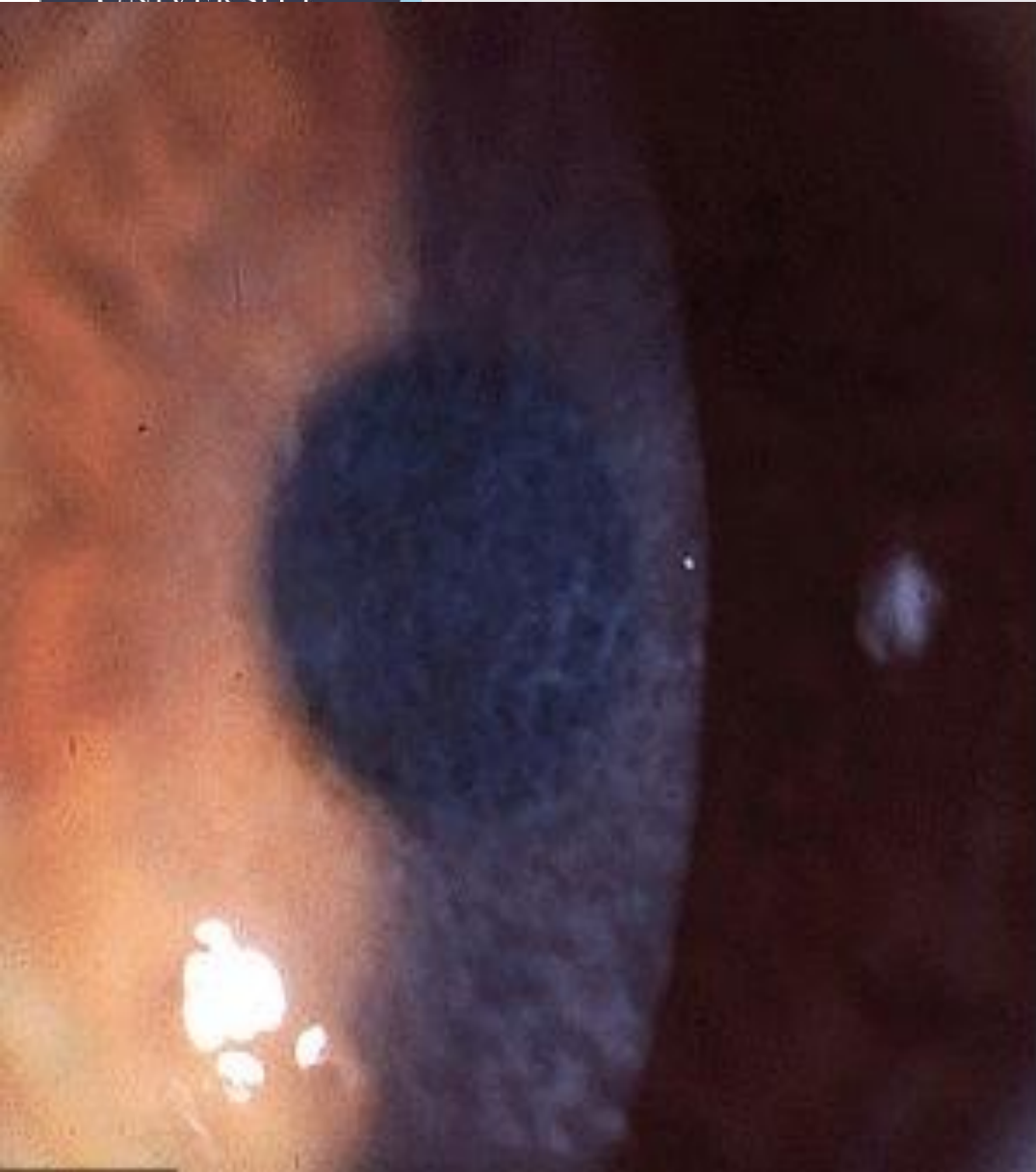
Reis-Buckler dystrophy

- Also known as ring-shaped dystrophy (due to the typical lesion) primarily involving the Bowman's layer is a progressive corneal dystrophy occurring in childhood.
- It has got autosomal dominant inheritance.
- Most patients get frequent attacks of recurrent corneal erosions that usually result in diffuse anterior scarring.



Centurion
UNIVERSITY

Reis-Buckler dystrophy





Centurion
UNIVERSITY

*Shaping Lives...
Empowering Communities...*

Treatment

- In early cases is same as that of recurrent corneal erosions, i.e. by patching.
- Patients ultimately need lamellar or penetrating keratoplasty.



Centurion
UNIVERSITY

Shaping Lives...
Empowering Communities...

Recurrent corneal erosion syndrome

- It is often described as a type of dystrophy that typically follows trauma to cornea by finger nail or any other sharp edge.
- It has been shown that a lack of basement membrane and hemidesmosomes in the area of involvement, is the basic underlying cause.

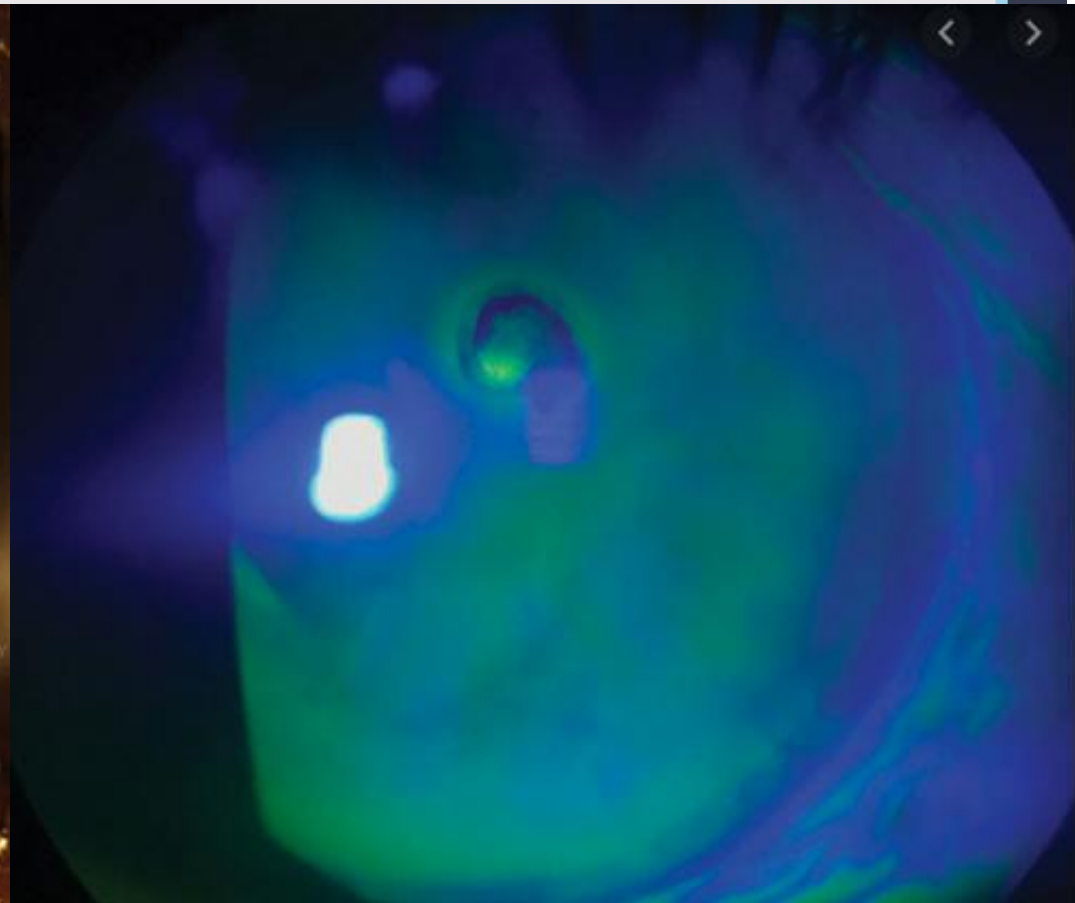
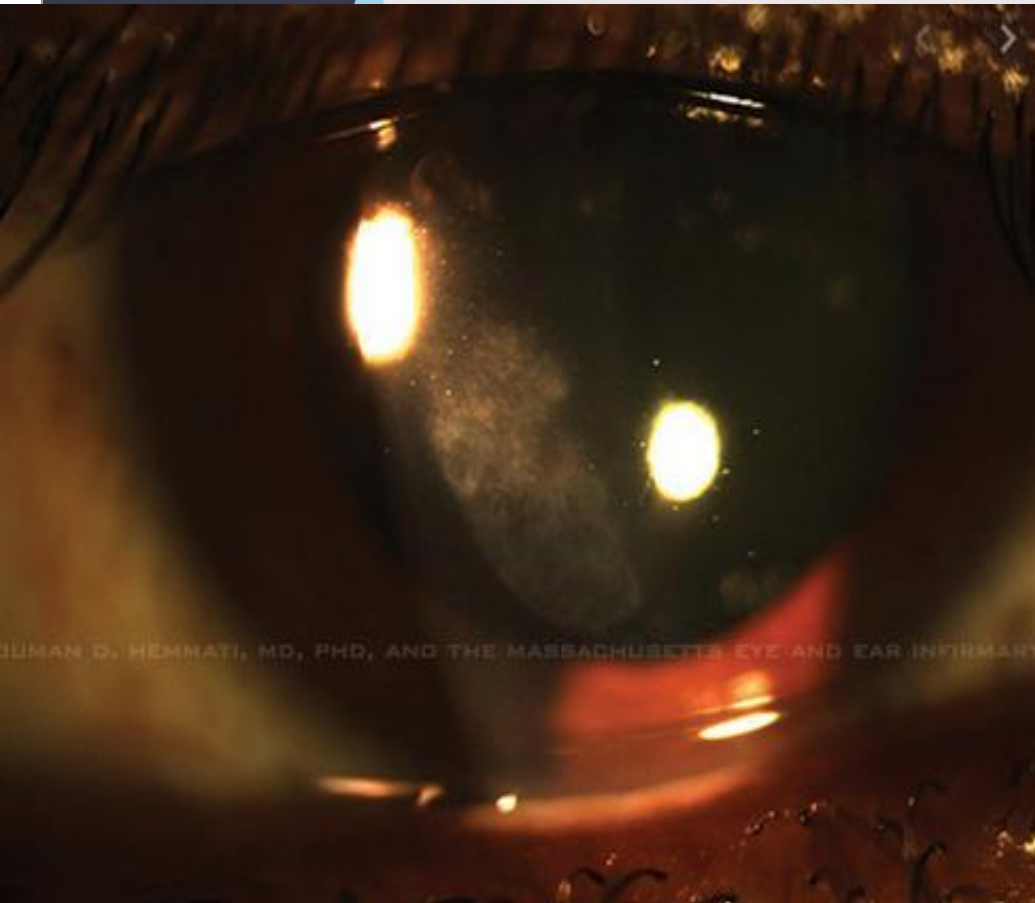


Centurion
UNIVERSITY

*Shaping Lives...
Empowering Communities...*

Continue...

- The condition is characterised by pain, photophobia, lacrimation and blurring of vision on awakening in the morning.



GHUMAN D. HEMMATI, MD, PHD, AND THE MASSACHUSETTS EYE AND EAR INFIRMARY



Centurion
UNIVERSITY

*Shaping Lives...
Empowering Communities...*

Treatment

- It consists of patching with plain ointment for 1-2 days.
- Hypertonic saline drops or ointment decrease attack of erosions by reducing epithelial oedema.
- Severe cases may be treated by scraping the whole epithelium followed by pressure patching.



Centurion
UNIVERSITY

*Shaping Lives...
Empowering Communities...*

Granular dystrophy

- Also known as 'Groenouw type I, is an autosomal dominant dystrophy characterised by milky-granular hyaline deposits in anterior stroma.
- Intervening stroma is clear.

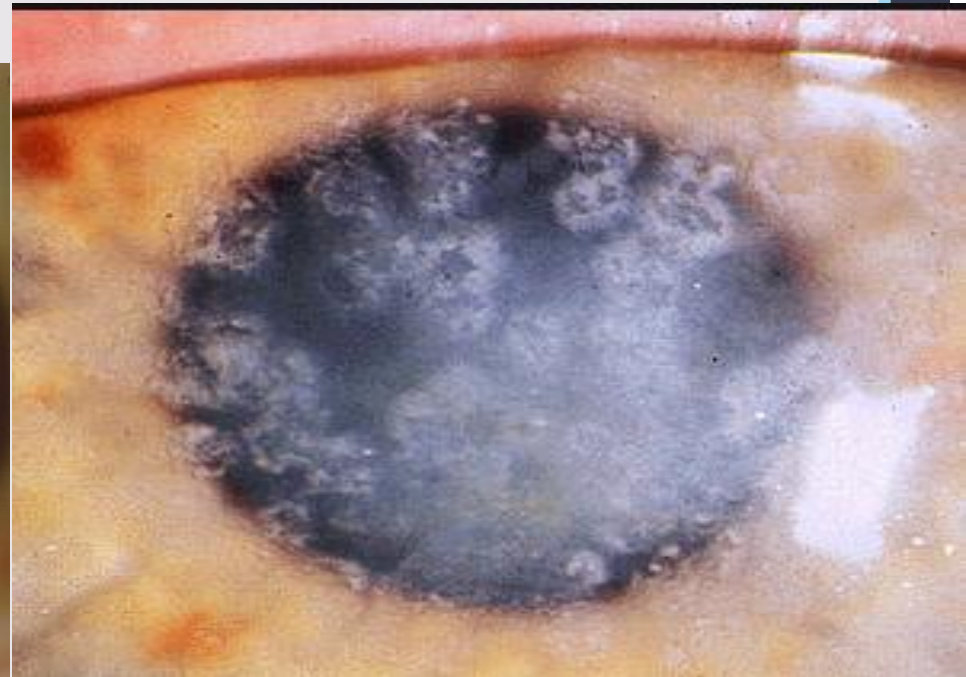


Centurion
UNIVERSITY

*Shaping Lives...
Empowering Communities...*

Continue...

- The condition developing in first decade of life is slowly progressive and usually asymptomatic.
- Occasionally visual acuity may be severely impaired, requiring keratoplasty.



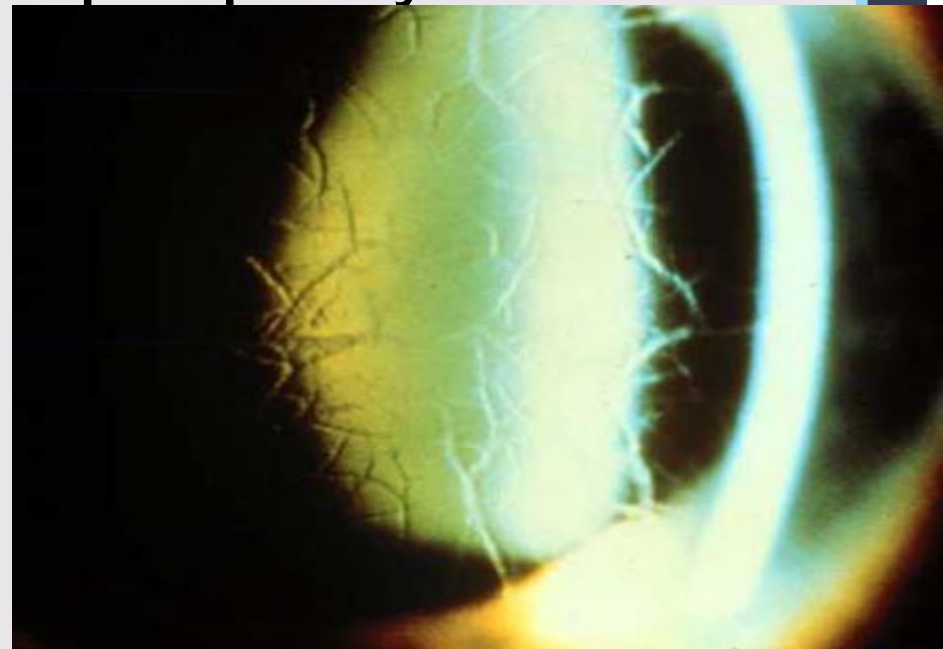


Centurion
UNIVERSITY

Shaping Lives...
Empowering Communities...

Lattice dystrophy

- Also known as '*Biber-Haab-Dimmer dystrophy*'. It is an autosomal dominant disease characterised by branching spider-like amyloid deposits forming an irregular lattice work in the corneal stroma, sparing the periphery.





Centurion
UNIVERSITY

*Shaping Lives...
Empowering Communities...*

Continue...

- It appears at the age of 2 years, but the occurrence of recurrent erosions and progressive clouding of central cornea is apparent by the age of 20 years.
- Soon, visual acuity is impaired.
- Usually penetrating keratoplasty is required by the age of 30- 40 years.



Centurion
UNIVERSITY

*Shaping Lives...
Empowering Communities...*

Macular dystrophy

- It is an autosomal recessive dystrophy characterised by appearance of dense grey opacity in the central cornea.
- The condition results due to accumulation of mucopolysaccharides owing to a local enzyme deficiency.



Centurion
UNIVERSITY

*Shaping Lives...
Empowering Communities...*

Continue...

- It occurs in childhood (5 to 10 years) and leads to marked defective vision in early life, which usually requires penetrating keratoplasty.



Centurion
UNIVERSITY

*Shaping Lives...
Empowering Communities...*

Cornea Guttata of vogt

- This condition is characterised by drop-like excrescences involving the entire posterior surface of Descemet's membrane.
- These are similar to Hassal- Henle bodies which represent the age change and are mainly found in the peripheral part.



Centurion
UNIVERSITY

Shaping Lives...
Empowering Communities...

Continue...

- Cornea guttata may occur independently or as a part of early stage of *Fuch's dystrophy*.
- *The condition usually occurs in old age and is more common in females than males.*
- It rarely affects the vision and hence treatment is usually not required.



Centurion
UNIVERSITY

*Shaping Lives...
Empowering Communities...*

Fuch's epithelial-endothelial dystrophy

- Fuchs dystrophy is frequently seen as a slowly progressive bilateral condition affecting females more than males, usually between fifth and seventh decade of life.
- Primary open angle glaucoma is its common association.



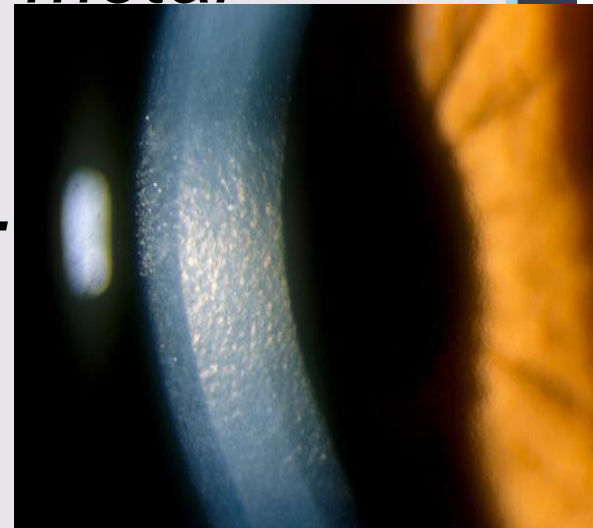


Centurion
UNIVERSITY

Shaping Lives...
Empowering Communities...

Clinical features

- *Stage of cornea guttata:* It is characterised by the presence of Hassal-Henle type of excrescences in the central part of cornea.
- A gradual increase of central guttae with peripheral spread and confluence gives rise to the so called '*beaten-metal*' appearance.
- *This stage is asymptomatic.*





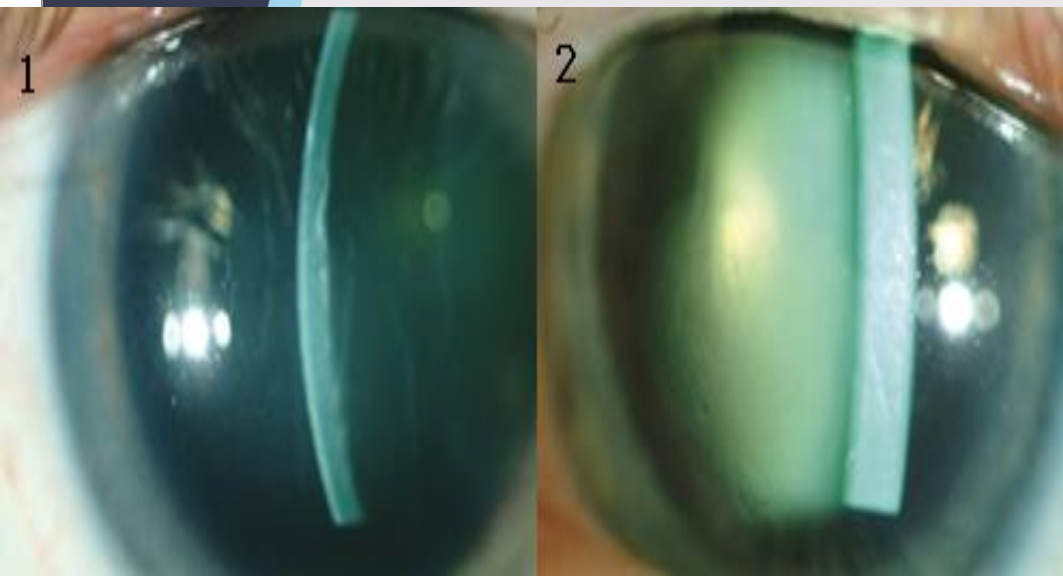
Centurion
UNIVERSITY

Shaping Lives...
Empowering Communities...

Continue...

2. **Oedematous stage or stage of endothelial** *decompensation is characterised by the occurrence of early stromal oedema and epithelial dystrophy.*

- Patients complains of blurring vision.



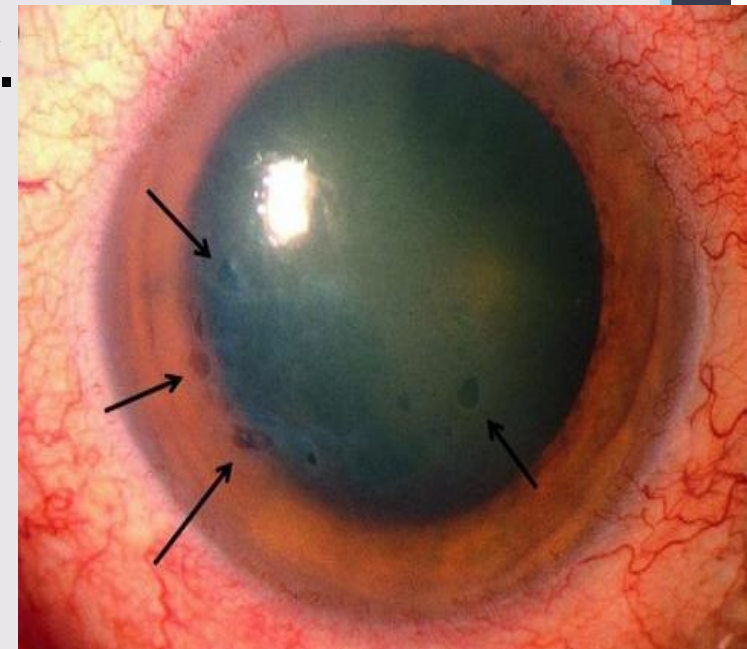


Centurion
UNIVERSITY

Shaping Lives...
Empowering Communities...

Continue...

3. Stage of bullous keratopathy. *This stage follows long-standing stromal oedema and is characterised by marked epithelial oedema with formation of bullae, which when rupture cause pain, discomfort and irritation with associated decreased visual acuity.*





Centurion
UNIVERSITY

Shaping Lives...
Empowering Communities...

Continue...

4. **Stage of scarring.** *In this stage epithelial bullae are replaced by scar tissue and cornea becomes opaque and vascularized.*
- The condition may sometimes be complicated by occurrence of secondary infection or glaucoma.





Centurion
UNIVERSITY

Shaping Lives...
Empowering Communities...

Treatment

1. *In early oedematous stage use of 5 percent sodium chloride (hypertonic saline) may be of some use.*
2. *Bandage soft contact lenses provide some relief from disturbing symptoms in bullous keratopathy stage.*
3. *Penetrating keratoplasty is the treatment of choice when the visual acuity is reduced markedly.*



Centurion
UNIVERSITY

*Shaping Lives...
Empowering Communities...*

Congenital hereditary endothelial dystrophy (CHED)

- This is a rare dystrophy associated with scanty or absent endothelial cells and thickened Descemet's membrane.
- The basic endothelial deficiency results in diffuse milky or ground glass opacification and marked thickening of corneal stroma.
- It may be inherited both dominantly and recessively.

