

See discussions, stats, and author profiles for this publication at: <https://www.researchgate.net/publication/281862416>

DIGESTIVE SYSTEM | Mahti Ahsan

Article *in* Juristat · September 2015

CITATIONS

0

READS

37,141

1 author:



Mahti Ahsan Ovi

Daffodil International University

7 PUBLICATIONS 0 CITATIONS

SEE PROFILE

Some of the authors of this publication are also working on these related projects:



Anthropometry | Nutritional Status and its Methods [View project](#)

DIGESTIVE SYSTEM

INTRODUCTION

Digestion

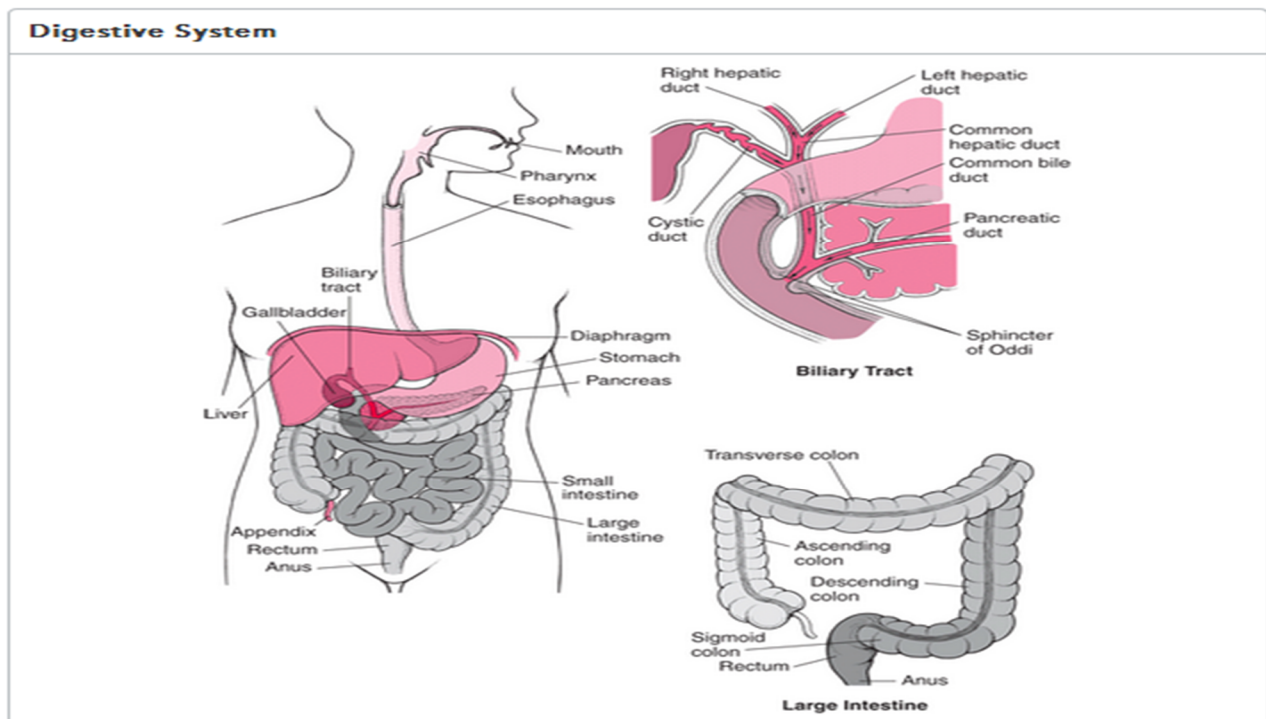
Definition: **Digestive system** is a demonic & Complex process in human body. The **digestive tract** starts at the mouth and ends at the anus. It is the breakdown of large insoluble food molecules which we eat. In the system the large insoluble food molecules breakdown into a small water soluble food molecules. So that they can be absorbed through the small intestine into blood. It is a process of turning food into the nutrients.

Purpose of digestion:

- 1) Supply Energy to the body for activity
- 2) For the growth of the body
- 3) For the repair of wear the body
- 4) For the reproduction and lactation.

Parts of digestive System:

There are mainly six parts in digestive system



- 1) Mouth or buccal cavity with tongue
- 2) Oropharynx
- 3) Oesophagus

- 4) Stomach
- 5) Small intestine
- 6) Large intestine

There are some other part in Small intestine & Large intestine

Small Intestine: the part of the intestine that runs between the stomach and the large intestine; the duodenum, jejunum, and ileum collectively.

Parts of Small Intestine

- a) Duodenum
- b) Jejunum & ileum

Large Intestine: the last part of the intestine which is wider and shorter than the small intestine, which consists of the cecum, colon, and rectum, and which absorbs water from the material left over from digestion and prepares the feces for release from the body

Parts of large intestine

- a) Caecum
- b) Ascending colon
- c) Transverse colon
- d) Descending colon
- e) Sigmoid colon
- f) Rectum
- g) Anal canal

Accessory parts of digestive system:

- 1) Teeth
- 2) Salivary gland- parotid, submandibular , sublingual
- 3) Liver
- 4) Pancreas
- 5) Gall bladder
- 6) Other digestive glands in the wall of the digestive tract

Summary: Digestion is the process by which the gastrointestinal system retrieves important nutrients for the body and chemically changes the unused food into waste. Mastication, or the chewing of food in the mouth, is the first step of digestion. Saliva initiates digestion and changes the chewed food into a soft mass, or bolus. Saliva makes the bolus slippery, making it easier to be swallowed and slide down the back of the throat and esophagus. The bolus passes through the esophageal sphincter before it enters the stomach. Inside the stomach, hydrochloric acid is released, breaking down large food molecules into smaller ones and liquefying the bolus. The liquefied bolus, now called chyme, then passes through the pyloric sphincter and enters the duodenum, the first section of the small intestine. It is here that enzymes released from the pancreas, liver and gallbladder further breakdown chyme into elements that can be easily absorbed and used by the body. The small intestine is lined with a heavily folded inner mucosa and small fingerlike projections called villi. The villi enable digested food to enter the bloodstream. It is here, in the small intestine, where all nutrients and vitamins are absorbed. Chyme can travel through up to 20 feet of small intestine before it passes through the ileocecal valve to enter the large intestine. Very little digestion occurs in the large intestine. Undigested chyme that enters the large intestine is considered waste. The waste becomes more and more solid as it passes through the large intestine because water is continuously being reabsorbed from the waste. Waste collects in the rectum, or end of the large intestine, until the brain signals for it to be expelled from the body.