

Dymola Hands-on

"Electrical Transformer Design using Dymola" is a comprehensive process that involves using Dymola, a modeling and simulation software, to design and analyze the performance of electrical transformers. Here are some descriptive notes on the various aspects of this process:

Introduction:

The design of electrical transformers aims to transfer electrical energy efficiently and safely between different voltage levels.

Dymola, a multi-domain modeling and simulation tool, provides a platform to simulate the behavior of transformers and optimize their design.

Transformer Modeling:

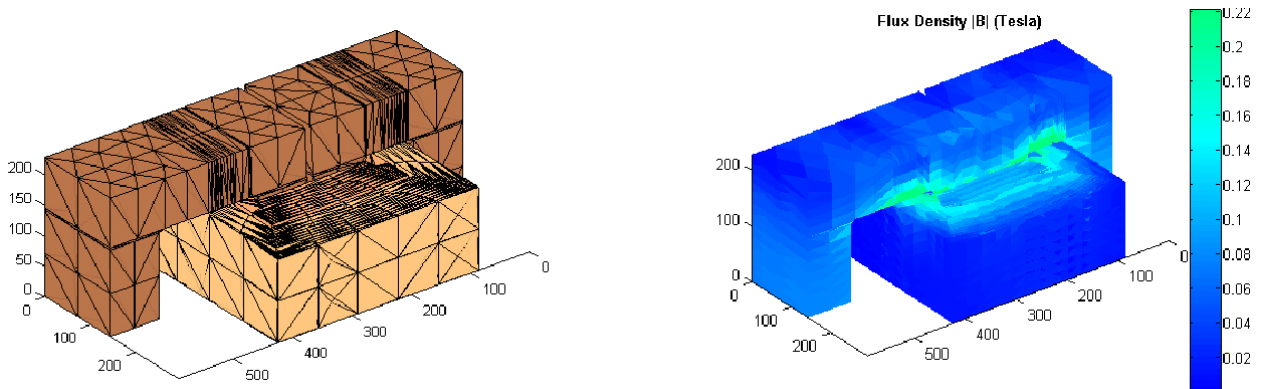
Dymola enables the creation of mathematical models that represent the electrical, magnetic, and thermal characteristics of transformers.

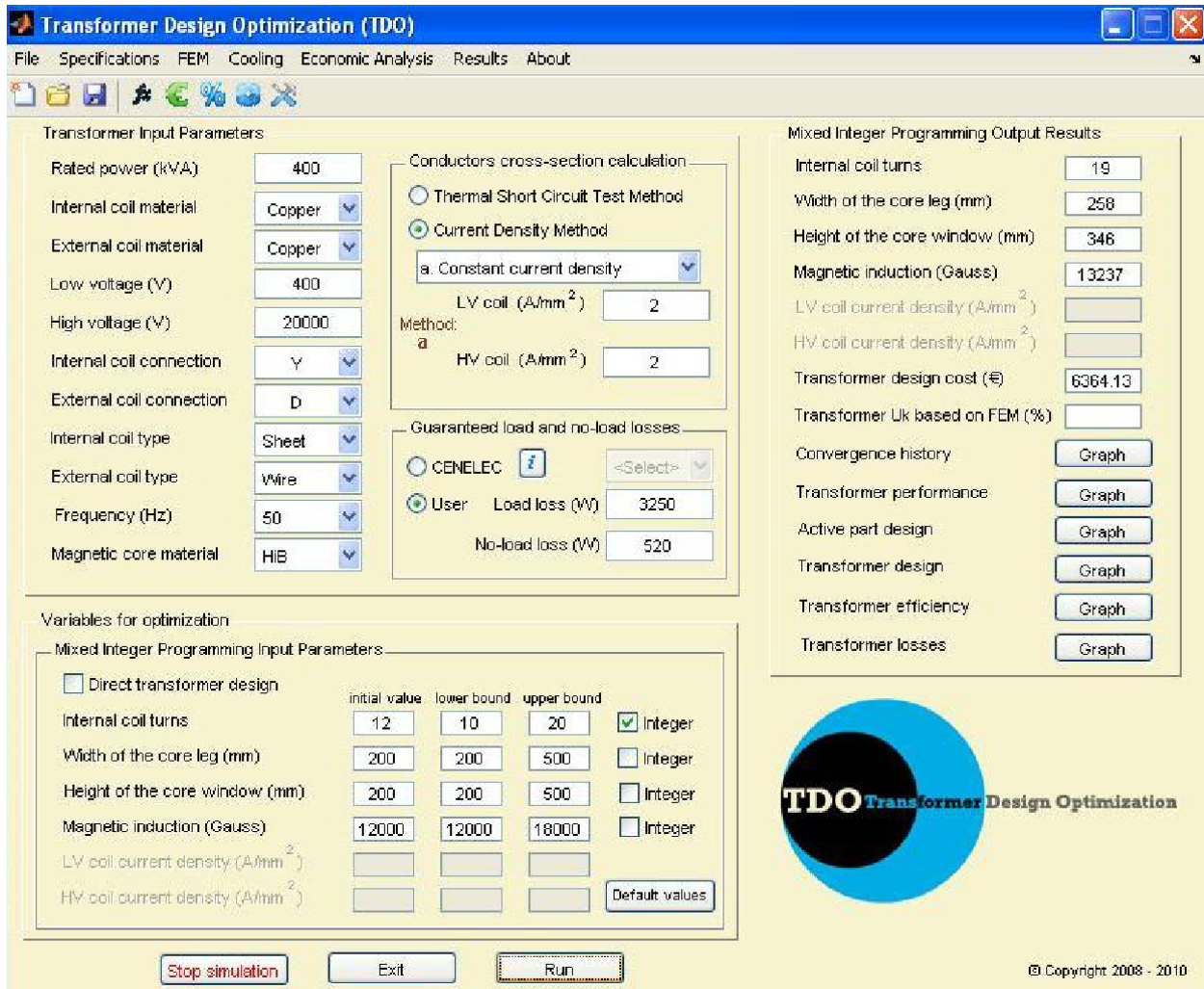
The models consider parameters such as the transformer's geometry, core material properties, winding configurations, and electrical losses.

Core Design:

Dymola allows for the analysis and optimization of transformer cores, which play a crucial role in magnetic flux induction and minimizing losses.

Core design involves determining the appropriate core material, core shape, and size to achieve efficient magnetic coupling and reduce hysteresis and eddy current losses.





Winding Design:

Dymola facilitates the modeling and analysis of transformer windings, including primary and secondary coils.

The winding design involves determining the appropriate wire size, insulation materials, and turn configurations to achieve the desired voltage transformation ratio and minimize resistive losses.

Electrical Performance Analysis:

Dymola enables the simulation of the electrical performance of transformers under various operating conditions, such as different load levels and voltage inputs.

The software can assess important performance parameters, including voltage regulation, efficiency, and short-circuit behavior, to ensure the transformer meets design requirements.

Thermal Analysis:

Dymola allows for thermal analysis to assess the temperature distribution within the transformer under different load conditions.

The software considers factors such as core and winding losses, cooling mechanisms, and ambient temperature to ensure the transformer operates within safe temperature limits.

Optimization:

Dymola's simulation capabilities support optimization techniques to refine transformer designs.

Parameters such as core dimensions, winding configurations, and cooling systems can be adjusted and optimized to improve efficiency, reduce losses, and meet specific design constraints.

Documentation and Reporting:

Throughout the transformer design process using Dymola, it is essential to document the modeling assumptions, simulation results, and design iterations.

Dymola provides tools to generate reports and visualizations, including graphs, diagrams, and tables, to effectively communicate the design outcomes.