



Centurion
UNIVERSITY

*Shaping Lives...
Empowering Communities...*

Domain

Smart Agriculture

Course

Management of high-value cut-flowers

Project topic

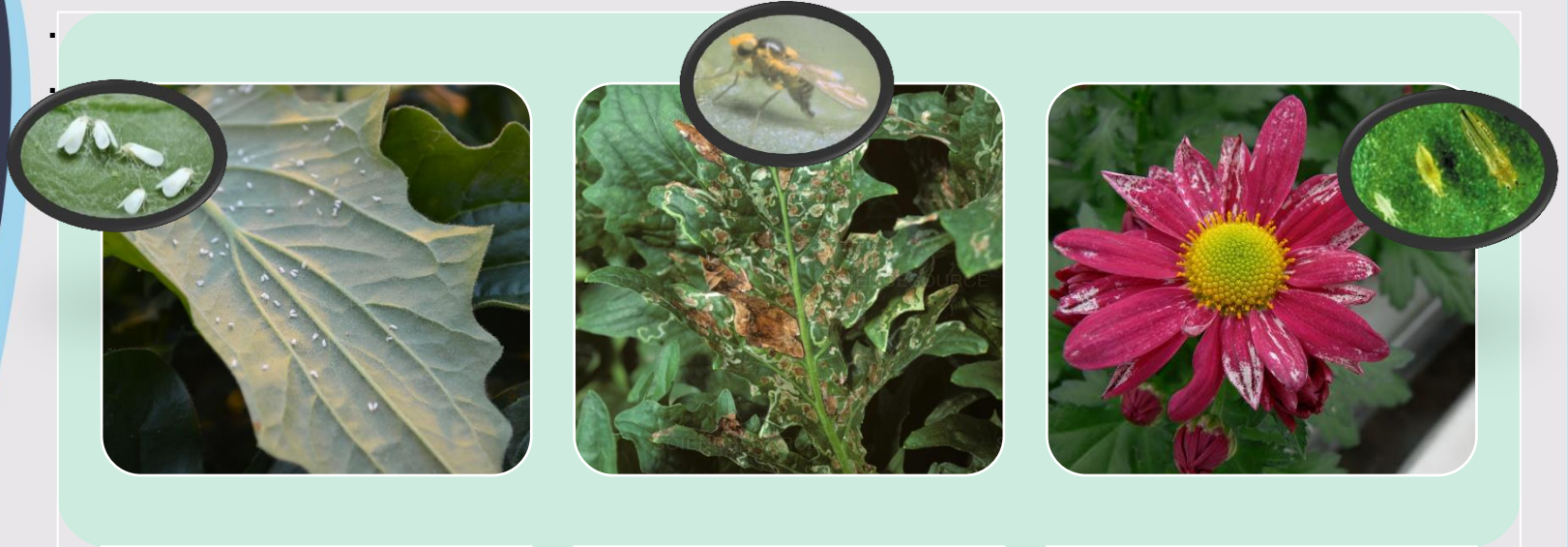
Pest-disease management of gerbera



Centurion
UNIVERSITY

*Shaping Lives...
Empowering Communities...*

Sucking pests



Whitefly attacks when climate is hot and dry. The insect feeds on the lower side of leaves, excrete large quantity of honey dew which leads to development of black sooty moulds on the leaves.

Leaf Miner causes white specks on leaves caused by the adult insects; however, white serpentine tunnels on leaves are caused by larvae.

Thrips cause white specks or stripes on ray florets; flower heads may be deformed. Silvery, greyish spots may occur on the leaves or brown spots may appear on leaf petioles/ mid-vein.



Centurion
UNIVERSITY

*Shaping Lives...
Empowering Communities...*

Management of sucking pest

Application of neem-based pesticides is also beneficial. Hanging of blue and yellow sticky trap inside polyhouse is also an effective method for controlling these pests.



These three sucking pests can be controlled by application of pesticides like:

Imidchloprid @ 0.2 ml/ litre of water or
Thiomethoxam @ 0.3 gram/ litre of water or
Dichlorovos @ 1ml/litre of water or
Acephate @ 1 gram/ litre of water



Centurion
UNIVERSITY

*Shaping Lives...
Empowering Communities...*

Red Mites

Red mites may harm a lot to gerbera. They suck the sap from lower sides of the leaves causing development of brown spots on lower surface of leaves resulting in marginal drying of leaves. Webbing on the flower petals are also noted.

Mites can be controlled by application of following pesticides.
Kelthane @ 1.5 ml / litre of water or
Abamectin @ 0.4 ml/ litre of water or
Fenazaquin @ 1 ml / litre of water or
Propergite @ 1ml / litre of water or
Milbemectin @ 0.5ml/ litre of water.

Affected leaf



Mite



Affected leaf





Centurion
UNIVERSITY

*Shaping Lives...
Empowering Communities...*

Powdery mildew

This fungal disease is characterized by the appearance of white powdery growth on the leaf lamina. In case of severe attack, leaves start curling.

Wettable Sulphur @ 1.5 gram can be sprayed to control the disease.

Otherwise fungicides like 1 gram or Mycobutanil 0.5 gram per litre of water can be sprayed.





Centurion
UNIVERSITY

*Shaping Lives...
Empowering Communities...*

Crown rot and root rot

These two diseases cause damage to gerbera. Crown of the plant becomes black. In severe attack younger leaves may drop and plants wilt. Root skin is easily removed.

These two diseases can be managed by applying following fungicides.

Fosetyl Aluminium @ 1.5g/litre of water or
Thiophanate- Methyl @ 1g/litre of water or
Copper oxychloride @ 4g/litre of water or
Copper hydroxide @ 1g/litre of water.





Centurion
UNIVERSITY

Shaping Lives...
Empowering Communities...

Alternaria leaf spot

Black circular **leaf spot** may develop on leaves. It's a fungal disease

The disease can be controlled by application of fungicides like Mancozeb 2.5 g or Benomyl 1g per litre of water.

