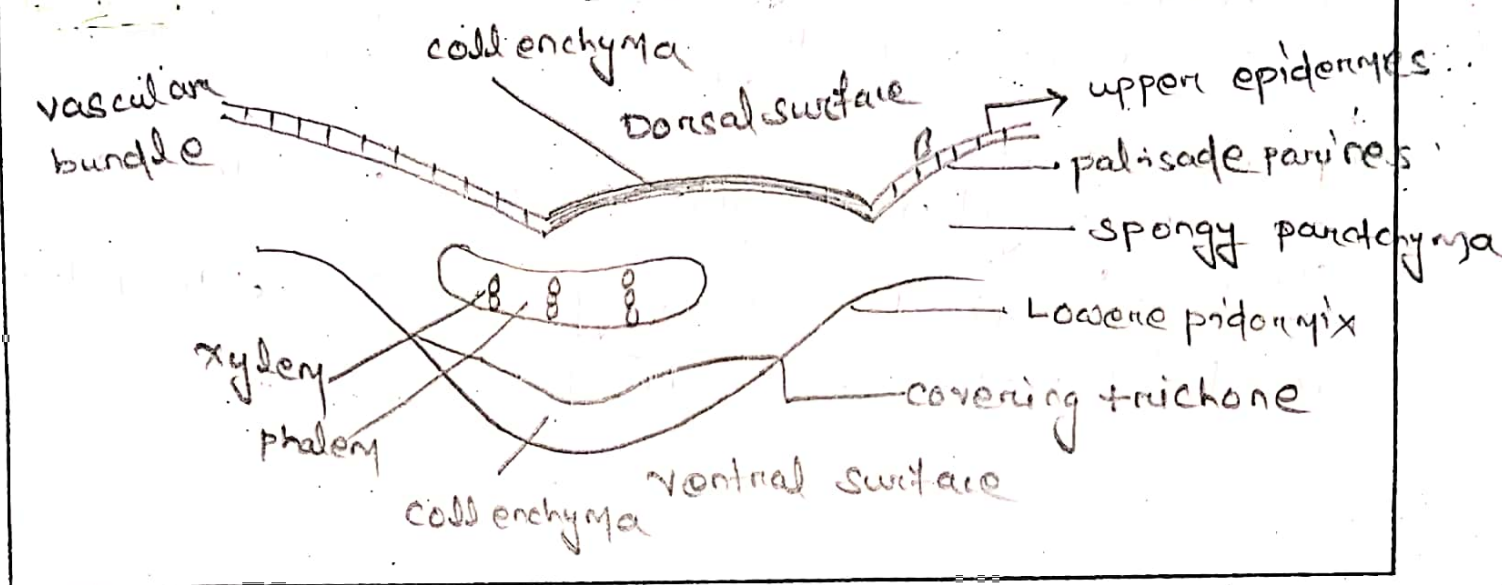


Name of the Experiment: To study about the morphological characteristics of the supplied drug vinca.

**SKETCH**



**Material, Tools & Equipment Required (if any)**

Sl.No.	Name	Specification	Qty.

**PROCEDURE**

Theory

Biological source

It is a dried whole plant of Catharanthus roseus belong to family Apocynaceae.

Chemical constituent

It contains large number of indole-indoline alkaloids among them vinblastine and vincristine are more significant.

uses

It is used as anti cancer agent. It is given in the treatment of leukaemia in children.

## Observations, Calculations, Graph

### Microscopical characteristics

#### Stomata

Antiscyctic or unequal called stomata. There @ subsidiary cells, one is smaller than other two.

#### Trichomes -

covering, unicellular, dagger shaped, warty with bulbous base.

#### Epidermal cells

cells are slight rectangular in shape with thin and straight wall.

Mesophyll - palisade and spongy parenchyma with epidermal vessels - lignified vessels from veins.

### **Safety Precaution:**

### **Application & Inference:**

#### CONCLUSION

from the above observation we concluded that the supplied sample is *Vinca* leaf.

### ASSESSMENT

MARKING PROCEDURE		Full Mark	Marks Obtained	Remarks
Accuracy & Process	Sketch	10		
	Sequence of Operation	10		
	Use of Tools & Equipment	10		
	Safety Observation	5		
Report	Observations, Calculations, Graph	25		
Inference		30		
Viva		10		
<b>Total</b>		<b>100</b>		