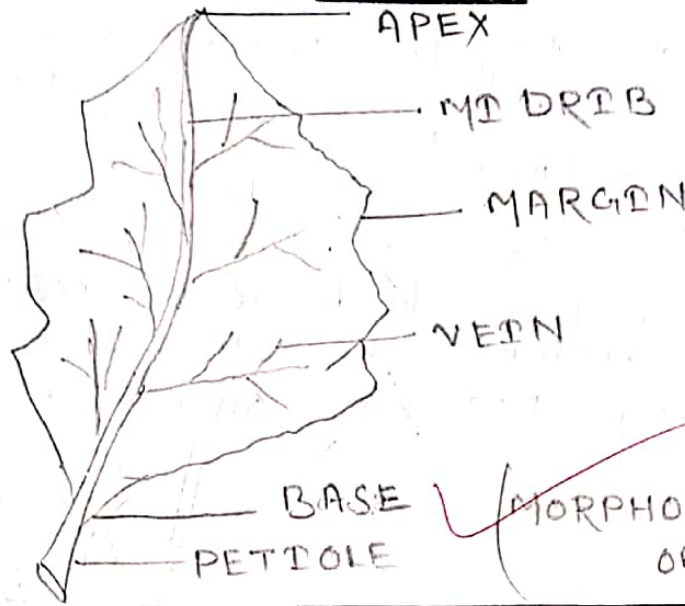


Name of the Experiment: To study about the morphological character of  
Supplied ~~crude drug~~ datura.

**SKETCH**



(MORPHOLOGICAL CHARACTER OF DATURA)

**Material, Tools & Equipment Required (if any)**

Sl.No.	Name	Specification	Qty
	supplied leaf		

**PROCEDURE**

**THEORY:-**

It consist of dried leaves of flowering tops of Datura metel belong to family Solanaceae.

**CHEMICAL REQUIREMENT:-**

It consist of 5% of total alkaloid Scopolamine is the main alkaloid. It also contain hyoscyamine and atropine.

**USES**

It is used as antispasmodic CNS depressant action.

## Observations, Calculations, Graph

colour — pale green colour  
 odour — characteristic  
 taste — Bitter  
 size — length — 9-18 cm  
           breadth — 8-13 cm  
 apex — acute  
 margin — Teeth dividing the sinuses 2-4 lobes.  
 vein — 4-6 vein on each side of midrib  
 Base — asymmetrical  
 petiole — short  
 shape — ovate  
 Texture — Thin and minute hair are present  
               upper epidermis is darker than lower.  
               Midrib is prominent on lower surfaces.

### Safety Precaution:

### Application & Inference:

#### CONCLUSION —

Due to the above character we conclude that supplied sample may be Datura.

### ASSESSMENT

MARKING PROCEDURE		Full Mark	Marks Obtained	Remarks
Accuracy & Process	Sketch	10		
	Sequence of Operation	10		
	Use of Tools & Equipment	10		
	Safety Observation	5		
Report	Observations, Calculations, Graph	25		
Inference		30		
Viva		10		
<b>Total</b>		<b>100</b>		