



What is an Operating System?

- A program that acts as an intermediary between a user of a computer and the computer hardware
- Operating system goals:
 - Execute user programs and make solving user problems easier
 - Make the computer system convenient to use
 - Use the computer hardware in an efficient manner





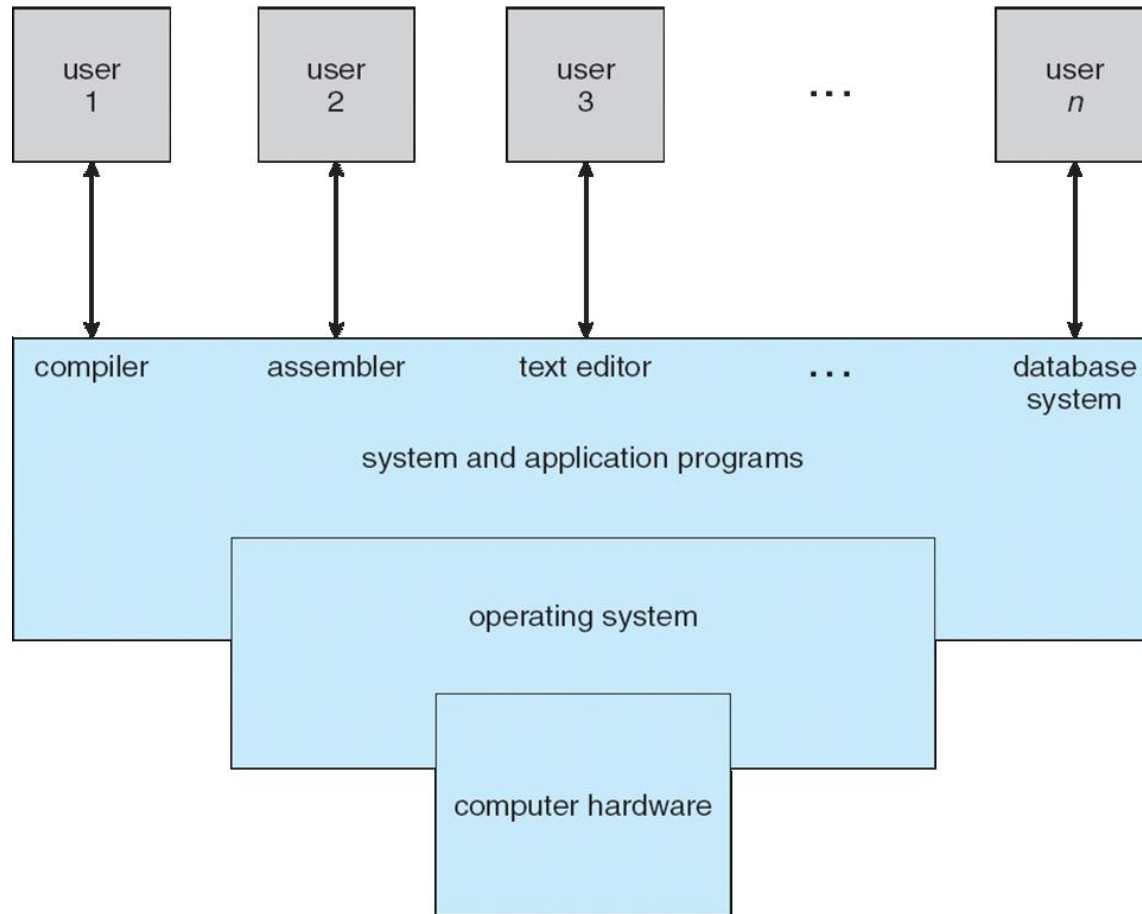
Computer System Structure

- Computer system can be divided into four components:
 - Hardware – provides basic computing resources
 - ▶ CPU, memory, I/O devices
 - Operating system
 - ▶ Controls and coordinates use of hardware among various applications and users
 - Application programs – define the ways in which the system resources are used to solve the computing problems of the users
 - ▶ Word processors, compilers, web browsers, database systems, video games
 - Users
 - ▶ People, machines, other computers





Four Components of a Computer System





What Operating Systems Do

- Depends on the point of view
- Users want convenience, **ease of use** and **good performance**
 - Don't care about **resource utilization**
- But shared computer such as **mainframe** or **minicomputer** must keep all users happy
- Users of dedicate systems such as **workstations** have dedicated resources but frequently use shared resources from **servers**
- Handheld computers are resource poor, optimized for usability and battery life
- Some computers have little or no user interface, such as embedded computers in devices and automobiles





Operating System Definition

- OS is a **resource allocator**
 - Manages all resources
 - Decides between conflicting requests for efficient and fair resource use
- OS is a **control program**
 - Controls execution of programs to prevent errors and improper use of the computer

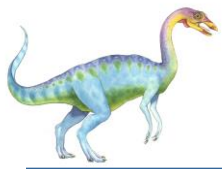




Operating System Definition (Cont.)

- No universally accepted definition
- “Everything a vendor ships when you order an operating system” is a good approximation
 - But varies wildly
- “The one program running at all times on the computer” is the **kernel**.
- Everything else is either
 - a system program (ships with the operating system) , or
 - an application program.





Computer Startup

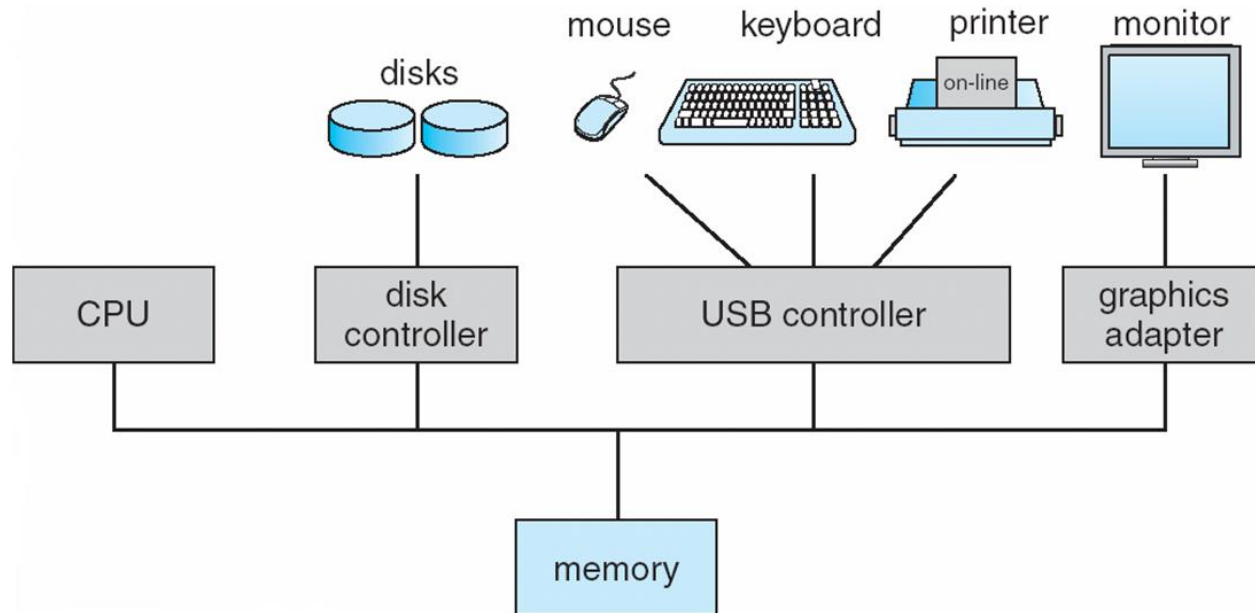
- **bootstrap program** is loaded at power-up or reboot
 - Typically stored in ROM or EPROM, generally known as **firmware**
 - Initializes all aspects of system
 - Loads operating system kernel and starts execution





Computer System Organization

- Computer-system operation
 - One or more CPUs, device controllers connect through common bus providing access to shared memory
 - Concurrent execution of CPUs and devices competing for memory cycles





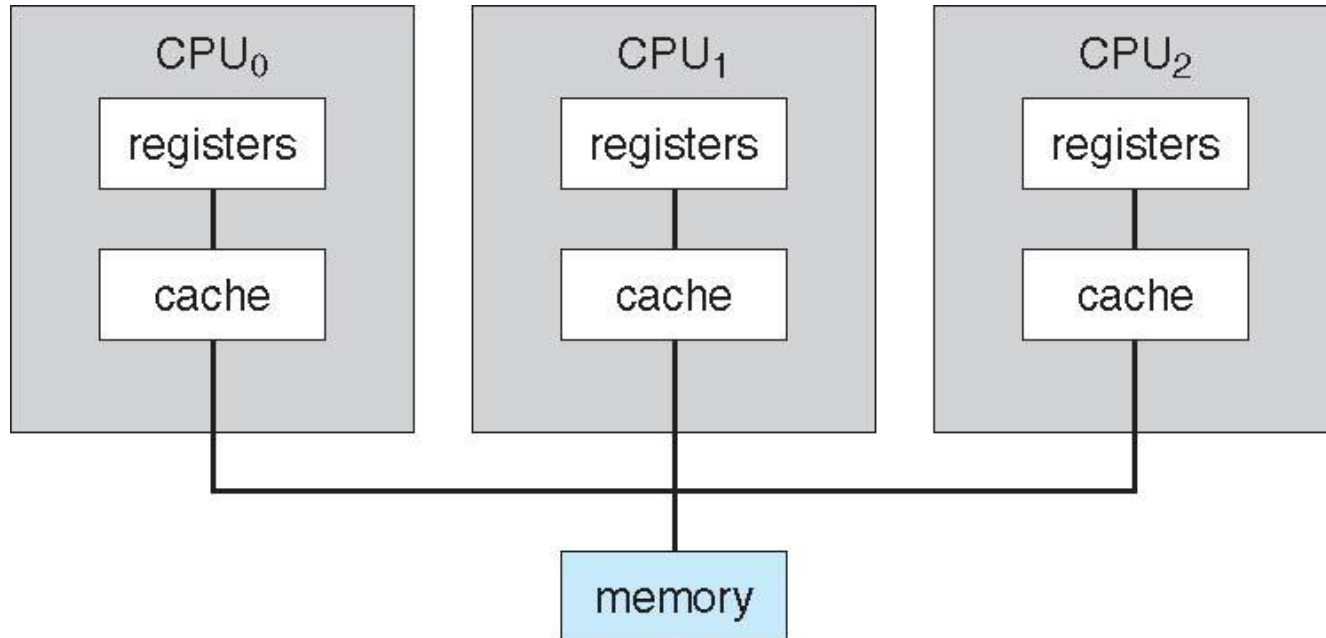
Computer-System Architecture

- Most systems use a single general-purpose processor
 - Most systems have special-purpose processors as well
- **Multiprocessors** systems growing in use and importance
 - Also known as **parallel systems**, **tightly-coupled systems**
 - Advantages include:
 1. **Increased throughput**
 2. **Economy of scale**
 3. **Increased reliability** – graceful degradation or fault tolerance
 - Two types:
 1. **Asymmetric Multiprocessing** – each processor is assigned a specific task.
 2. **Symmetric Multiprocessing** – each processor performs all tasks





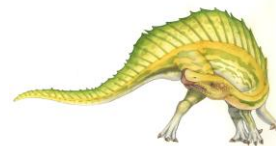
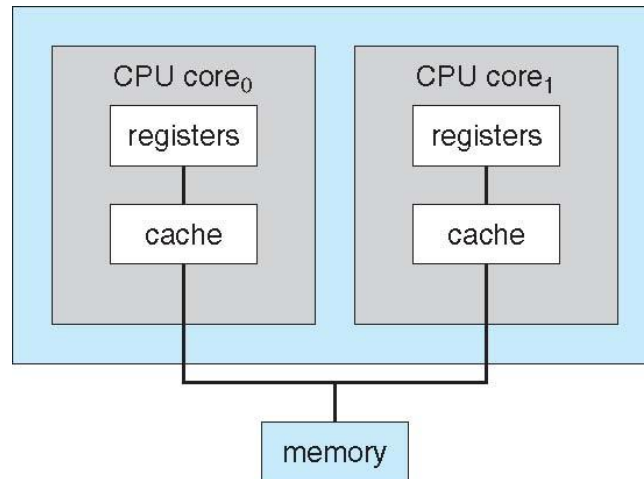
Symmetric Multiprocessing Architecture





A Dual-Core Design

- Multi-chip and **multicore**
- Systems containing all chips
 - Chassis containing multiple separate systems





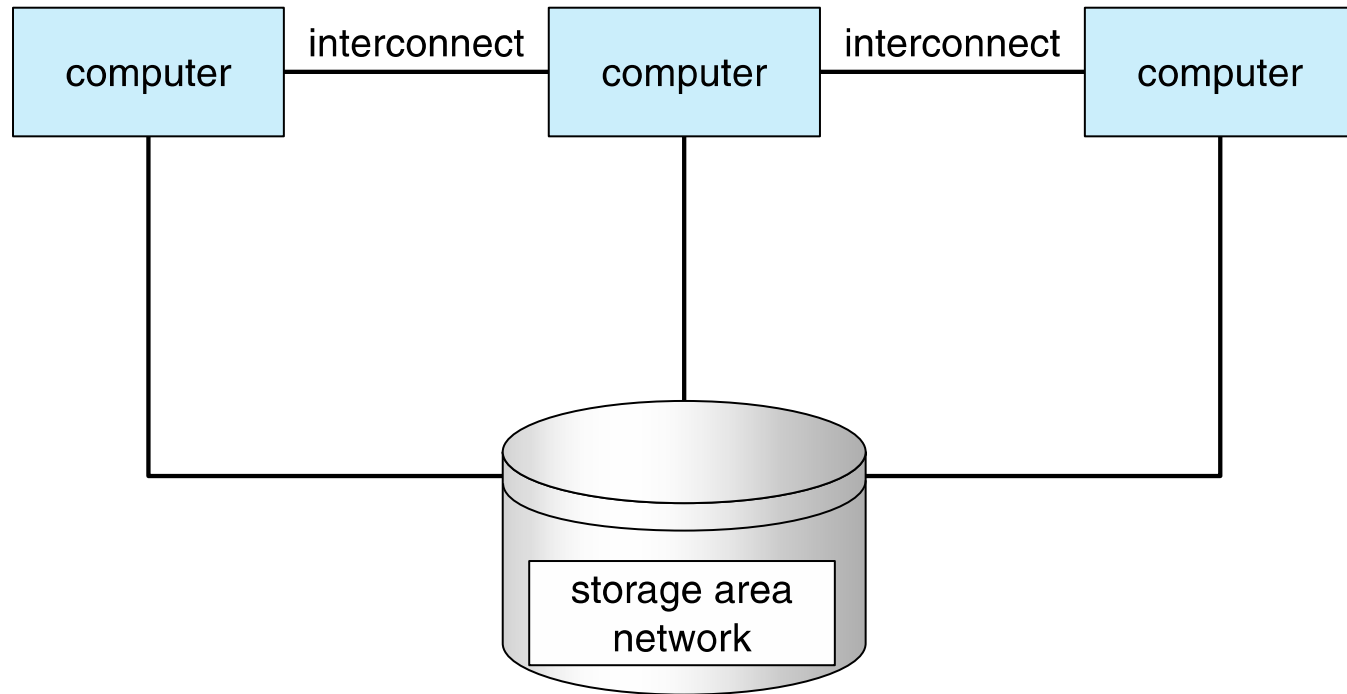
Clustered Systems

- Like multiprocessor systems, but multiple systems working together
 - Usually sharing storage via a **storage-area network (SAN)**
 - Provides a **high-availability** service which survives failures
 - ▶ **Asymmetric clustering** has one machine in hot-standby mode
 - ▶ **Symmetric clustering** has multiple nodes running applications, monitoring each other
 - Some clusters are for **high-performance computing (HPC)**
 - ▶ Applications must be written to use **parallelization**
 - Some have **distributed lock manager (DLM)** to avoid conflicting operations





Clustered Systems



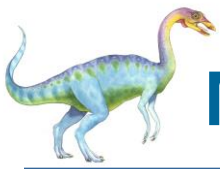


Operating System Structure

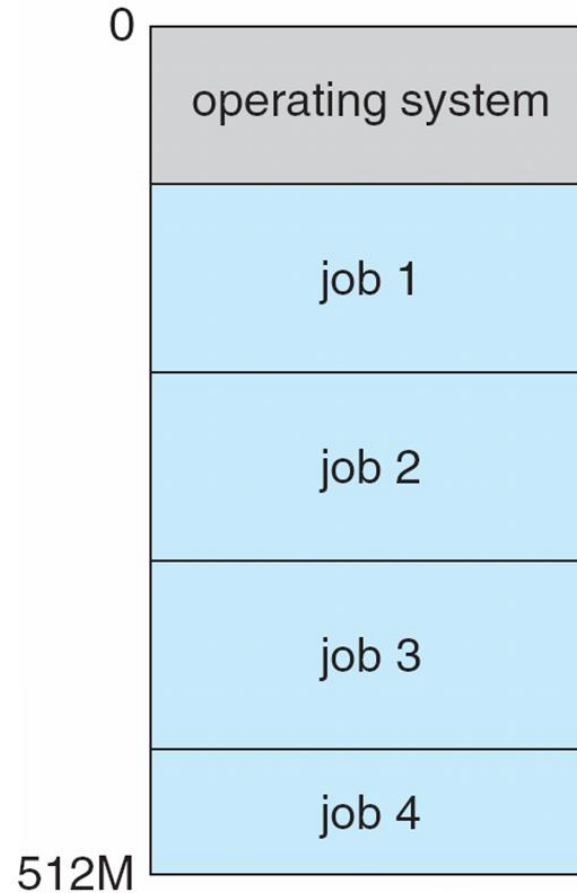
- **Multiprogramming (Batch system)** needed for efficiency
 - Single user cannot keep CPU and I/O devices busy at all times
 - Multiprogramming organizes jobs (code and data) so CPU always has one to execute
 - A subset of total jobs in system is kept in memory
 - One job selected and run via **job scheduling**
 - When it has to wait (for I/O for example), OS switches to another job

- **Timesharing (multitasking)** is logical extension in which CPU switches jobs so frequently that users can interact with each job while it is running, creating **interactive** computing
 - **Response time** should be < 1 second
 - Each user has at least one program executing in memory ⇒ **process**
 - If several jobs ready to run at the same time ⇒ **CPU scheduling**
 - If processes don't fit in memory, **swapping** moves them in and out to run
 - **Virtual memory** allows execution of processes not completely in memory





Memory Layout for Multiprogrammed System





Operating-System Operations

- **Interrupt driven** (hardware and software)
 - Hardware interrupt by one of the devices
 - Software interrupt (**exception** or **trap**):
 - ▶ Software error (e.g., division by zero)
 - ▶ Request for operating system service
 - ▶ Other process problems include infinite loop, processes modifying each other or the operating system





Operating-System Operations (cont.)

- **Dual-mode** operation allows OS to protect itself and other system components
 - **User mode** and **kernel mode**
 - **Mode bit** provided by hardware
 - ▶ Provides ability to distinguish when system is running user code or kernel code
 - ▶ Some instructions designated as **privileged**, only executable in kernel mode
 - ▶ System call changes mode to kernel, return from call resets it to user
- Increasingly CPUs support multi-mode operations
 - i.e. **virtual machine manager (VMM)** mode for guest **VMs**





Transition from User to Kernel Mode

- Timer to prevent infinite loop / process hogging resources
 - Timer is set to interrupt the computer after some time period
 - Keep a counter that is decremented by the physical clock.
 - Operating system set the counter (privileged instruction)
 - When counter zero generate an interrupt
 - Set up before scheduling process to regain control or terminate program that exceeds allotted time

