



<https://www.nabard.org/>

Role of NABARD in fisheries development

Mr. Chandan Halder

National Bank for Agriculture and Rural Development (NABARD)

- It is the apex banking institution to provide finance for **Agriculture and rural development**.
- National Bank for Agriculture and Rural Development (NABARD) was established with the paid up capital of Rs. 100 cr. by 50: 50 contribution of government of India and Reserve bank of India.
- It is an apex institution in rural credit structure for providing credit for promotion of **agriculture, fisheries, small scale industries, cottage and village industries, handicrafts etc.**

History....

- The Committee to Review Arrangements for Institutional Credit for Agriculture and Rural Development (CRAFICARD), set up by the Reserve Bank of India (RBI) under the Chairmanship of SHRI B. SIVARAMAN, conceived and recommended the establishment of the National Bank for Agriculture and Rural Development (NABARD). It was established on 12 July 1982 by a special act by the parliament and its main focus was to uplift rural India by increasing the credit flow for elevation of agriculture .

NABARD's Micro Finance - Vision and Mission

Vision:

Empowerment of rural poor by improving their access to the formal credit system through various MF innovations in a cost effective and sustainable manner .

Mission:

Promoting sustainable and equitable agriculture and rural development through effective credit support, related services, institution building and other innovative initiatives.



Headquarters



Bandra-Kurla Complex ,
Bandra , Mumbai, Maharashtra

VISIT IN NABARD HEAD OFFICE



Objectives

- *The national bank will be an apex organization in respect of all matters relating to policy, planning operational aspects in the field of credit for promotion of agriculture, small scale industries, cottage and village industries, handicrafts and other rural crafts and other allied economic activities in rural areas.*



Objectives

- The Bank will also provide direct lending to any institution as may approved by the Central Government.
- The Bank will have organic links with the Reserve Bank and maintain a close link with in.
- The Bank will serve as a refinancing institution for institutional credit such as long-term, short-term for the promotion of activities in the rural areas.



NABARD's Roles and Functions are summarized below :

- *Credit Functions*
- *Developmental and Promotional Functions*
- *Supervisory Functions*
- *Institutional and Capacity building*
- *Role in Training*

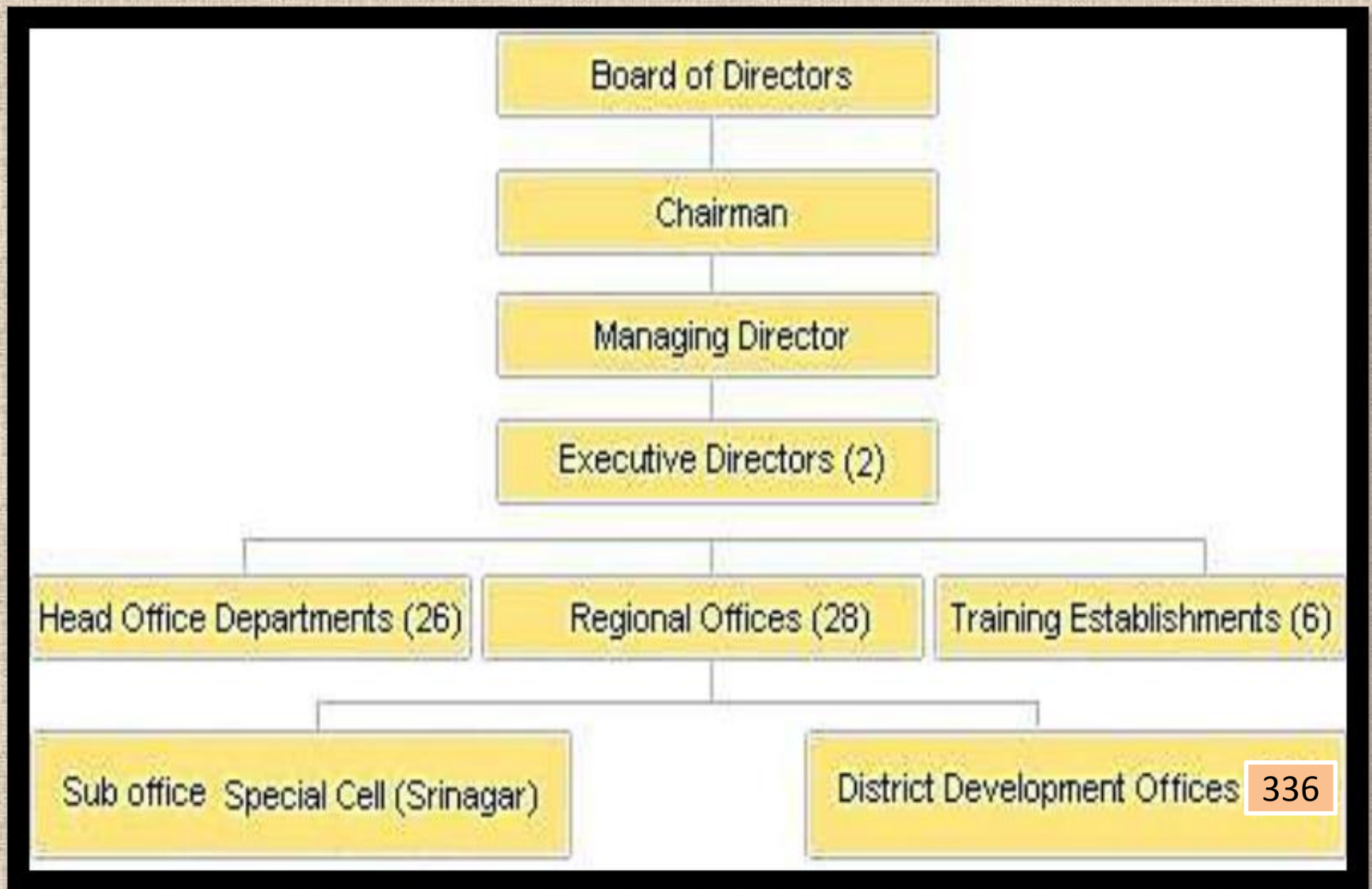


Functions

- Serves as an apex financing agency for the institutions providing investment and production credit for promoting the various developmental activities in rural areas
- Takes measures towards institution building for improving absorptive capacity of the credit delivery system, including monitoring, formulation of rehabilitation schemes, restructuring of credit institutions, training of personnel, etc.
- Co-ordinates the rural financing activities of all institutions engaged in developmental work at the field level and maintains liaison with Government of India, state governments, Reserve Bank of India (RBI) and other national level institutions concerned with policy formulation
- Undertakes monitoring and evaluation of projects refinanced by it.

- NABARD refinances the financial institutions which finances the rural sector.
- NABARD partakes in development of institutions which help the rural economy.
- NABARD also keeps a check on its client institutes.
- It regulates the institutions which provide financial help to the rural economy.
- It provides training facilities to the institutions working in the field of rural upliftment.
- It regulates and supervise the cooperative banks and the RRB's, through out entire India.


Organization Structure



- NABARD Regional Office[RO] has a Chief General Manager [CGMs] as its head, and the Head office has several top executives viz the Executive Directors[ED], Managing Directors[MD], and the Chairperson. **It has 336 District Offices across the country, one special cell at Srinagar.** It also has 6 training establishments.
- NABARD is also known for its 'SHG Bank Linkage Programme' which encourages India's banks to lend to **self-help groups (SHGs).**
- Largely because SHGs are composed mainly of poor women, this has evolved into an important Indian tool for microfinance.
- By March 2006, **22 lakh SHGs representing 3.3 crore members had to be linked to credit through this programme.**

NABARD

Revitalizing rural India through urban support

Predecessor	Agricultural Refinance and Development Corporation
Formation	July 12, 1982; 38 years ago ^[1]
Type	Development Finance Institution
Legal status	Government of India
Purpose	Development assistance Poverty Reduction
Headquarters	Mumbai, India ^[2]
Chairman	Govinda Rajulu Chintala ^[3]
Website	www.nabard.org 

Development and Promotional Functions

- Help cooperative banks and Regional Rural Banks to prepare development actions plans for themselves
- Monitor implementation of development action plans of banks and fulfillment of obligations under MoUs
- Provide financial support for the training institutes of cooperative banks



Supervisory Functions

- Undertakes inspection of Regional Rural Banks (RRBs) and Cooperative Banks (other than urban/primary cooperative banks) under the provisions of Banking Regulation Act, 1949.
- Undertakes inspection of State Cooperative Agriculture and Rural Development Banks (SCARDBs) and apex non-credit cooperative societies on a voluntary basis
- That's help full for more development .



MODEL BANKABLE PROJECTS

- *The Technical Services Department of NABARD is preparing and bringing model bankable agricultural projects in the areas of:-*
- *Minor Irrigation*
- *Land Development*
- *Plantation & Horticulture*
- *Agricultural Engineering*
- *Forestry and Wasteland*
- *Fisheries*
- *Animal Husbandry and*
- *Biotechnology*



Innovative Projects

- ❑ Setting up of grain banks
- ❑ Project on processors cards
- ❑ Project on e-gram
- ❑ Joint Liability Groups
- ❑ Setting up of computer machines
- ❑ Micro enterprise promotion by SHGs



- **Bank Regulation**

- NABARD supervises State Cooperative Banks (StCBs), District Cooperative Central Banks (DCCBs), and Regional Rural Banks (RRBs) and conducts statutory inspections of these banks.

- **Refinancing**

- NABARD's refinance fund from World Bank and Asian Development Bank to **state co-operative agriculture and rural development banks (SCARDBs)**, state co-operative banks (SCBs), regional rural banks (RRBs), commercial banks (CBs) and other financial institutions approved by RBI.
- While the ultimate beneficiaries of investment credit can be individuals, partnership concerns, companies, State-owned corporations or co-operative societies, production credit is generally given to individuals.

- Recently in 2007–08, NABARD has started a new direct lending facility under 'Umbrella Programme for Natural Resource Management' (UPNRM).
- Under this facility financial support for natural resource management activities can be provided as a loan at reasonable rate of interest.
- Already 35 projects have been sanctioned involving loan amount of about Rs 1000 crore.
- The sanctioned projects include honey collection by tribals in Maharashtra, tussar value chain by a women producer company ('MASUTA'), eco-tourism in Karnataka.