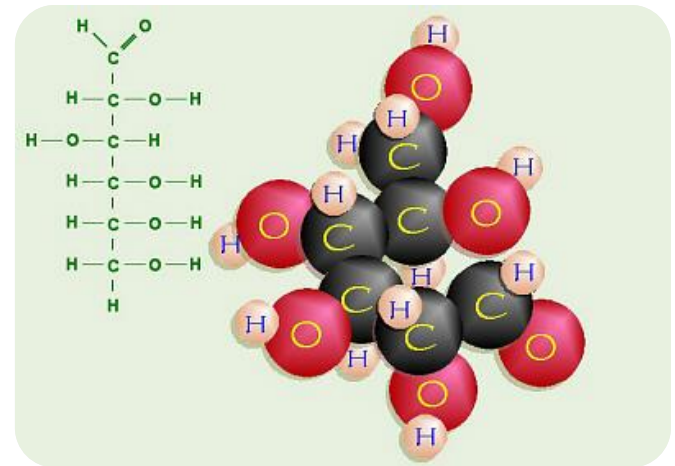
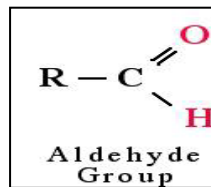
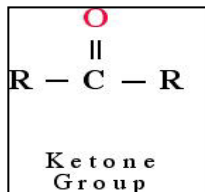


# Qualitative tests of Carbohydrate



# Carbohydrate :

- Carbohydrates are the key source of **energy** used by living things.
- Also serve as extracellular structural elements as in cell wall of bacteria and plant.
- Carbohydrates are defined as the **polyhydroxy aldehydes or polyhydroxy ketones**.
- Most , but not all carbohydrate have a formula  $(\text{CH}_2\text{O})_n$  (hence the name hydrate of carbon)
- In human body, the D-glucose is used.
- Simple sugars ends with -ose.



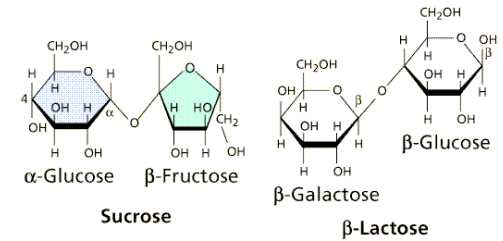
Several classifications of carbohydrates have proven useful, and are outlined in the following table.

<b>Complexity</b>	<b>Simple Carbohydrates</b> monosaccharides	<b>Complex Carbohydrates</b> disaccharides, oligosaccharides & polysaccharides		
<b>Size</b>	<b>Tetrose</b> C <sub>4</sub> sugars	<b>Pentose</b> C <sub>5</sub> sugars	<b>Hexose</b> C <sub>6</sub> sugars	<b>Heptose</b> C <sub>7</sub> sugars etc.
<b>C=O Function</b>	<b>Aldose</b> sugars having an aldehyde function or an acetal equivalent. <b>Ketose</b> sugars having a ketone function or an acetal equivalent.			
<b>Reactivity</b>	<b>Reducing</b> sugars oxidized by <a href="#">Tollens' reagent</a> (or Benedict's or Fehling's reagents). <b>Non-reducing</b> sugars not oxidized by Tollens' or other reagents.			

# Classification :

## 1-Simple sugar (one unit) :

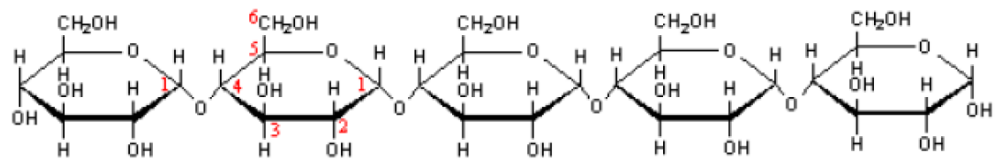
**Monosaccharides** contain **one** monosaccharide unit.



## 2-Complex sugar (more than one) :

- **Disaccharides** contain **two** monosaccharide units.
- **Oligosaccharides** contain **3-9** monosaccharide units.
- **Polysaccharides** can contain more than 9 monosaccharide units.

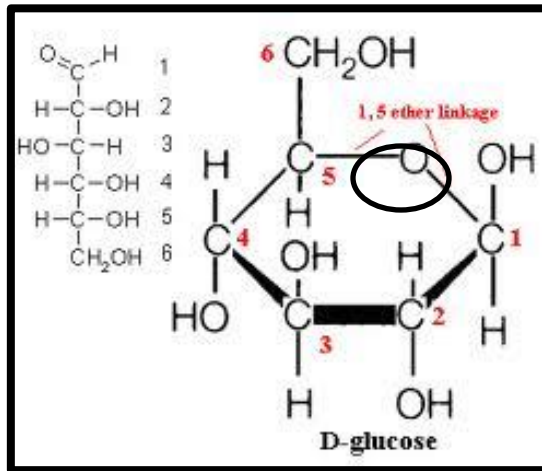
-Complex carbohydrates can be broken down into smaller sugar units through a process known as **hydrolysis**.



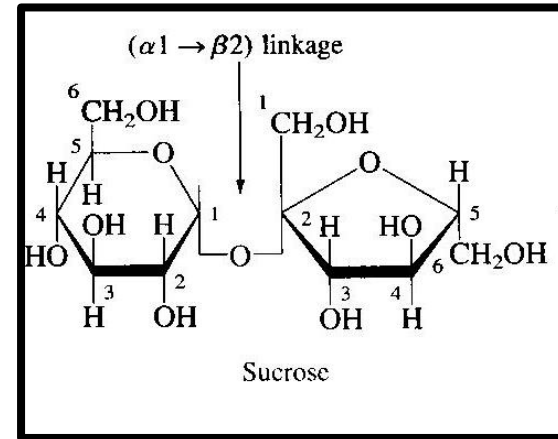
Amylose

# Reducing and non reducing sugars

Reducing and non reducing sugar :If the oxygen on the anomeric carbon of a sugar is not attached to any other structure, that sugar can act as a reducing agent and is termed a reducing sugar.



reducing



Non-reducing

## Solubility of sugars [physical property]:

Monosaccharide and disaccharide **can** be dissolved freely in water because water is a polar substance, while polysaccharide **cannot** be dissolved easily in water, because, it has **high molecular weight** , which give colloidal solutions in water.



# Chemical Properties of Carbohydrates:

- 1- **Molisch Test:** specific for carbohydrates.
- 2- **Benedict's Test:** presence of reducing sugars.
- 3- **Barfoed's Test:** test used for detecting the presence of monosaccharides.
- 4- **Bial's Test:** used to detect pentose [5C] monosaccharides.
- 5- **Seliwanoff's Test:** distinguish between aldoses and ketoses.

# 1.Molisch test:

**This test is specific for all carbohydrates** Monosaccharide gives a **rapid** positive test, Disaccharides and polysaccharides react **slower**.

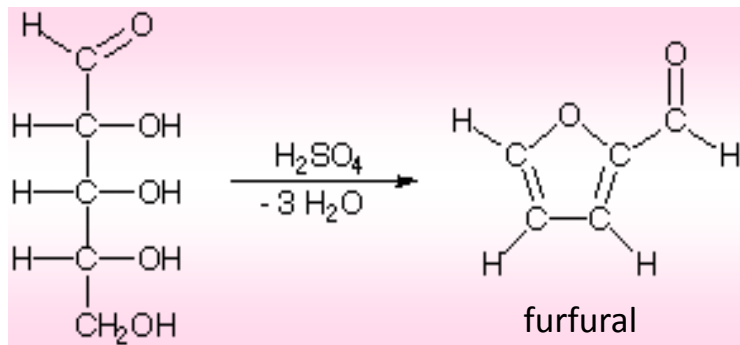
## Objective:

To identify the carbohydrate from other macromolecules, lipids and proteins.

## Principle:

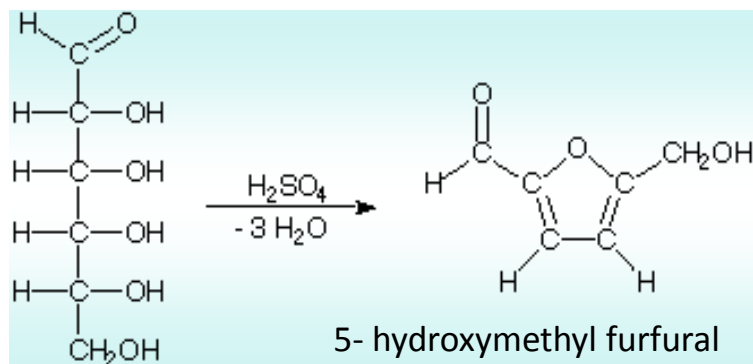
- The test reagent( $H_2SO_4$ ) dehydrates pentose to form furfural and dehydrates hexoses to form 5- hydroxymethyl furfural.
- The furfural and 5- hydroxymethyl furfural further react with  $\alpha$ -naphthol present in the test reagent to produce a **purple ring**.





$\alpha$ -naphthol  
[Present in the reagent ]

Purple ring



$\alpha$ -naphthol

Purple ring

## Method :

- 1-Two ml of a sample solution is placed in a test tube.
- 2-Two drops of the Molisch reagent (which  $\alpha$ -naphthol in 95% ethanol) is added.
- 3-The solution is then poured slowly into a tube containing two ml of concentrated sulfuric acid so that two layers form, producing violet ring appear as liaison between the surface separations.

Tube	Observation
Glucose	
Lactose	
Starch	

## 2. Benedict's test:

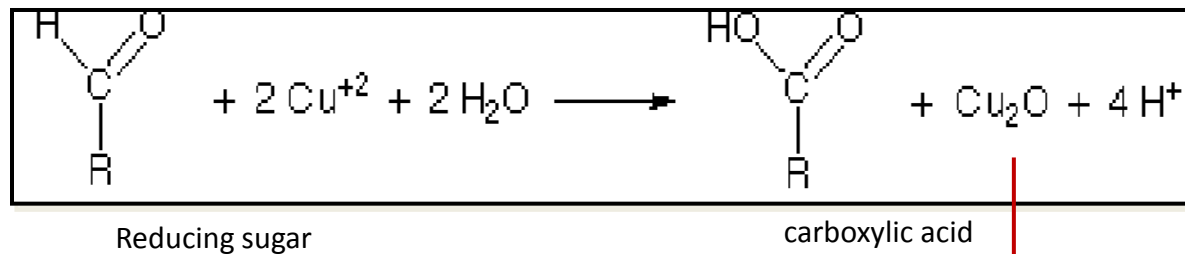
### Objective:

To detect the presence of reducing sugars.

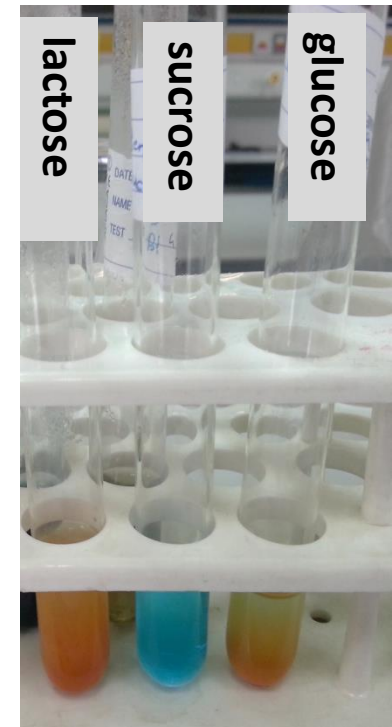
- **All monosaccharides** are reducing sugars; they all have a free reactive carbonyl group.
  - **Some disaccharides** have exposed carbonyl groups and are also reducing sugars.  
Other disaccharides such as sucrose are non-reducing sugars and will not react with Benedict's solution
- Large polymers** of glucose, such as starch, are **not** reducing sugars, since the concentration of hemiacetal groups is very low.

## Principle :

- The copper sulfate ( $\text{CuSO}_4$ ) present in Benedict's solution reacts with electrons from the aldehyde or ketone group of the reducing sugar in **alkaline medium**.
- Reducing sugars are oxidized by the copper ion in solution to form a carboxylic acid and a **reddish precipitate** of copper (I) oxide.



reddish  
precipitate  
[copper oxide].



## Method :

- One ml of a sample solution is placed in a test tube.
- Two ml of Benedict's reagent is added.
- The solution is then heated in a boiling water bath for five minutes.
- A positive test is indicated by: The formation of a reddish precipitate.

Tube	observation
1-glucose	
2-lactose	
3-starch	

# 3.Barfoed's Test:

Objective :

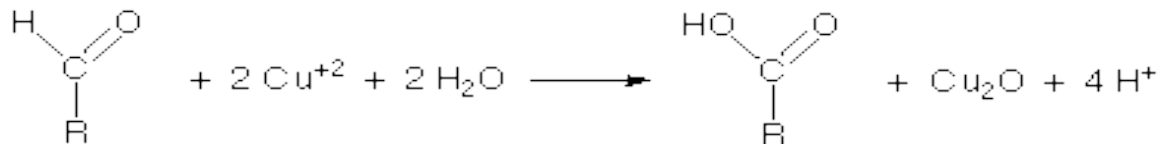
To distinguish between mono- , di- and poly saccharides.

Principle :

Barfoed's test used copper (II) ions in a **slightly acidic medium**.

Reducing **monosaccharides** are oxidized by the copper ion in solution to form a carboxylic acid and a **reddish** precipitate of copper (I) oxide within three minutes. Reducing **disaccharides** undergo the same reaction, but do so at a **slower** rate.

-The **nonreducing** sugars give negative result.



## Method :

- Place one ml of a sample solution in a test tube.
- Add 3 ml of Barfoed's reagent (a solution of cupric acetate and acetic acid).
- Heat the solution in a boiling water bath for 6 minutes(after the 3 min check the tubes).

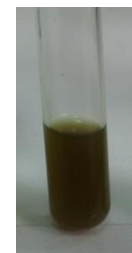
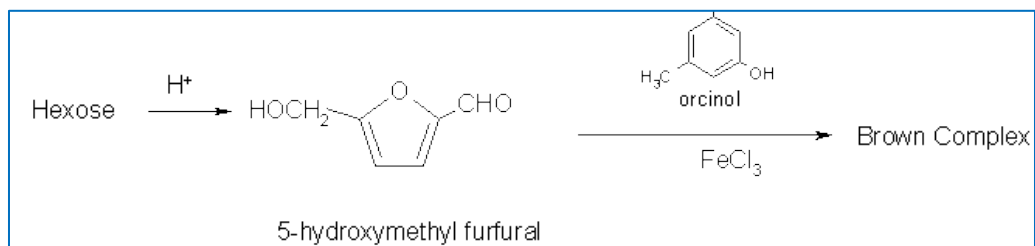
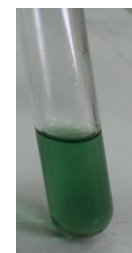
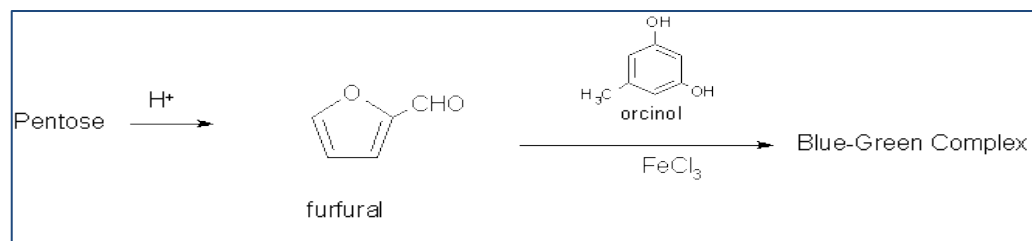
Tube	observation
glucose	
lactose	
starch	



## 4. Bial's Test:

**Objective:** To distinguish between pentose monosaccharide and hexose monosaccharide

**Principle:** Bial's test uses concentrated HCl as a dehydrating acid and orcinol + traces of ferric chloride [ $\text{FeCl}_3$ ] as condensation reagent. The test reagent dehydrates **pentoses** to form furfural. Furfural further reacts with orcinol and the iron ion present in the test reagent to produce a **bluish or green** product, while **hexoses** yield muddy-brown to grey condensation product.





## Method :

- Put 2 ml of a sample solution in a test tube.
- Add 3 ml of Bial's reagent (a solution of orcinol, HCl and ferric chloride) to each tube.
- Heat the tubes gently in hot water bath.
- If the color is not obvious, more water can be added to the tube.

Tube	observation
1-glucose	
2-ribose	

# 5.Seliwanoff's Test:

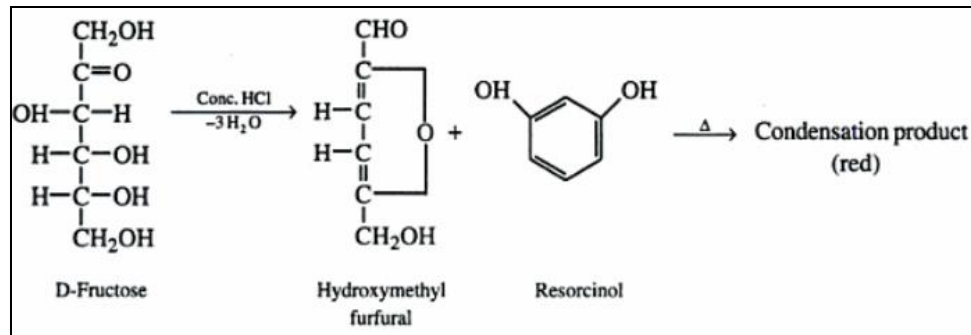
## Objective:

used to distinguish between aldoses (like glucose) and ketoses (like fructose).

## Principle:

Seliwanoff's Test uses 6M HCl as dehydrating agent and resorcinol as condensation reagent. The test reagent dehydrates **ketohexoses** to form 5-hydroxymethylfurfural. 5-hydroxymethylfurfural further condenses with resorcinol present in the test reagent to produce a **cherry red product** within two minutes.

-**Aldohexoses** react to form the same product, but do so more slowly giving yellow to faint pink color.



## Method :

- One half ml of a sample solution is placed in a test tube.
- Two ml of Seliwanoff's reagent (a solution of resorcinol and HCl) is added.
- The solution is then heated in a boiling water bath for two minutes.

Tube	observation
1-glucose	
2-fructose	

# Questions:

- 1- Name the complex formed by the addition of concentrated sulfuric acid to sugar solution and explain the reaction?
- 2- Why sucrose gives negative Benedict test?
- 3- Explain, although starch has free hemiacetal bond it gives negative Benedict test?
- 4- Why glucose (monosaccharide) and maltose (disaccharide) give positive Benedict test?
- 5- What is the difference between Benedict and Barfoed's reaction?
- 6- What are the carbohydrates' that give positive result with Seliwanoff ? why?