



Centurion  
UNIVERSITY

## **PRACTICAL NO. 1**

# **METHODS OF COLLECTION AND PRESERVATION OF INSECTS INCLUDING IMMATURE STAGES**

# METHODS OF COLLECTION AND PRESERVATION OF INSECTS INCLUDING IMMATURE STAGES

## MATERIALS REQUIRED

1. Insect collecting net
2. Killing bottle
3. Aspirator
4. Insect store boxes
5. Spreading boards
6. Entomological pins
7. Forceps
8. Vials containing 70% alcohol
9. Hand lens
10. Camel hair brush
11. Insect labels

## KILLING FLUIDS

1. ETHYL ACETATE
2. CHLOROFORM
3. BENZENE
4.  $\text{CCL}_4$

## LIQUID PRESERVATION

1. ETHYL ALCOHOL
2. FORMALIN



# PLACES WHERE YOU CAN FIND INSECTS

Sl. No.	Place	Type of insects
1.	Roots	Root grubs, termites, root aphids
2.	Stem & branches	Stem borers, bark feeders, sucking insects, shoot borers
3.	Leaves	Caterpillars, grasshoppers, leaf weevils, beetles, plant bugs, leafhoppers, aphids, whiteflies, mealy bugs, thrips
4.	Flowers and buds	Thrips, flower beetles, caterpillars, blister beetles
5.	Fruits Stored grains & other food products	Caterpillars, beetle grubs, fly maggots etc. Some types of beetles and caterpillars.
6.	Clothing	Cloths moths
7.	In and around buildings and furniture	Termites, ants, cockroaches, wood boring beetles
8.	At lights during warm evenings	small beetles, moths, leafhoppers, plant hoppers, bugs, mayflies
9.	Aquatic situations	Aquatic beetles, bugs, naiads of dragonflies and damselflies, Nymphs of mayflies, caddish flies, stoneflies etc



Insect Nets

**INSECT COLLECTING NET**



**ASPIRATOR**

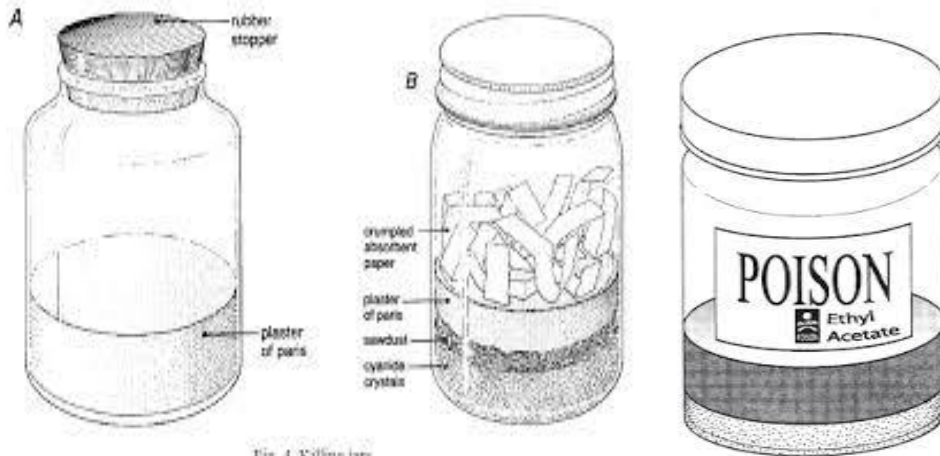


Fig. 4. Killing jars

**KILLING BOTTLE**



**INSECT STORE BOX**

*Adjustable Spreading Board*



**INSECT SPREADING BOARDS**



**FORCEPS**



**HAND LENS**

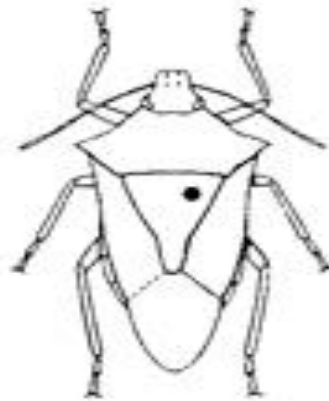


**CAMEL HAIR BRUSH**

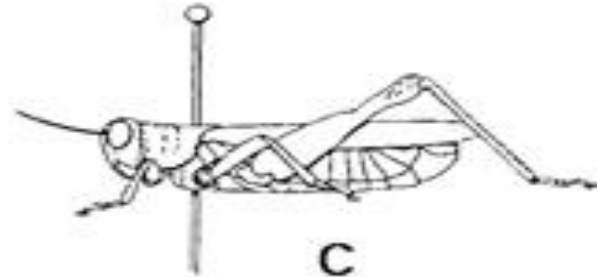
# PINNING POSITIONS IN DIFFERENT INSECTS



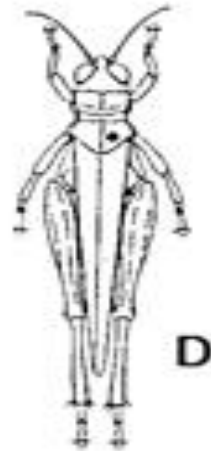
A



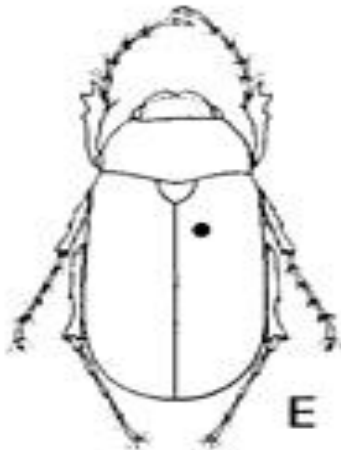
B



C



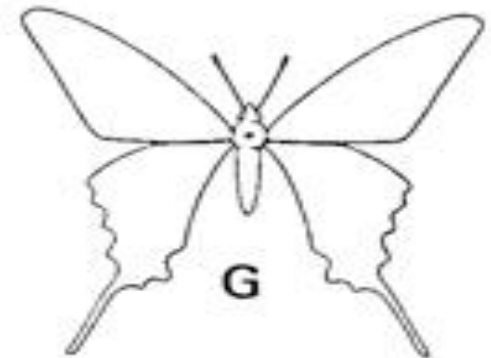
D



E

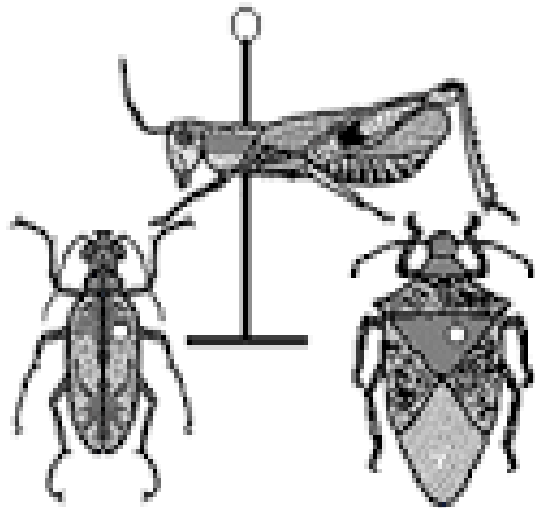


F

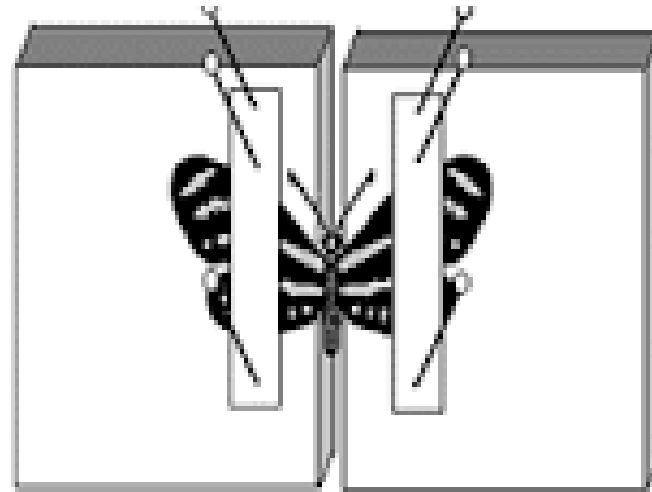


G

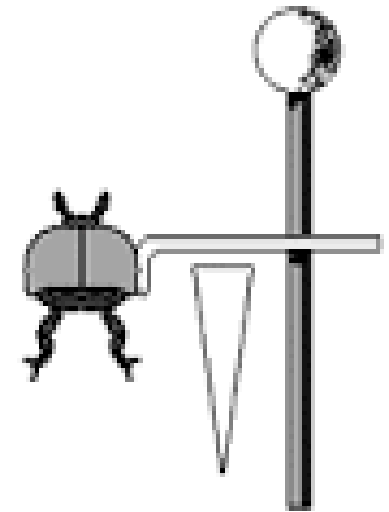
# PINNING, SPREADING AND POINTING



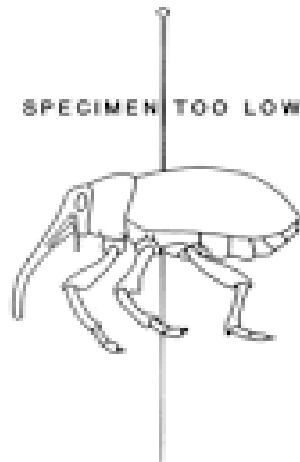
Pinning



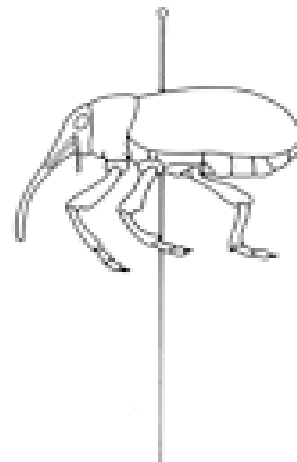
Spreading



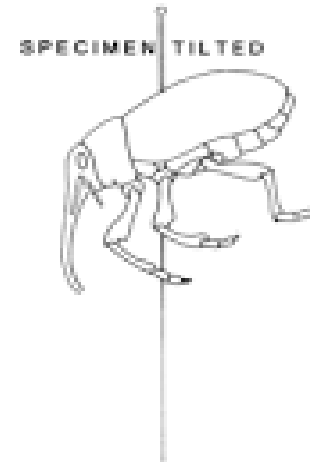
Pointing



WRONG

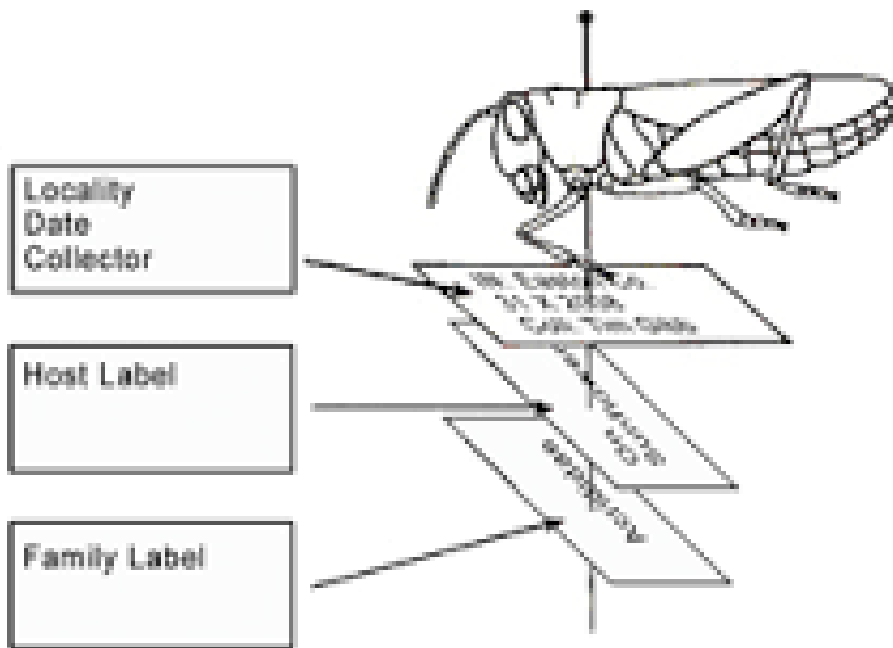


CORRECT



WRONG

# LABELLING OF THE PINNED INSECT



Common name	:
Scientific name	:
Order	:
Family	:
Host	:
Name of collector	:
Date of collection	:
Place of Collection	:

## INSECT LABEL

# LABELLING IN CASE OF POINTING

