

Ankle x ray views

By

S.S.SIVA SAGAR.

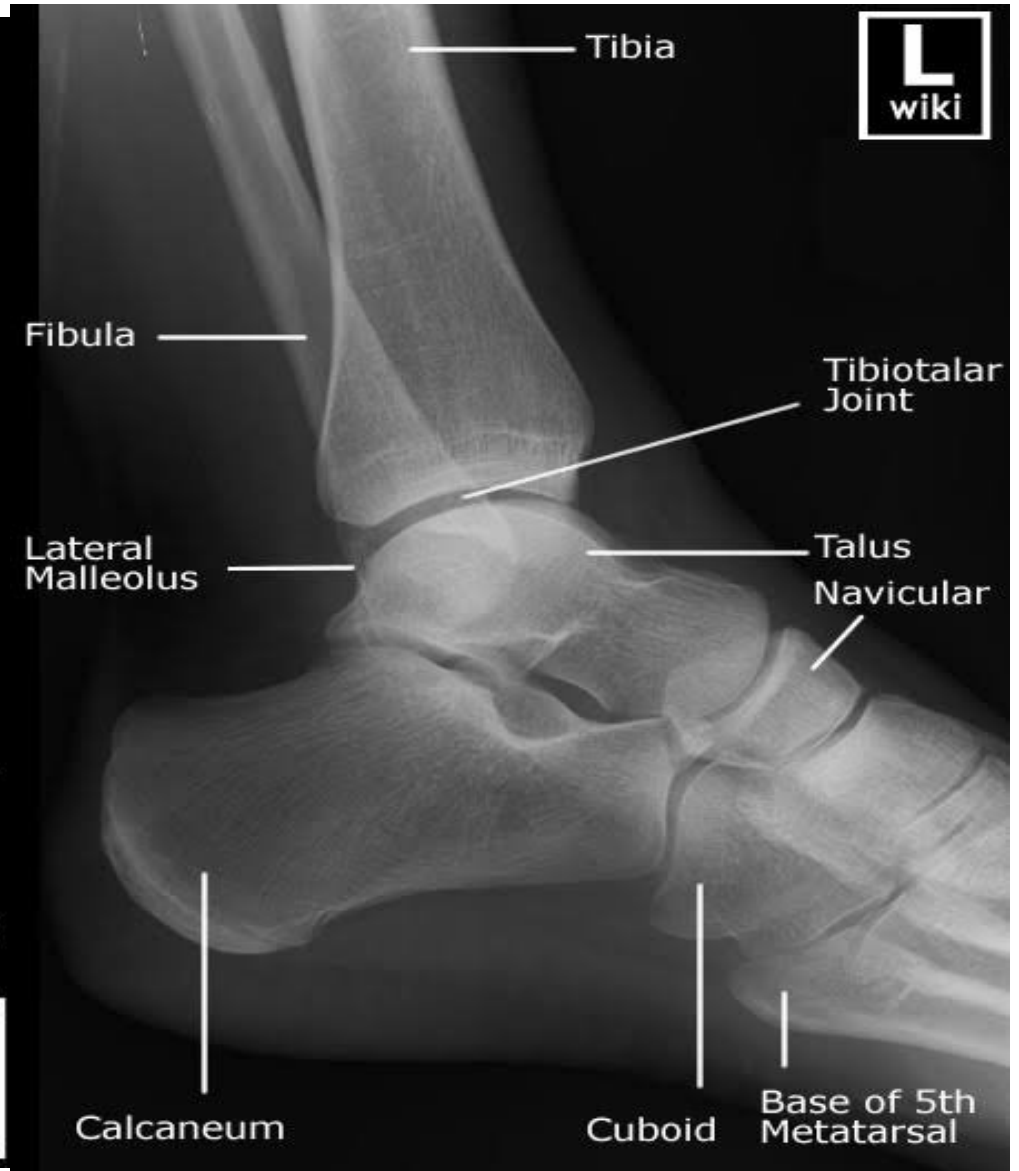
Teaching assistant

Radiology

Centurian University

Views

1. Ankle joint AP x ray view.
2. Ankle joint lateral x ray view.



Indications

- ◆ ankle trauma
- ◆ bony tenderness at the posterior edge or the tip of the lateral malleolus
- ◆ bony tenderness at the posterior edge or the tip medial malleolus
- ◆ inability to weight bear
- ◆ non-traumatic ankle pain

Contraindications

Pregnancy

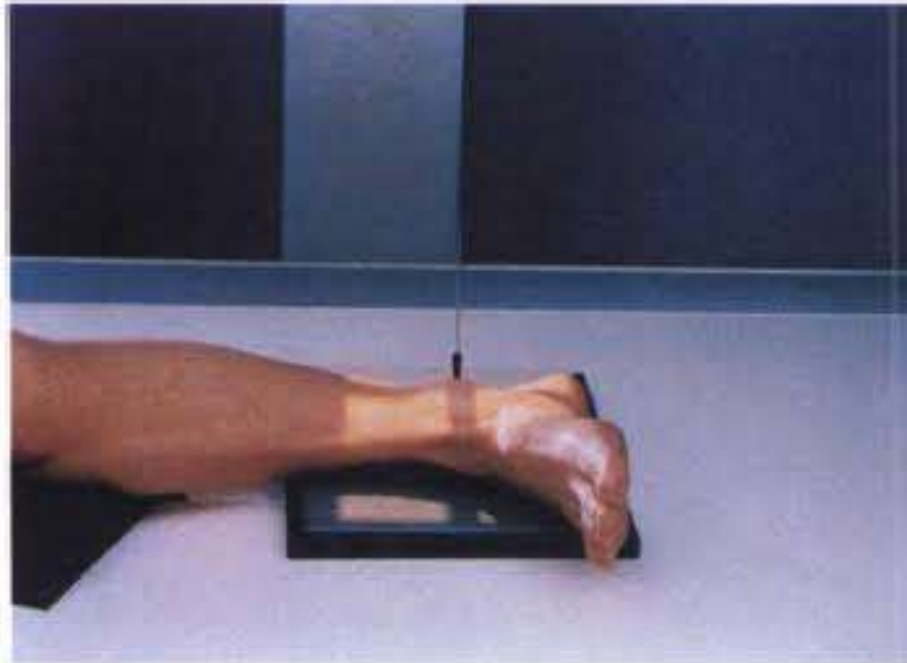
Ankle AP view Positioning

- ◆ Patient is seated on x ray table with affected leg is extended.
- ◆ Affected ankle is placed on cassette such that the foot is making an angle of 90 degrees with leg.
- ◆ Foot is immobilised with sand bags , side is marked and beam is collimated



Ankle lateral view Positioning

- ◆ Patient lies on the affected side with hip and knees flexed.
- ◆ Affected leg is raised and to place lateral aspect of affected ankle on the cassette, such that malleoli are superimposed on each other.
- ◆ The leg is immobilised. Side is marked and beam is collimated.



Centering

Ankle AP view : it is done midway between malleoli of ankle .

Ankle lateral view : it is done on medial malleolus

Technique

KVp : 70


mAs:10

FSS : small

FFD :100 cms.

With out grid

Cassette size: 12"x10"

A black and white portrait of Swami Vivekananda, a prominent Indian Hindu monk. He is wearing a traditional turban and a dark, high-collared jacket. He has a serious expression and is looking slightly to the right of the camera. The background is a plain, light color.

**Never compromise your
values to please other
people. Keep your
self-respect and walk away.**

@swamivivekananda motivation
success of life 🙏🙏