

# PHYSICAL EVIDENCE

Introduction, classification and types

# INTRODUCTION

**Physical Evidence** is any object or item (physical, chemical or biological) in any state of matter (solid, liquid, gas) that establishes that a crime has been committed or establishes a link between a crime and its perpetrator or crime and its victim.

**Example** – Documents, hair follicles, fingerprints, footprints, tyre prints, fibers, soil, blood, semen, odor of perfume or smoke etc.

- **Locard's principle of exchange** : Every contacts (living or non-living) leaves traces.

# CLASSIFICATION

## 1. On the basis of Movement :

**a. Moveable Evidences :-** The evidences which can be moved from the crime scene by any means are called Moveable Evidences.

**Example :-** Hair follicle, fibers, bulletes etc.

**b. Fixed Evidences :-** The evidences which Are fixed at the crime scene and can't be moved are called Fixed Evidences.

**Example:-** Bullet marks on wall, fingerprints, footprints etc.

# CLASSIFICATION

## 2. On the basis of source :-

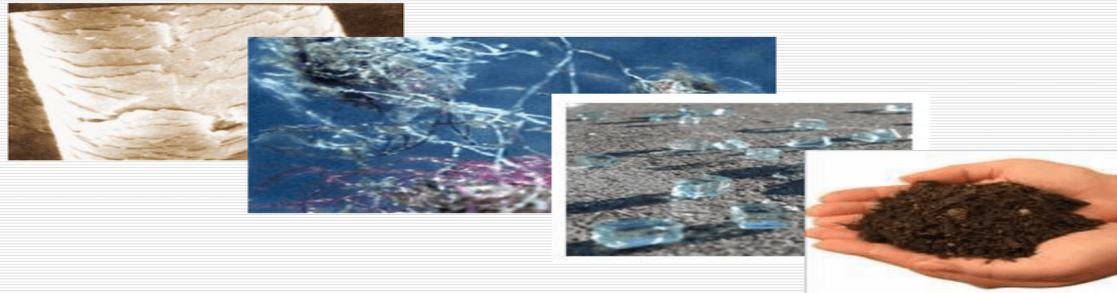
- a. Crime scene :-** The Evidences Which are found In the crime scene.
- b. Culprit/ suspect :-** The Evidences Which are collected from the suspect or victim.
- c. Victim :-** The Evidences Which are collected from the victim.

# TYPES OF PHYSICAL EVIDENCES

**1. Trace evidence :-** Hair, fiber, paint chips, Soil, dust, pollens, Glass etc.

## Trace Evidence

---





# TYPES OF PHYSICAL EVIDENCES

**2. Impression evidence :-** Fingerprints, footprints, Footwear marks, Tool marks, bite marks, lip prints Etc.



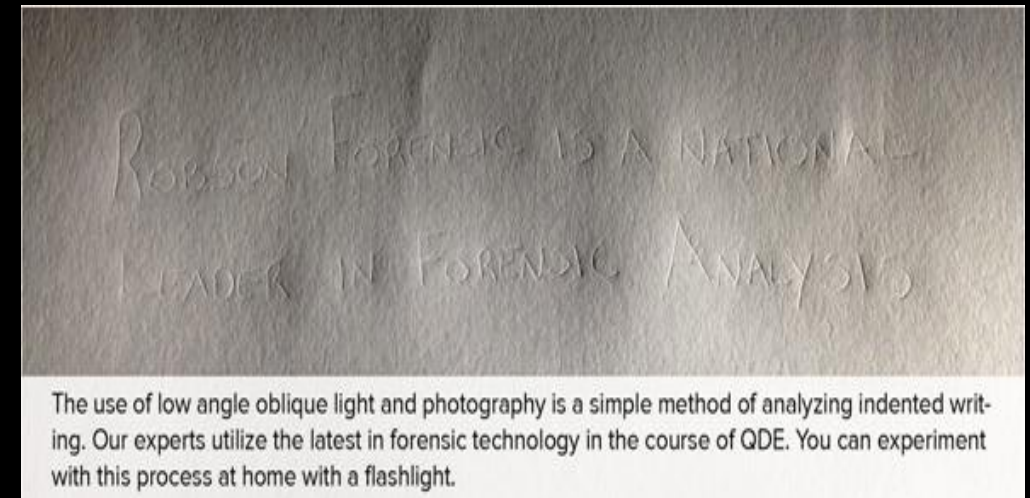
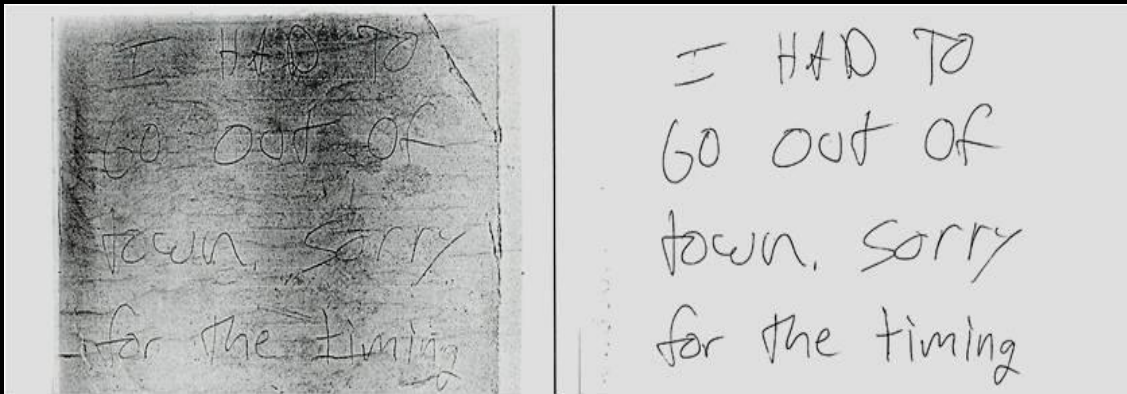
# TYPES OF PHYSICAL EVIDENCES

**3. Biological fluids :-** Blood, semen, saliva, Urin, vaginal secretions, Mucus, tears, sweat, feces etc.



# TYPES OF PHYSICAL EVIDENCES

**4. Questioned Documents :-** Paper, currency, Handwriting, signature, Type writing, Printed matter, Erased writing, Secret writing, Electronic documents, pen drive, e-mail, scopy disc, cd's) etc.







# TYPES OF PHYSICAL EVIDENCES

**5. Chemicals :-** Drugs, acids, petroleum Products, bases, medicines, Explosive residue, poison, alcohol etc.

# TYPES OF PHYSICAL EVIDENCES

**6. Tools/weapons :-** any types of tools like fire arms, hammer, Plier, screwdriver, chisel







THANK YOU