



Centurion
UNIVERSITY
*Shaping Lives...
Empowering Communities...*

Center for Smart Agriculture

High value Cut flowers



Module 2: Dutch Rose Cultivation

Session 7: Identification and Management of Pest in Dutch Rose

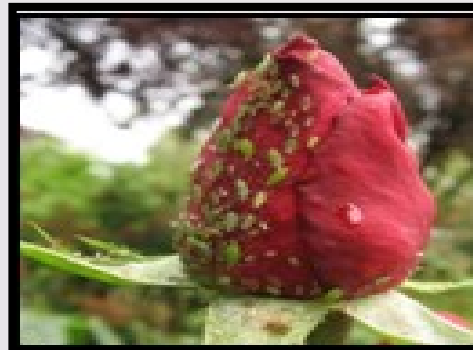


Centurion
UNIVERSITY

Shaping Lives...
Empowering Communities...

Identification of Aphids

- Aphids cluster around growing shoots and buds
- They suck the cell sap
- Affected plant parts get deformed





Centurion
UNIVERSITY

Shaping Lives...
Empowering Communities...



Centurion
UNIVERSITY

Shaping Lives...
Empowering Communities...

Management of Aphids

- Imidachloprid @ 0.5 ml per litre of water
- Dimethoate @ 1.5 ml/ litre of water
- Acephate @ 0.75 g per litre of water
- Thiomethoxam @ 0.5 g per litre of water
- Spraying of neem or pongamia oil @ 2% is effective.
- Other than chemical management, hanging of yellow sticky trap is also beneficial.



Centurion
UNIVERSITY

*Shaping Lives...
Empowering Communities...*

Identification of Scale Insect

- Reddish brown encrustations on shoots
- Both young and adult scales suck the sap from shoots.
- The insect damages the plant by secretion of honeydew which leads to development of sooty mould.
- Further, they cause yellow spots on leaves





Centurion
UNIVERSITY

Shaping Lives...
Empowering Communities...

Management of Scale Insect

- Dimethoate @ 1.5 ml/ litre of water
- Chloropyriphos @ 2.1 ml/ litre of water
- Dichlorovos @ 1.0 ml/ litre of water
- Scales can be removed by rubbing the scurf encrustation with toothbrush
- Cotton swab dipped in 70% Isopropyl alcohol or methylated sprit

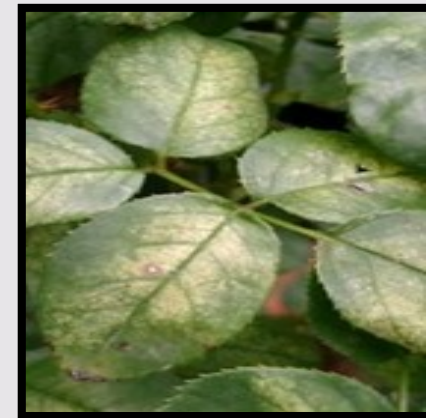
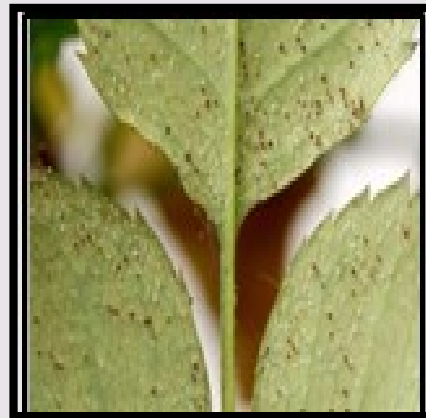


Centurion
UNIVERSITY

Shaping Lives...
Empowering Communities...

Identification of Spider Mite

- The injuries due to feeding can be seen as silvery, mottled leaves which turn yellow
- Discolouration, bronzing and drying of leaves





Centurion
UNIVERSITY

Shaping Lives...
Empowering Communities...

Management of Spider Mite

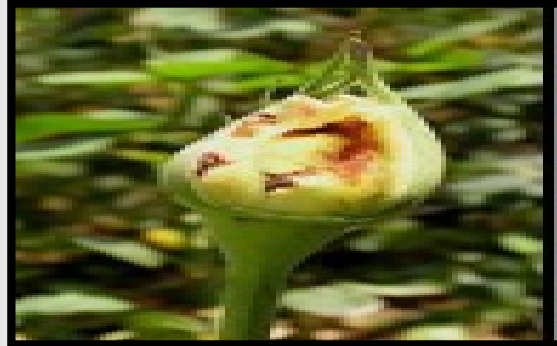
- Dicofol @ 2 ml per litre of water
- Ethion @ ml per litre of water
- Dimethoate @ 1.5 ml per litre of water
- Propagite @ 1 ml per litre of water
- Collection and burning of severely infested plant parts reduce further multiplication of mites.



Centurion
UNIVERSITY

Shaping Lives...
Empowering Communities...

Identification of Thrips



- Thrips damage new flush by sucking sap from tender parts
- Scirtothrips is a problem in polyhouse roses.
- It creates brownish spots on crippled flowers and deformed buds
- The leaves look silvery, caused by air pockets in the punctured holes
- Brownish marks underneath the leaves



Centurion
UNIVERSITY

Shaping Lives...
Empowering Communities...

Management of Thrips

- Dimethoate @ 1.5 ml/ litre of water
- Acephate @ 0.75 g per litre of water
- Thiomethoxam @ 0.5 g per litre of water
- Dichlorovos @ 1.0 ml/ litre of water
- All infested plants and flowers should be removed
- Hanging of blue sticky trap is beneficial to manage thrips



Centurion
UNIVERSITY

Shaping Lives...
Empowering Communities...

THANK YOU