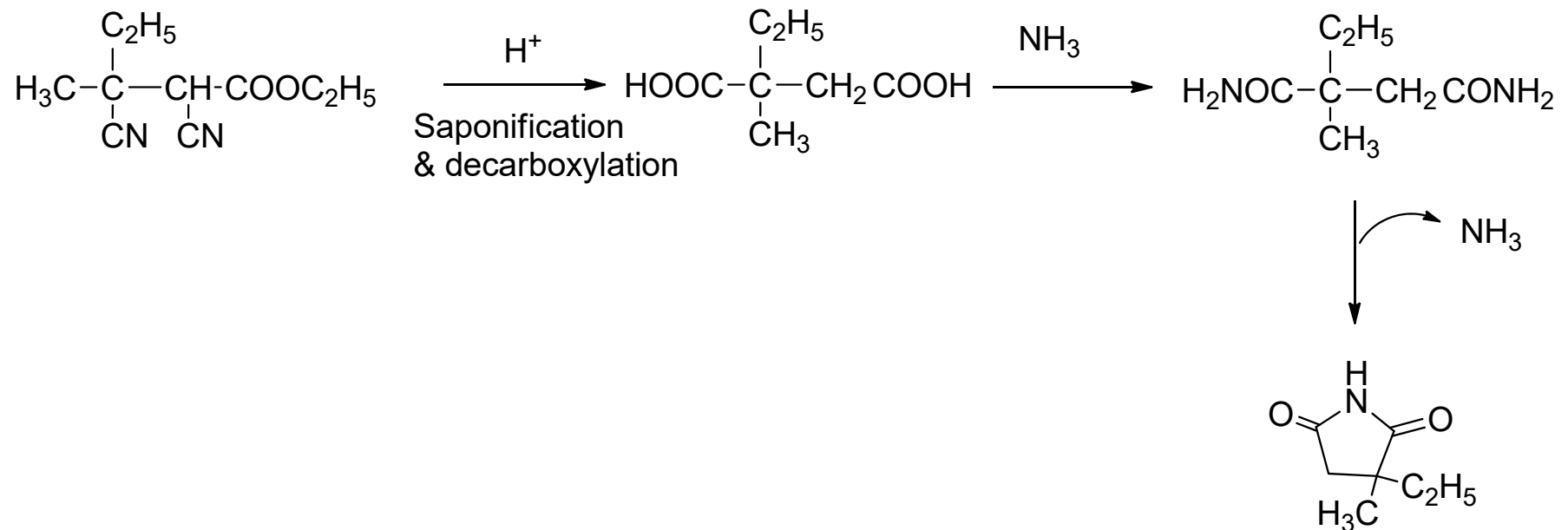
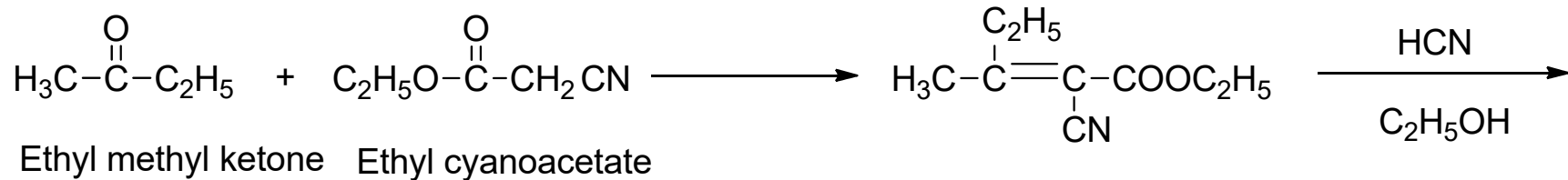


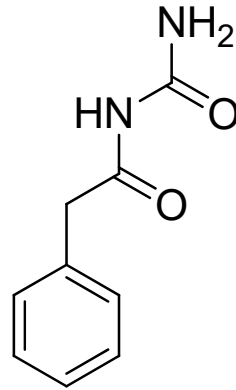
## Ethosuximide



**MOA**-Similar to phensuximide

**Uses**- used for the treatment of petit mal epilepsy

# Phenacemide



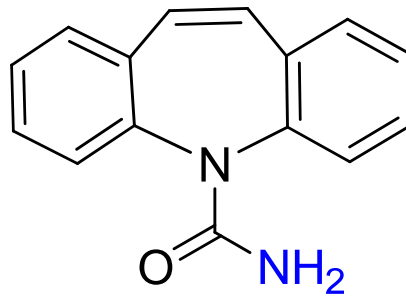
## MOA

Phenacemide binds to and blocks neuronal sodium channels or voltage sensitive calcium channels. This blocks or suppresses neuronal depolarization and hypersynchronization.

## Uses

Used to control certain seizures in the treatment of epilepsy.

## Carbamazepine



**MOA:** Carbamazepine inhibits the voltage-dependent sodium channels and prevents generation of high frequency action potentials. It also increase dopamine turnover and increase GABA transmission.

**Uses:** Carbamazepine is indicated for the treatment of epilepsy and pain associated with neuralgia.

