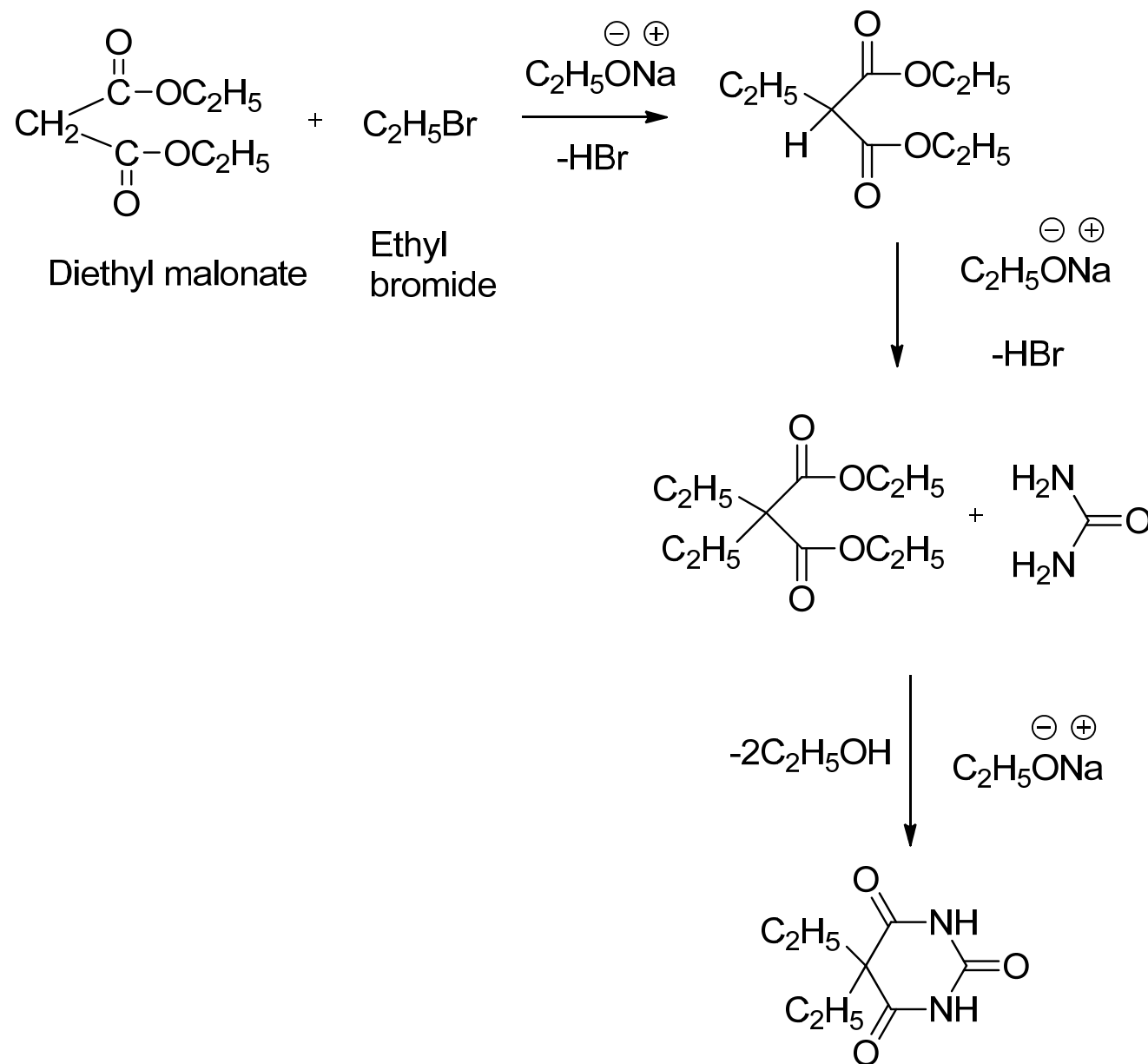


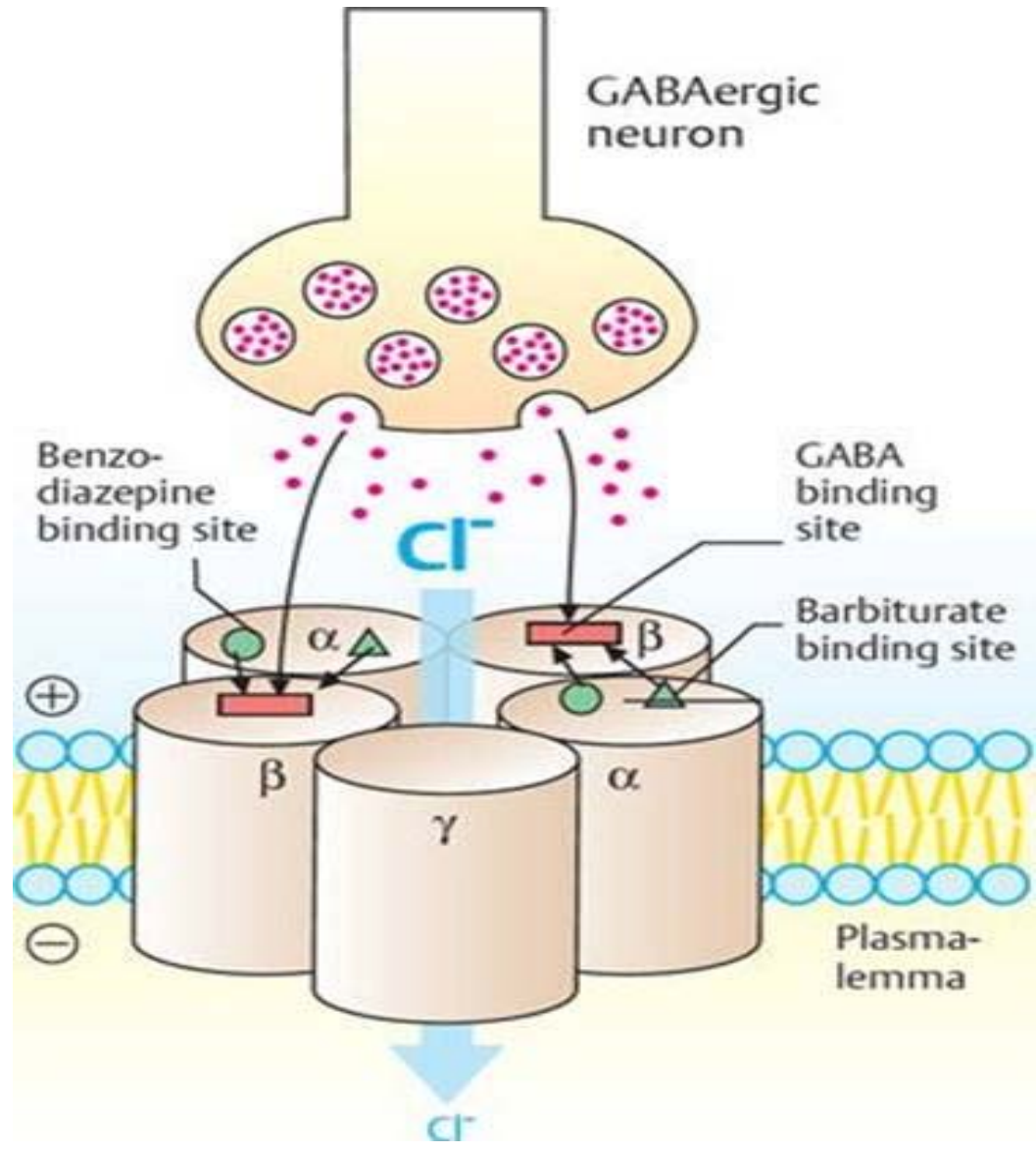
Barbital



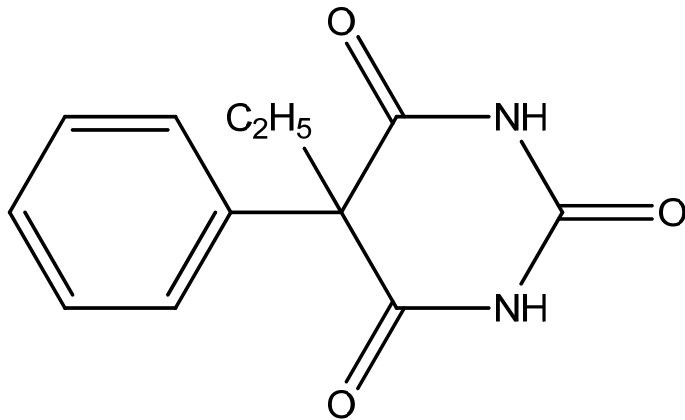
Mechanism of action

- ❖ Barbitol primarily acts at GABA-BZD receptor-Cl ion channel complex and increase the duration of time for which the Cl⁻ ion channel remain open. It potentiate the effect of GABA at this receptor.
- ❖ It don't binds to the benzodiazepine receptor but binds to another site known as picrotoxin sensitive site on the same macromolecular complex.
- ❖ At higher concentration it directly increases the chloride ion conductance and inhibits ca⁺² dependent release of neurotransmitter.

Uses-It is used as a hypnotic and sedative



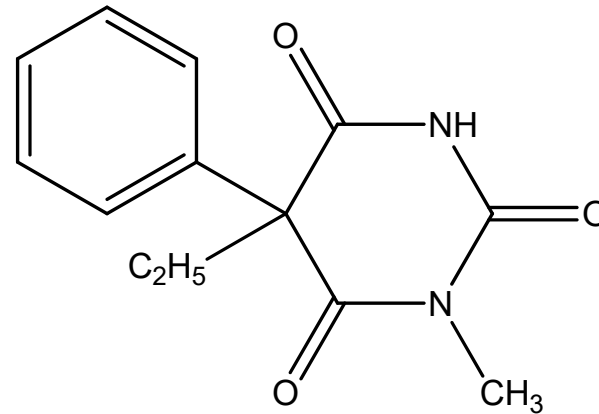
Phenobarbital



MOA-Similar to barbital

Uses- For the treatment of all types of seizures except absence seizures

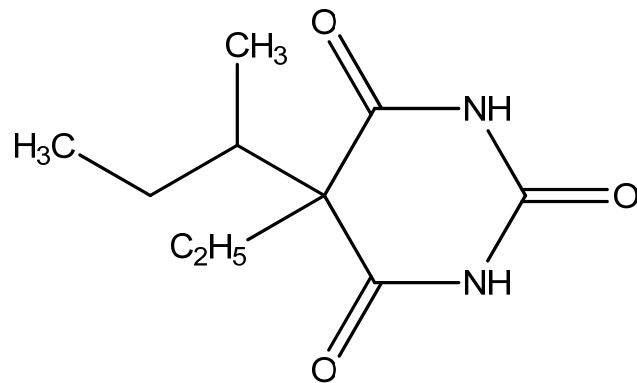
Mephobarbital



MOA-Similar to barbital

Uses- For the relief of anxiety, tension, and apprehension, also used as an anticonvulsant for the treatment of epilepsy.

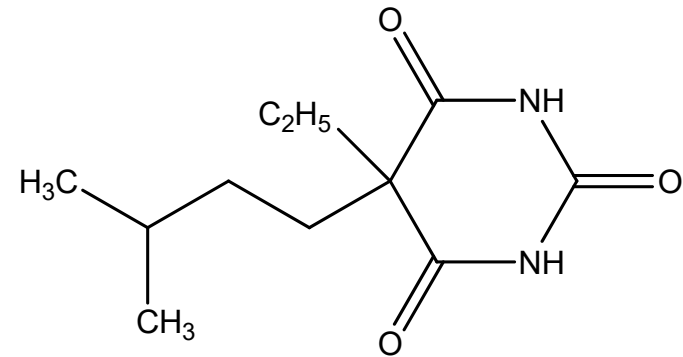
Butobarbital



MOA-Similar to barbital

Uses- For the treatment of insomnia

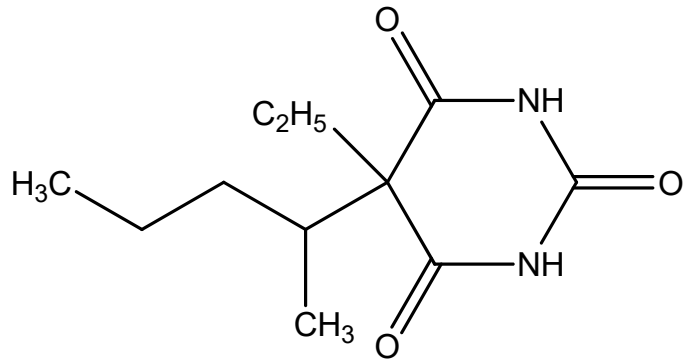
Amobarbital



MOA-Similar to barbital

Uses-It is used as a hypnotic and sedative

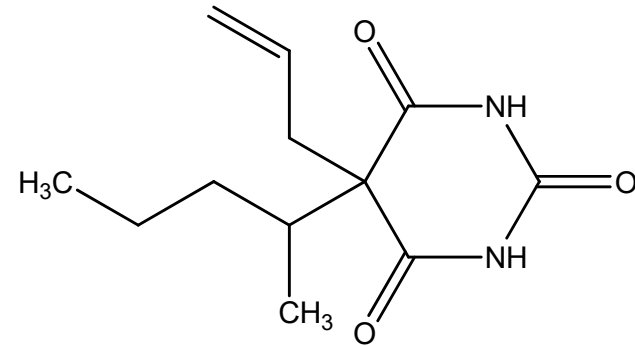
Pentobarbital



MOA-Similar to barbital

Uses- For the treatment of insomnia

Secobarbital



MOA-Similar to barbital

Uses- For the Short-term treatment of insomnia