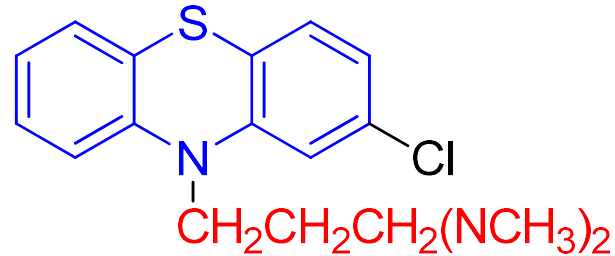


# Chlorpromazine



[3-(2-chloro-10H-phenothiazin-10-yl)propyl]dimethylamine

## MOA

Chlorpromazine acts as an antagonist on different postsynaptic dopaminergic-receptors (subtypes D1, D2, D3 and D4) to show its antipsychotic properties.

Chlorpromazine is a very effective antagonist of D2 dopamine receptors.

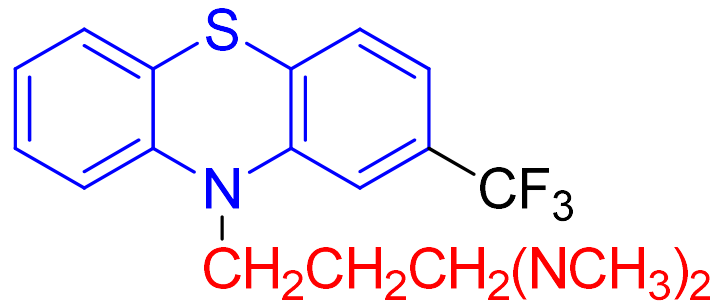
## Uses

For the treatment of schizophrenia; to control nausea and vomiting; for relief of restlessness and apprehension before surgery. To control manic-depressive illness.

## Adverse effect

Tardive dyskinesia (involuntary, repetitive body movements) and akathisia

# Triflupromazine

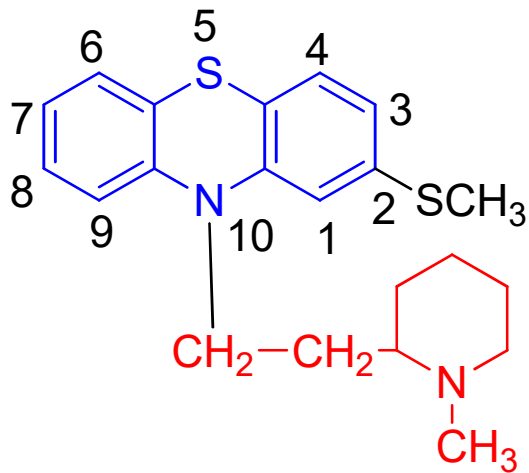


dimethyl({3-[2-(trifluoromethyl)-10H-phenothiazin-10-yl]propyl})amine

**MOA** Similar to chlorpromazine

**Uses** Used mainly in the management of psychoses. Also used to control nausea and vomiting.

# Thioridazine



10-[2-(1-methylpiperidin-2-yl)ethyl]-2-(methylsulfanyl)-10H-phenothiazine

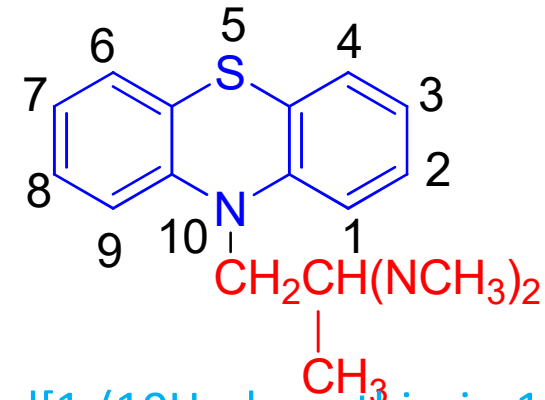
## MOA

Similar to chlorpromazine

## Uses

For the treatment of schizophrenia and generalized anxiety disorder.

# Promethazine



dimethyl[1-(10H-phenothiazin-10-yl)propan-2-yl]amine

**MOA:** Promethazine is an antagonist of histamine H<sub>1</sub> receptor, post-synaptic dopamine receptor (D<sub>2</sub>), muscarinic, and NMDA receptors.

**Uses:** used to treat allergic reactions (Rhinitis, allergic conjunctivitis, urticaria).