



**Centurion**  
**UNIVERSITY**

*Shaping Lives...  
Empowering Communities!*

PRESENTATION ON

# PROCESSING OF EXPLOSION SCENE OF CRIME

CUFS 2416 EXPLOSIVE AND POST BLAST INVESTIGATION

---

B.SC. FORENSIC SCIENCE (SEM 6)

SCHOOL OF FORENSIC SCIENCES  
BHUBANESHWAR CAMPUS

# CONTENT

---

- Introduction- scene of explosion
- Processing of the scene
  - Live explosive and IEDs handling
  - Evidentiary clues
  - Types of evidence
  - Processing also includes

# EXPLOSION SCENE (INTRODUCTION)

---

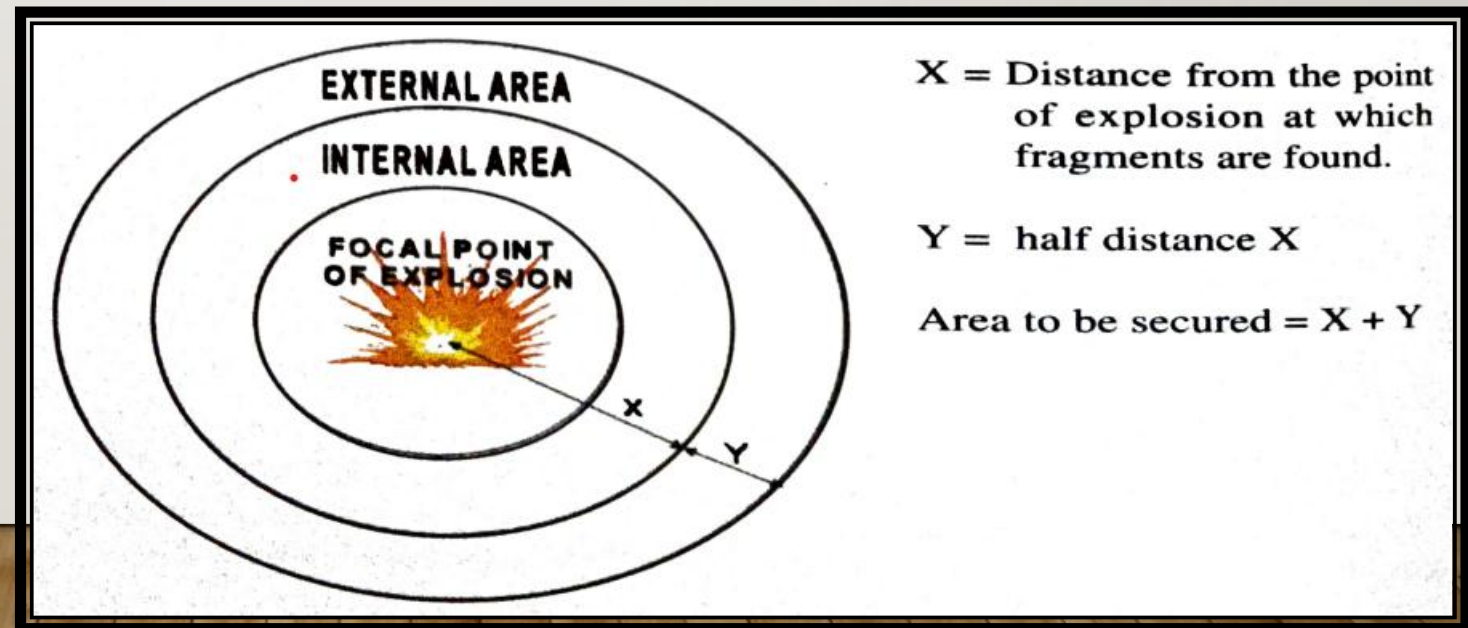
- Most important source of evidence
- Indicates power and nature of the explosive
- It has evidentiary clues
- Linkage to the perpetrator.
- Explosion scene is dangerous



# PROCESSING THE SCENE

---

- Save life and reduce trauma
- Protect the scene
- Demarcate the scene
- Divide the scene in zones
- Assess the scene
  - Special Investigating Team
  - Equipment needed



## Special Investigating Team

- Police officer
- An explosive expert
- A forensic expert
- A sniffer dog team
- An imaging expert etc.



## Equipment Used

- Bomb carrier
- Truck carrier or cranes
- Bomb suppression blanket
- Explosive detectors, including sniffer dog.
- Metal detectors etc.



**Portable X-Ray Scanner**

# LIVE EXPLOSIVE AND IED- HANDLING

---

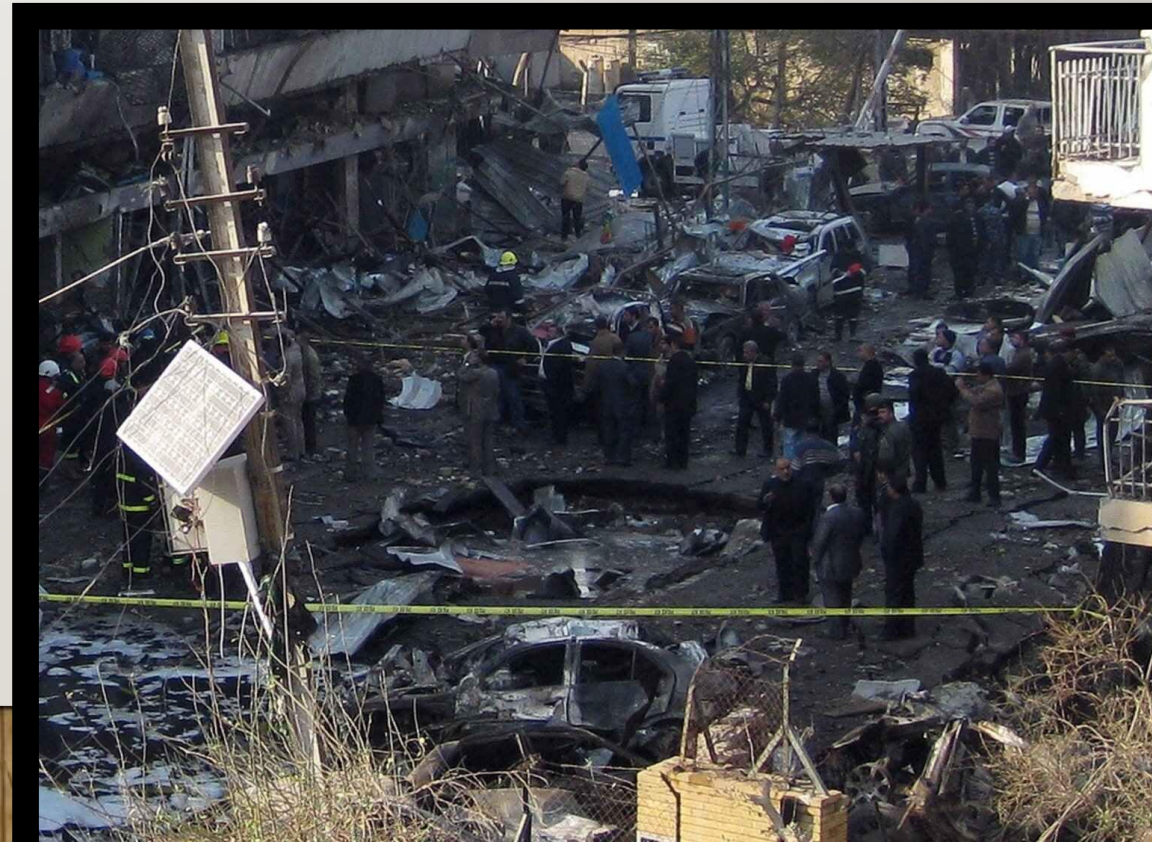
- 1<sup>st</sup> – Evacuate the premises
- Bomb disposal squad
- Documentation- photography, videography, sketches and description.
- Nature of the explosive, its location, size and the calculated hazard involved determine the mode of disposal.



# EVIDENTIARY CLUES:

---

- The seat of explosion(crater formation)
- Shattered pieces
- Explosive wave pattern(depends on the nature explosive device)
- Shattering pattern(intensity and direction)



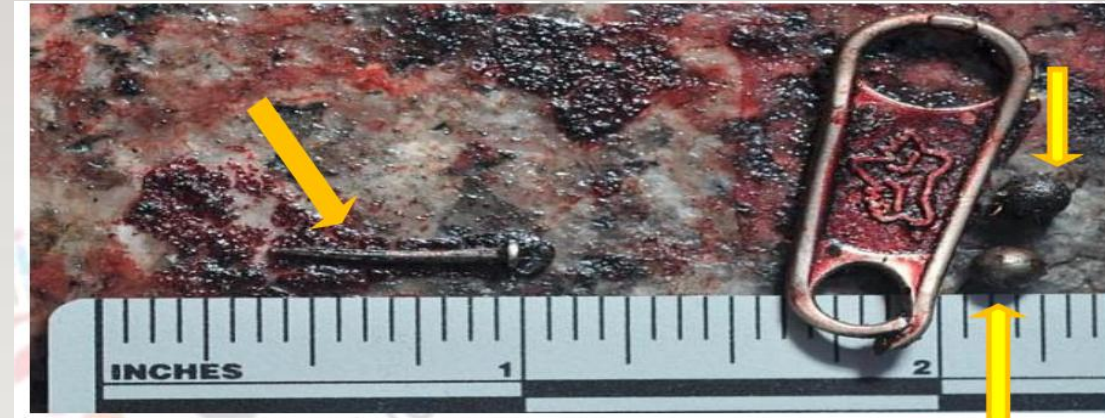
# EVIDENCES FOUND



Soot marks and its deposition



Hair evidence



Ball Bearing, Iron Nails



Pipes, in case of pipe bombs



Blood

## **OTHER EVIDENCES:**

- Residue of exploded / neutralized IED.
- Casualties (dead injured) at site/ hospital.
- Onsite explosion effects.(Focal point of explosion i.e. shape and depth of crater).
- Paint , paper wrappings, pieces of camouflage container etc.
- Parts of firing mechanism (pieces of time device, battery, pieces of wires, safety fuse, detonator etc.)
- Foot marks, hand marks, fingerprints, tire marks, tool marks and shoes prints etc.



# PROCESSING OF EXPLOSIVE SCENE ALSO INCLUDES

---

- Documentation(entry and exit log, chain of custody)
- Collection of Samples
- Marking and Packing of samples



**THANK YOU.**

---

